



NEAR EAST UNIVERSITY
Department Of Computer Engineering

Com 400 Graduation Project

HOSPITAL AUTOMATION

Using Visual Basic

Submitted To : Mr. Ümit ILHAN
Submitted From: Gökhan KOÇ - 991197

NICOSIA - 2004



TABLE OF CONTENTS

ACKNOWLEDGEMENT	I
ABSTRACT	II
INTRODUCTION	III
1. VISUAL BASIC DISCRPTION	3
2. HISTORY OF VISUAL BASIC	5
3. DATABASE MANAGEMENT SYSTEM	7
3.1. Information About DBMS	7
3.2. Data Models	8
3.3. SQL	10
3.4. The Basic Structure of SQL	12
4. MAIN MENU	13
5. PASSWORD MENU	14
6. RECORD MENU	15
7. SEARCH MENU	16
8. INFORMATION MENU	17
9. INSURANCE MENU	19
10. DEPARTMENT MENU	20
11. REPORT MENU	21
12. DOCTORS MENU	22
13. ABOUT HOSPITAL AND PASSWORD MENU	23

14. MODULES	24
14.1. Module to Connect Database	24
14.2. Module of Globals	24
15. REFERENCES	25
17. APPENDICES	26
17. 1. Codes of the Program	26

ACKNOWLEDGEMENT

Firstly I would like to thank my dear parents who helped me until this moment.

Secondly I would like to thank all my instructor and all my friends.

Thirdly I want to thank all my friends who helped for this project

Expecially I want to thank my supervisor who is Mr.Ümit İLHAN for her infinite helpness while I was prepearing this project and her kinds.

Finally I want to thank the light of life inside me.

ABSTRACT

As the information age has effected every aspect of our life, the need for computerizing many information systems has raised.

Once of the important branches that are effected by information revolution is the computer programming languages.

Project is written using Visual Basic 6.0 programming language and used Microsoft Access Database language for databases. Visual Basic is one of the best and easy programming languages.

Aim of this project is to control hospital records deal with patients. That is, This project is pursuing an aim of hospital program, that covers services needed in most hospital, such as depatments, doctors, clinic informations, treatments applied or recipes used and reports.

Before coming to this point, this project has gone through some important steps;

- First one was that I had to have some knowleges about how hospital records to make and learn hospital record working systems for the requirement definitions. So, I examined some hospital programs and met people I know who working in hospital .
- Second step was to design and to put in order informations about the program.
- The later steps were steps of the implementation of the designed information on computer by using Visual Basic Language.

INTRODUCTION

Visual Basic is a Microsoft Windows programming Language. Visual Basic programs are created in an Integrated Development Environment (IDE) . The IDE allows the programmer to create , run and debug Visual Basic programs conveniently. IDEs allow a programmer to create working programs in a fraction of the time that it would normally take to code programs without using IDEs. The process of rapidly creating an application is typically referred to as Rapid Application Development(RAD). Visual Basic is the world's most widely used RAD language.

Visual Basic is derived from the BASIC programming language. Visual Basic is a distinctly different language providing powerful features such as graphical user interfaces, even handling, access to the Win32 API, object-oriented features, error handling, structured programming, and much more.

The Visual Basic IDE allows Windows programs to be created without the need for the programmer to be a Windows programming expert.

Microsoft provides several version of Visual Basic, namely the Learning Edition , the Professional Edition and the Enterprise Edition. The Learning Edition provides fundamental programming capabilities than the Learning Edition and is the choice of many programmers to write Visual Basic applications. The Enterprise Edition is used for developing large-scale computing systems that meet the needs of substantial organizations.

Visual Basic is an interpreted language. However , the professional and Enterprise Edition allows Visual Basic code to be compiled to native code.

Visual Basic evolved from BASIC(Beginner's All purpose Symbolic Instruction Code). Basic was developed in the mid 1960's by Professors John Kemeny and Thomas Kurtz of Dartmouth College as a language for writing simple programs. BASIC's primary purpose was to help people learn how to program.

The widespread use of BASIC with various types of computers (sometimes called hardware platforms) led to many enhancements to the language. With the development of the Microsoft windows graphical user interface (GUI) in the late 1980s and the early 1990s, the natural evolution of BASIC was Visual Basic, which was created by Microsoft Corporation in 1991.

Until Visual Basic appeared, developing Microsoft Windows-based applications was a difficult and cumbersome process. Visual Basic greatly simplifies Windows application development. Since 1991 six versions have been released, with the latest- Visual Basic 6-appearing in september 1998.

After a brief explanation about the Visual Basic 6.0 and the developing layers, I hope that you will find the necessary information that you need all about the Visual Basic even if you are a text based programmer.

1. VISUAL BASIC DISCRPTION

Today's most popular operating system for PC's is Widows 98, and also it's an environment that most of the software in the world needs an environment of Windows 98 in order to operate or run. Nearly it became an international standard to make the programs, software to be able to run on Windows 98. So from these points we did a software package that should run on Windows 98. In order to make the programs to run in Windows 98 needs an interface program, which is MS Visual Basic 6.0, which is the most popular Visual Programming language in world for making programs for Windows 98 environment.

Visual Basic is Windows development language, that's why you must be familiar with the Windows environment. The "Visual" part of the "Visual Basic" refers to the method used to create the graphical user interface (GUI). Rather than writing numerous lines of code to describe the appearance and location of interface elements, you simply drag and drop rebuilt objects into place on screen. If you've ever used a drawing program such as Paint, you already have most of the skills necessary to create an effective user interface.

The "Basic" part refers to the BASIC (Beginners Ail-Purpose Symbolic Instruction Code) language, a language used by more programmers than any other language in the history of computing. Visual Basic has evolved from the original BASIC language and now contains several hundred statements, functions, and keywords, many of which relate directly to the Windows GUI. Beginners can create useful applications by learning just a few of the keywords, yet the power of the language allows professionals to accomplish anything that can be accomplished using any other Windows programming language.

Events and messages:

An event is an action recognized by a form or control. Events can occur through user action (response) such as a mouse click or a key press using objects of window (through programmatic control), or even as a result of another windows action.

Event-Driven applications execute Basic code in response to an event. Each form and control

in VB has a predefined set of events. If one of these events occurs and there is a user code in the associated event procedure, VB invokes that code. For example most object recognize a Click event. If user clicks a form (object), code in the form's Click event procedure is executed. Each time an event occurs, it causes a message to be sent to the operating system. The system processes the message and broadcast it to the other windows. Each window can take the appropriate action based on its own instructions from dealing with that particular message.

Fortunately, Visual Basic insulates you from having to deal with all of the low-level message handling. Many of the messages are handled automatically by VB. This allows you to quickly create powerful application without having to deal with necessary details.

Programs in conventional programming languages run from the top down. For older programming languages, execution starts from the first line and moves with the flow of the program to different parts as needed.

Visual Basic program usually works completely different. The code doesn't follow a predefined path. It executes different code section in response to events. The core of a Visual Basic programs is a set of independent pieces of code that are activated by, and so respond to, only the event they have been told to recognize.

The programming code in VB that tells your program how to respond to events (event procedure) .An event procedure is a body of code that is only executed in response to an external event.

Your code can also trigger events during execution. It is for this reason that is important to understand the event-driven model and keep it mind when designing VB applications.

The fastest and easiest way to create applications for Microsoft Windows Whether you are an experienced professional or brand new to Windows programming, Visual Basic provides you with a complete set of tools to simplify rapid application development.

2. History of Visual Basic

VB was introduced in 1991 as Version 1.0

- Very simple controls (controls nuts and bolts of your project, we use controls to get user input and to display output)
 - Text box controls
 - List box controls
 - Combo box controls and a few
- No DBMS features
- Only sequential and random files

VB Version 2.0

- Increased controls
- Feature of DBMS
- Paradox (only level of module)

VB Version 3.0

- More powerful DBMS features
- No need standard module of DBMS
- Data controls are used
- OLE 1.0(Object linking and embedding) feature

VB Version 4.0

- Ability to generate 32-bit applications for both windows95 & Windows NT
- Use OLE technology of Microsoft
- Use some of the techniques of OOP and class modules are introduced
- The ability to extend the VB programming environment. Create or use third party tools into the VB environment
- Conditional compilation to allow you to do multi platform development more easily

VB Version 5.0

- Compilation of native code, p-code
- Create it's own Active-X controls
- Multiple projects
- Design and application for Internet and Intranet environment with Active-X documents
- New function of code editor
- Downloadable Internet controls
- Visual Models
- Object base data storage- repository
- Has dynamic Linked Library (DDL), to combine VB with another programming languages such as C
- You could also create your own OLE controls in C and use them in VB

VB Version 6.0

- Native Code Compiler
Create applications, and both client and server-side components that are optimized for throughput by the world-class Visual C++ 6.0 optimized native-code compiler
- ADO (ActiveX Data Objects)
Visual Basic 6.0 introduces ADO as the powerful new standard for data access, Included OLE DB drivers include SQL server 6.5+, Oracle 7.3.3+, Microsoft Access, ODBC, and SNA server
- Integrated Professional Visual Database Tools
Visual Basic 6.0 provides a complete set of tools for integrating databases with any application.
- Automatic data binding
- Data environment designer
- Data Report designer
- Visual Basic Web Class Designer
- Dynamic HTML Page Designer

3.Database Management System

3.1. Information About DBMS

Databases Management System (DBMS) consists of a collection of interrelated data and collection of programs to access that data. The data contains information about one particular enterprise. The primary goal of a DBMS is to provide an environment, which is both convenient and efficient to use in retrieving and storing information.

Database systems are designed to manage large bodies of information. The management of data involves both the definition of structures for the manipulating of information. In addition the database system crashes or attempts at authorized access. If data is to be shared among several users, the system must avoid possible anomalous results.

A major purpose of a database system is to provide users with an abstract view of the data. That is the system hides certain details of how the data is stored and maintained. This is accomplished by defining three levels of abstraction.

- The Physical Level
- The Conceptual Level
- The view Level

Underlying the structure of a database is the data model, collection of conceptual tools for describing data, data relationships, data semantics, and data constraints. The various data models that have been proposed, is divided into three different groups:

- 1 - Object- Based Logical Model
- 2- Record Based Logical Model
- 3- Physical Data Models

Database change over time as information is inserted and deleted. The Collection of information stored in the database at a particular moment in time is called an instance of the database. The overall design of the database is called the database scheme. The ability to modify scheme definition in one level without affecting scheme definition in the next-higher level is called data independence. There are two levels of data dependencies,

1- Physical Data independencies

2- Logical Data independencies

A database scheme is specified by a set of definitions, which are expressed by a data definition language (DDL). DDL statements are compiled into a set of tables, which are stored in special file called the data dictionary, which contains metadata. A data manipulating language (DML) is a language that enables users to access or manipulate data. There are basically two *types*: procedural DML's which require a user to specify what data is needed and how to get it and nonprocedural DML's which require a user to specify what data is needed without specifying how to get it

3.2. Data Models

Underlying the structure of a database is the concept of data model, a collection of conceptual tools for describing data, data relationships, data semantics, and consistency constraints. The various data models that have been proposed fall into three different groups: object-based logical models, record-based logical models, and physical data models.

Object-Based Logical Models:

Object-based logical models are used in describing data at the conceptual and view levels. They are characterized by the fact that they provide fairly flexible structuring capabilities and allow data constraints to be specified explicitly. There are many different models, and more likely to come. Some of the more widely known ones are:

- The entity-relationship model.
- The object-oriented model.
- The binary model.
- The semantic data model.
- The functional data model.

The Entity-Relationship Model:

The entity-relationship (E-R) data model is based on a perception of a real world, which consists of a collection of basic objects called entities, and relationships among these objects. An entity is an object that is distinguishable from other objects by a specific set of attributes. For example, the attributes number and balance describe one particular account in a bank. A relationship is an association among several entities. For example, a CustAcct relationship associates a customer with each account that she or he has. The set of all entities of the same type and relationships of the same type are termed an entity set and relationship set, respectively.

In addition to entities and relationships, the E-R model represents certain constraints to which the contents of a database must conform. One important constraint is mapping cardinalities, which express the number of entities to which another entity can be associated via a relationship set.

The overall logical structure of a database can be expressed graphically by an E-R diagram, which consists of the following components:

- Rectangles, which represent entity sets.
- Ellipses, which represent attributes
- Diamonds, which represent relationship among entity sets.
- Lines, which link attributes to entity sets and entity sets to relationships.

Each component is labeled with the entity or relationship it represents.

To illustrate, consider part of a database banking system consisting of customers and the accounts that they have.

From a historical Perspective, the relational data model is relatively new. The first database systems are based on either the network model or the hierarchical model. Those two older models are tied more closely to the underlying implementation of the database than is the relational model. The relational model has established itself as the primary data model of the commercial data processing in systems for computer-aided design and other environments.

Relational Algebra:

The relational algebra is a procedural query language. It consists of a set of operations that take one or two relations as input and produce a new relation as their result. The fundamental operations in the relational algebra are select, project, Cartesian product, rename, union, and set difference. In addition to fundamental operations, there are several other operations, namely, set intersection, natural join, division and assignment.

3.3. SQL

SQL means "Structured Query Language". There are numerous version of SQL. The original version was developed at IBM's San Jose Research Laboratory. This language originally called Sequel, was implemented as part of the system R Project in early 1970's, the Sequel language has evolved since then, and its name change to SQL. Although the product version of SQL differs in several language details, the differences are for the most part, minor. The SQL language has several a parts.

Data Definition Language (DDL):

The SQL DDL provides commands for defining relations schemes, deleting relations, creating indices and modifying relations.

A database scheme is specified by a set of definitions, which are expressed by a special language called a data definition language (DDL). The result of compilation of DDL statements is a set of tables, which are stored in a special file called data dictionary (or directory).

A data directory is a file that contains metadata; that is, "data about data." This file is consulted before actual data is read or modified in the database system.

The storage structure and access methods used by the database system are specified by a set of definitions in a special type of DDL called a data storage and definition language. The result of compilation of these definitions is a set of instructions to specify the implementation details of the database schemes that are usually hidden from the users.

Interactive data manipulating language (DML):

The SQL DML includes a query language based on both the relational algebra and the tuple relational calculus. It includes also commands to insert, delete, and modify tuples in the database.

By data manipulation we mean:

- The retrieval of information stored in the database.
- The insertion of new information into the database.
- The deletion of information from the database.
- The modification of data stored in the database.

At the physical level, we must define algorithm that allow for efficient access to data. At higher levels of abstraction, an example is placed on ease of use. The goal is to provide for efficient human interaction with the system.

A data manipulation language (DML) is language that enables users to access or manipulate data as organized by the appropriate data model. There are basically two types:

- Procedural DMLs require a user to specify what data is needed and how to get it.
- Nonprocedural DMLs require a user to specify what data is needed without specifying how to get it.

Nonprocedural DMLs are usually easier to learn and use than procedural DMLs. However, since a user does not have to specify how to get the data, these languages may generate code which is not as efficient as that produced by procedural languages.

A query is a statement requesting the retrieval of information. The portion of a DML that involves information retrieval called a query language. Although technically incorrect, it is common practice to use the terms query language and data manipulation language synonymously.

3.4. The Basic Structure of SQL

The basic structure of SQL Expression consists of 3 clauses: Select, From and Where.

- ** The SELECT clause corresponds to the projection operation of the relational algebra. It used to list the attributes desired in the result of a query.
- ** The FROM clause corresponds to the Cartesian product operation of the relation algebra. It lists the relation to be scanned in the evaluation of the expression.
- ** The WHERE clause corresponds to the selection predicate of the relational algebra. It consists of a predicate involving attributes of the relations that appear in the from clause.

The different meaning of the "SELECT" in SQL and in the relational algebra is an unfortunate historical fact. We emphasize the different interpretation here to minimize potential confusion. A typical SQL query has the form:

SELECT A1, A2 ... An FROM r1, r2, m WHERE P

NOTE: A_i represents attribute and each r_i a relation . P is a predicate.

4.Main Menu

This menu is main form which is appearing on the monitor during program running and includes sub menus as record , search ,insurance etc. on its top. On the main menu , we reach sub forms by using these sub menus.

When program is started, mission of main menu is to make “VeriTabanıAç or VeritabanıKapat” functions in module1 to run for providing or removing connecting between program and database .Appreance of the Main menu is following down.



5. Password Menu

When program is run ,firstly, the password menu will appear on the main menu. When right password is entered in this form ,main menu will have been prepared to be used. If password is entered wrong three times then the program will shut down itself. Form Appearance of this password form is following down.



6. Record Menu

This menu is the record menu of the program. We can record new patient informations by using this menu. In the menu, information about patients as name, surname, birthdate, blood type, age, job, home and home telephone etc. is entered and this menu includes a section to give information about insurance of patients. When click on this section, insurance form appears in order to select insurance existing in records. The Record menu is following. This menu was named as kayitformu in codes of the program.

The screenshot displays the 'RECORD' menu of the 'HOSPITAL AUTOMATION' program. The window has a title bar with 'HOSPITAL AUTOMATION' and a menu bar with 'MAIN MENU', 'SERVICES', 'DOCTOR'S REPORT', and 'ABOUT HOSPITAL'. On the left side of the window, there is a vertical menu with 'RECORD F1' and 'SEARCH F2'. The main area of the window is titled 'RECORD' and contains a form for entering patient information. The form is divided into two main sections: 'PATIENT INFORMATION' on the left and 'INSURANCE INFORMATION' on the right. The 'PATIENT INFORMATION' section includes fields for NAME, SURNAME, BIRTHDATE, BLOOD TYPE, AGE, SEX, and HOME ADDRESS. The 'INSURANCE INFORMATION' section includes fields for INSURANCE TYPE, INSURANCE NUMBER, and INSURANCE PRICE. There are also buttons for 'SAVE' and 'NEW RECORD'. The status bar at the bottom of the window shows the date '27.12.2003' and the time '22:37:20'.

7.Search Menu

This menu is search menu of the program. This form is used to see all patients or ones that are searched by using register no, name, surname, date interval sections in hospital. when double click to sections belong to patients in this menu, we can pass to form that includes detail informations of identity, clinic and history of patient. Listbox on the form was used to see easier names of patients. This form was named as aramaformu in codes of the program. Appearance of this search menu is following down.

The screenshot shows a software window titled "HOSPITAL AUTOMATION" with a menu bar containing "MAIN MENU", "SERVICES", "DOCTOR'S REPORT", and "ABOUT HOSPITAL". Below the menu bar, there are two buttons: "RECORD F1" and "SEARCH F2". The "SEARCH F2" button is highlighted. A "SEARCH" dialog box is open in the center. It has a title bar "SEARCH" and a close button. Inside the dialog, there are several input fields and a listbox. The input fields are labeled "REGISTER NO", "NAME", "SURNAME", "AND RAD", "INITIALS", "F1000", "F1001", "F1002", and "F1003". There are also two date pickers labeled "27.12.2003" and "27.12.2003". The listbox on the right contains a table with columns "REGISTER NO", "NAME", and "SURNAME". The table has one row with the values "13", "ASD", and "RAD".

REGISTER NO	NAME	SURNAME
13	ASD	RAD

At the bottom left of the main window, the date and time "27.12.2003 22:37:20" are displayed. At the bottom center, the text "HOSPITAL AUTOMATION" is shown.

8. Information Menu

This form is the information menu of the program. The menu includes three sections that show detail information of identity, clinic and history that belong to patients.

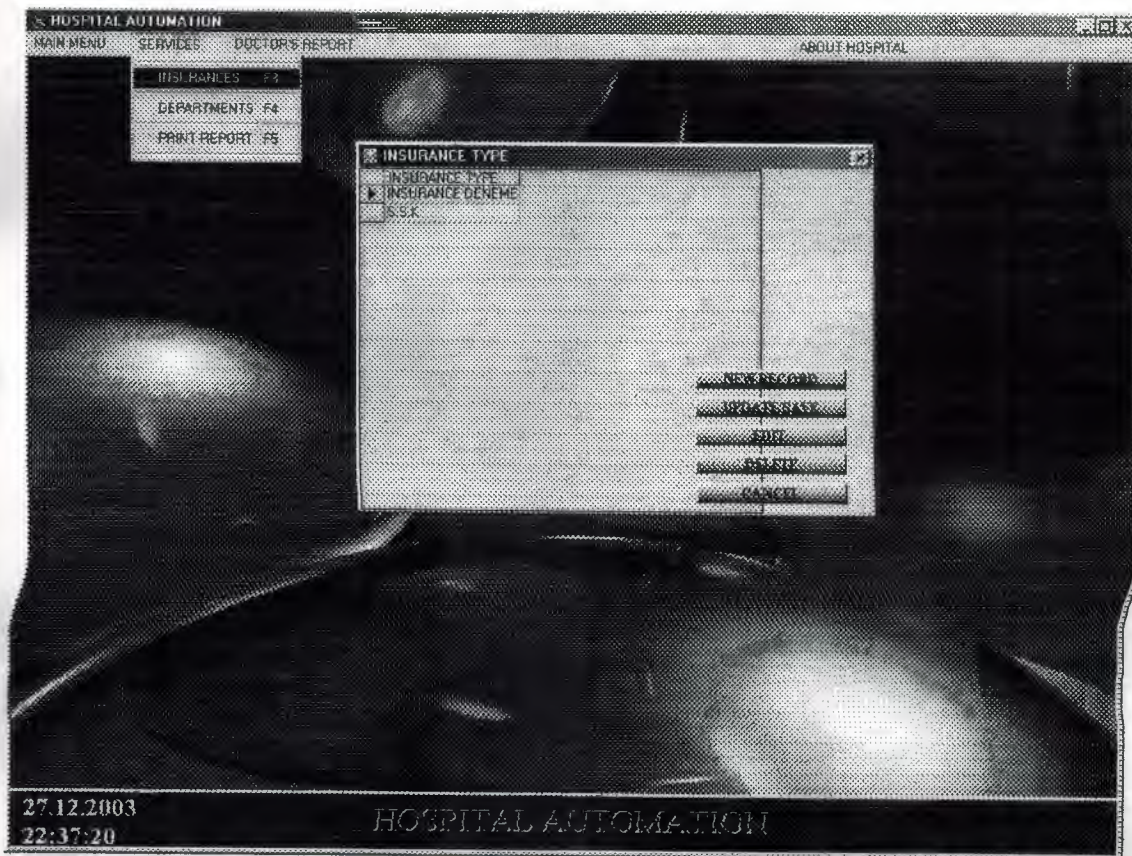
First section is identity section. In this identity section, patient's detail information of identity are shown and these information is able to be changed by using update button.

Second one is clinic section. In clinic section, patient's detail clinic information are shown. These information is able to be changed or deleted by using update or delete buttons. Or new information about patient is saved by using save button. Also by using first, previous, next and last buttons, records of patient can be seen one by one. When click to recipe button in this section, frame deal with recipes is appearing to be selected recipes for patient.

Third one is history section. In history section, patients' information until last coming date to hospital is shown. And when click date that is wanted to learn information at that date information at selected date will be written to clinic section. Appearance of this menu is in next page. This form was named as bilgi formu in codes of the program.

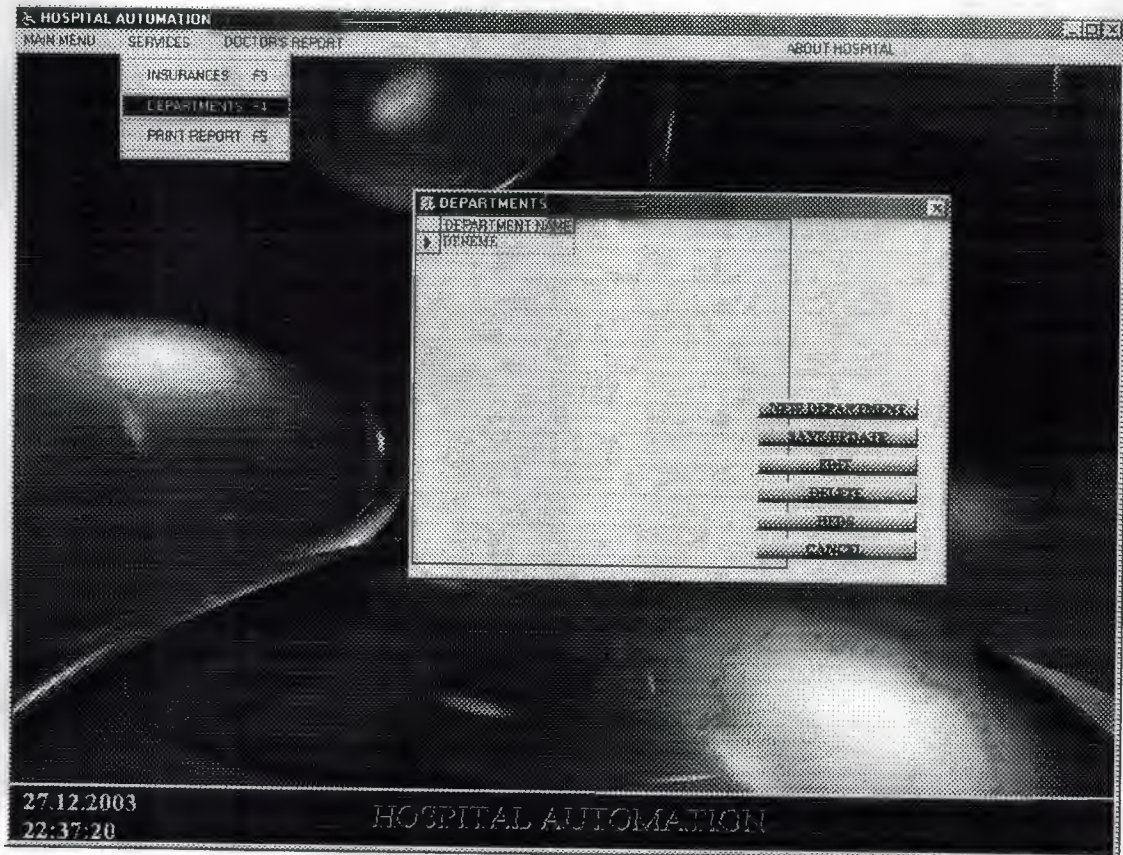
9. Insurance Menu

This form is insurance menu of the program. In this menu, new insurance records is made, insurance name can be changed or deleted. This menu includes edit and new insurance type frames that is appearing by using edit and new record buttons. When necessary, insurance name is assigned to insurance section in record menu from this menu. Appearance of this form, it was named sigortaformu in codes of the program.



10.Department Menu

This form is department menu of the program. This menu shows department names and bed numbers of departments. Also this menu is used to record new departments and new beds to departments, to change or to remove departments. This form includes edit, new department name and beds frames that is appearing by using edit, new department, and beds buttons. Apperance of this menu is following down. Menu was named as bölümformu in codes of the program.



11. Report Menu

This form is report menu of the program. It used to be able to report informations of patients existing in records, to prepare new reports ,to save or to print this informations. Appearance of this form is following down. This menu was named as raporformu in codes of the program.

HOSPITAL AUTOMATION

MAIN MENU SERVICES DOCTORS REPORT ABOUT HOSPITAL

INSURANCES F3
DEPARTMENTS F4
PRINT REPORT F5

REPORT PRINT

REPORT NAME

REPORTS

IDOCTOR NAME:
IPROF GOKHAN KOC

IDIAGNOSIS
Idfgdsfgdsg

IMEDICAL TREATMENT:
Idfgdsfgdsg

IRECIPES
Idgdfsgdsg

27.12.2003
22:37:20

VERSION 1.0

12.Doctors Menu

This form is doctors menu of the program. Menu is used to save new doctor record, to change or to delete doctor informations. this form includes edit, new record frames and these frames is reached by using new record and edit buttons. Also in order to see patients that doctors are interested in, interested doctor section can be click. Appearance is following. Menu was named as doctorlarformu in codes of the program.

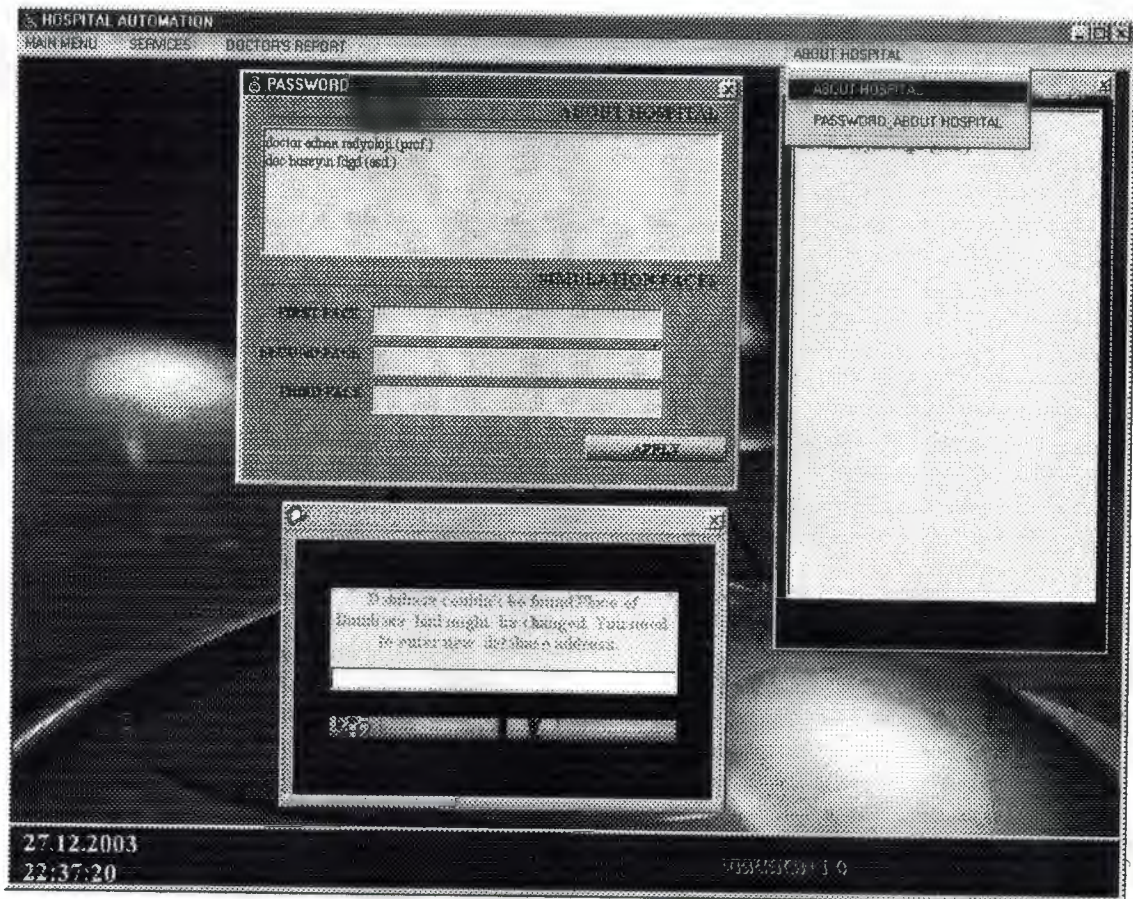
DOCTOR TITLE	DOCTOR NAME SURNAME	DOCTOR DEPARTMENT	DOCTOR NO
PROF	GOKHAN KOC	RADIOLOG	1
DOC	HUSNU	SFS	2

NEW RECORD
SAVE/DELETE
EDIT
RESET
CANCEL

27.12.2003
22:37:20
VER.SICOT 1.0

13. About Hospital And Password Menus

About Hospital menu is visible in right side of main menu and this menu shows us summarize informations about hospital, that can be showed by using About Hospital frame in Password menu. Password menu is used to change administrator password that is used to enter into program and informations that is shown in About Hospital menu and in simulation faces about hospital. Also password form can be used to assign new place for database by administrator. Appearance of these menus is following down. Password menu was named as şifrehakkındaformu, About Hospital menu was named as hakkındaformu in codes of the program.



14.Modules

In the program, Modules include codes that will be usually used to connect database and global values usually be used in the program.

14.1. Module to connect database

This module applies connecting between database and program and this modul was named as Veritabaniac in codes of the program.

14.2. Module of globals

This module includes globals that will be used in many place of program. This module was named as globaller in codes of the program.

15. References

- Ihsan Karagülle ; Zeydin Pala (1999). Microsoft Visual Basic 6.0 Pro. Istanbul. Türkmen Press.
- Visual Basic 6.0 How To Program H. M. Deitel, P. J. Deitel, T. R. Nieto 1999 Prentice-Hall, Inc
- Introduction to Oracle: SQL and PL/SQL Neena Kochhar, Ellen Gravina, Priya Nathan July 1999-Jerry Brosnan
- Database System Peter Roob 993-Wads Worth Publishing
- Visual Basic Lecture Note: Ümit İlhan 2003-2004

16. Appendices

All codes in this project are in this section.

16.1 Codes of the program

In this section of codes, also there are titles which separate codes from other codes.

Codes of Main Menu

```
Private Sub MDIForm_Load()  
    Label1 = Date  
    Timer3.Enabled = False  
    Timer2.Enabled = True  
    Timer2.Interval = 1000  
    Label1.Left = 150  
    Label2.Left = 150  
    MDIForm1.Top = 0  
    MDIForm1.Left = 0  
    MDIForm1.Height = Screen.Height  
    MDIForm1.Width = Screen.Width  
    Rotater1.Width = Screen.Width / 2  
    Rotater1.Left = (Screen.Width - Rotater1.Width) / 2  
    DataBaseYer = GetSetting("hospital", "database", "databaseyer")  
    If DataBaseYer = "" Then  
        SaveSetting "hospital", "database", "databaseyer", "C:\SONPROJE\Hospital.mdb"  
        DataBaseYer = GetSetting("hospital", "database", "databaseyer")  
    End If  
    If VeriTabanıAç = True Then  
        hastaneaç "select * from HASTANEHAKKINDA"  
  
        If hastane.RecordCount > 0 Then  
            Form8.RichTextBox1.Text = hastane("ABOUTHOSPITAL")  
            Rotater1.Faces(0).Caption = hastane("FIRSTFACE")  
            MDIForm1.Caption = hastane("FIRSTFACE")  
            Rotater1.Faces(1).Caption = hastane("SECONDFACE")  
            Rotater1.Faces(2).Caption = hastane("THIRDFACE")  
        End If  
        Form8.Visible = False  
        Form11.Show  
        yerbulunamadı = 0  
    Else  
        mnabouthospital.Enabled = False  
        mndepartment.Enabled = False  
        mndoctorsreport.Enabled = False  
        mninsurance.Enabled = False
```

```
mnpasswordabout.Enabled = False
mnrecord.Enabled = False
mnreports.Enabled = False
mnSEARCH.Enabled = False
Picture1.Enabled = False
Timer1.Enabled = True
Timer1.Interval = 3000
Form10.Text1 = DataBaseYer
Form10.Visible = False
yربولunamadı = 1
End If
End Sub
```

```
Private Sub MDIForm_Unload(Cancel As Integer)
    VeriTabanıKapat
    If yربولunamadı <> 1 Then
        ydekiçinyer = Dir("C:\WINDOWS", vbDirectory)
        If ydekiçinyer = "" Then
            ydekiçinyer = Dir("D:\WINDOWS", vbDirectory)
            If LCase(ydekiçinyer) = "windows" Then
                FileCopy DataBaseYer, "d:\windows\hastane.onm"
                GoTo skip
            End If
            GoTo skip
        End If
        FileCopy DataBaseYer, "c:\windows\hospital.onm"
        skip:
    Else
        End
    End If
End Sub
```

```
Private Sub mnabouthospital_Click()
    Form8.Show
End Sub
```

```
Private Sub mndepartment_Click()
    Form5.Show
End Sub
```

```
Private Sub mndoctorsreport_Click()
    Form7.Show
End Sub
```

```
Private Sub mninsurance_Click()
    Form4.Show
End Sub
```

```
Private Sub mnpasswordabout_Click()
    Form9.Show
End Sub
```

```
Private Sub mnrecord_Click()
    bulmaformu = 1
    Form3.Visible = False
    Form2.Show
    bulmaformu = 0
End Sub
```

```
Private Sub mnreports_Click()
    Form6.Show
End Sub
```

```
Private Sub mnSEARCH_Click()
    Form3.Show
    Form2.Visible = False
End Sub
```

```
Private Sub Picture1_MouseMove(Button As Integer, Shift As Integer, X As Single, Y
As Single)
    mousex = Str(X)
    mousey = Str(Y)
    x1yer = (Screen.Width - (Rotater1.Left + Rotater1.Width)) / 3
    x1yeri = Screen.Width - x1yer
    x2yer = (Screen.Width - (Rotater1.Left + Rotater1.Width)) / 4
    x2yeri = Screen.Width - x2yer
    y1yer = Picture1.Height / 3
    y2yer = Picture1.Height / 2
    If Val(mousex) < x2yeri And Val(mousex) > x1yeri And Val(mousey) < y2yer And
Val(mousey) > y1yer Then
        Form8.Show
    Else
        Form8.Visible = False
    End If
End Sub
```



```
Private Sub Timer1_Timer()
Form10.Show
Timer1.Enabled = False
End Sub
```

```
Private Sub Timer2_Timer()
Label2 = Time
End Sub
```

```
Private Sub Timer3_Timer()
Static zaman, geri As Long
If geri = 0 Then
Form11.ProgressBar1.Max = 25
Form11.ProgressBar1.Min = 0
zaman = 25
geri = 1
Form11.Show
Form11.Frame1.Visible = True
End If
If zaman = 0 Then
Timer3.Enabled = False
End
End If
zaman = zaman - 1
zamn = Str(zaman)
Form11.ProgressBar1.Value = Val(zamn)
End Sub
```

Codes of Password Menu

```
Private Sub Command1_Click()
Static hatasayısı As Integer
If Text1 = "" And Text2 = "" Then
MsgBox ("You must enter Administrator Name and Password...")
hatasayısı = hatasayısı + 1
If hatasayısı = 3 Then
MsgBox ("WRONG Password or Administrator Name has been entered 3.times" +
Chr(10) + Chr(13) + "Program will be shut down...")
End
End If
Else
şifre = "select * from PASSWORDTABLOSU order by PASSWORDNO"
If şifre.RecordCount > 0 Then
şifre.MoveFirst
administeriçin = şifre("ADMINPROPERTY")
```

```

şifre.MoveLast
If şifre("ADMINISTERNAME") = Text9 And şifre("PASSWORD") = Text10 Or
administeriçin = Text9 Then
MDIForm1.mnabouthospital.Enabled = True
MDIForm1.mndeptment.Enabled = True
MDIForm1.mndoctorsreport.Enabled = True
MDIForm1.mninsurance.Enabled = True
MDIForm1.mnpasswordabout.Enabled = True
MDIForm1.mnrecord.Enabled = True
MDIForm1.mnreports.Enabled = True
MDIForm1.mnSEARCH.Enabled = True
MDIForm1.Picture1.Enabled = True
Else
MsgBox ("WRONG Administrator Name or Password has been entered...")
hatasayısı = hatasayısı + 1
If hatasayısı = 3 Then
MsgBox ("WRONG Password or Administrator Name has been entered 3.times" +
Chr(10) + Chr(13) + "Program will be shut down...")
End
End If
End If
End If
End If
End Sub

```

```

Private Sub Form_Load()
Form11.Left = Screen.Width / 4
Form11.Top = Screen.Height / 5
MDIForm1.mnabouthospital.Enabled = False
MDIForm1.mndeptment.Enabled = False
MDIForm1.mndoctorsreport.Enabled = False
MDIForm1.mninsurance.Enabled = False
MDIForm1.mnpasswordabout.Enabled = False
MDIForm1.mnrecord.Enabled = False
MDIForm1.mnreports.Enabled = False
MDIForm1.mnSEARCH.Enabled = False
MDIForm1.Picture1.Enabled = False
Text1 = ""
Text2 = ""
Frame1.Visible = False
ProgressBar1.Min = 0
ProgressBar1.Max = 31
ProgressBar1.Value = 0
Timer1.Enabled = False
Timer2.Enabled = False
End Sub

```



```

Private Sub KDCButton5_Click()
Static hatasayısı As Integer
If Text1 = "" And Text2 = "" Then
hatasayısı = hatasayısı + 1
If hatasayısı = 3 Then
MsgBox ("WRONG Password or Administrator Name has been entered 3.times" +
Chr(10) + Chr(13) + "Program will be shut down...")
Timer2.Enabled = True
Timer2.Interval = 50
GoTo kapanısa
End If
MsgBox ("You must enter Administrator Name and Password...")
Else
şifre = "select * from PASSWORDTABLOSU order by PASSWORDNO"
If şifre.RecordCount > 0 Then
şifre.MoveFirst
administeriçin = şifre("ADMINPROPERTY")
şifre.MoveLast
If şifre("ADMINISTERNAME") = Text1 And şifre("PASSWORD") = Text2 Or
administeriçin = Text1 Then
Timer1.Enabled = True
Timer1.Interval = 100
Frame1.Visible = True
Else
hatasayısı = hatasayısı + 1
If hatasayısı = 3 Then
MsgBox ("WRONG Password or Administrator Name has been entered 3.times" +
Chr(10) + Chr(13) + "Program will be shut down...")
Timer2.Enabled = True
Timer2.Interval = 50
GoTo kapanısa
End If
MsgBox ("WRONG Administrator Name or Password has been entered...")
End If
End If
End If
kapanısa:
End Sub

```

```

Private Sub Text1_Change()
If Len(Text1) >= 9 Then
If UCase(Mid(Text1, 1, 9)) = UCase("programcı") Then
Text1.PasswordChar = "*"
End If
Else
Text1.PasswordChar = ""
End If

```

```

End Sub
Private Sub Timer1_Timer()
Static zaman As Long
If zaman = 30 Then
Frame1.Visible = False
Form11.Visible = False
MDIForm1.mnabouthospital.Enabled = True
MDIForm1.mndeptment.Enabled = True
MDIForm1.mndoctorsreport.Enabled = True
MDIForm1.mninsurance.Enabled = True
MDIForm1.mnpasswordabout.Enabled = True
MDIForm1.mnrecord.Enabled = True
MDIForm1.mnreports.Enabled = True
MDIForm1.mnSEARCH.Enabled = True
MDIForm1.Picture1.Enabled = True
Timer1.Enabled = False
End If
zaman = zaman + 1
zamn = Str(zaman)
ProgressBar1.Value = Val(zamn)
End Sub

```

```

Private Sub Timer2_Timer()
Static zaman, geri As Long
If geri = 0 Then
ProgressBar1.Max = 25
ProgressBar1.Min = 0
Label3 = "Program is shuttin down"
zaman = 25
geri = 1
Frame1.Visible = True
End If
If zaman = 0 Then
Timer2.Enabled = False
End
End If
zaman = zaman - 1
zamn = Str(zaman)
ProgressBar1.Value = Val(zamn)
End Sub

```

Codes of Record Menu

```

Private Sub Check1_Click()
If Check1.Value = 1 Then
Text11.Enabled = True

```



```

form2istek = 1
Form4.Show
Else
Text11 = ""
Text11.Enabled = False
End If
End Sub

```

```

Private Sub Form_Load()
KDCButton1.Enabled = False
Text1 = ""
Text2 = ""
Text2.Enabled = False
Text3 = ""
Text4 = ""
Text5 = ""
Text6 = ""
Text7 = ""
Text8 = Date
Text8.Enabled = False
Text9 = ""
Text10 = ""
Text11 = ""
Text11.Enabled = False
MaskedTextBox1.PromptInclude = False
MaskedTextBox1.Text = ""
MaskedTextBox2.PromptInclude = False
MaskedTextBox2.Text = ""
MaskedTextBox3.PromptInclude = False
MaskedTextBox3.Text = ""
Combo1.Text = ""
Combo2.Text = ""
Combo3.Text = ""
Combo4.Text = ""
Check1.Value = 0
Form2.Top = 15
Form2.Left = 15
End Sub

```

```

Private Sub KDCButton1_Click()
If Text2.Text <> "" And Text3.Text <> "" And Text4.Text <> "" And Text5.Text <> ""
And Text9.Text <> "" And MaskedTextBox3.Text <> "" And Combo1.Text <> "" And
Combo2.Text <> "" And Combo3.Text <> "" Then
cevap = vbYes
KayıtAç "SELECT * FROM KAYITTABLOSU WHERE NAME=" +
UCase(Trim(Text3)) + " AND SURNAME=" + UCCase(Trim(Text4)) + " AND
[REGISTER NO]=" + Trim(Text2) + ""

```

```

If kayit.RecordCount > 0 Then
KayıtAç "SELECT * FROM KAYITTABLOSU WHERE NAME=" +
UCase(Trim(Text3)) + " AND SURNAME=" + UCase(Trim(Text4)) + " AND
[REGISTER NO]=" + Trim(Text2) + " AND NEWCOMING=" + Trim(Mid(Text8, 1,
2)) + "." + Trim(Mid(Text8, 4, 2)) + "." + Trim(Mid(Text8, 7, 4)) + ""
If kayit.RecordCount > 0 Then
cevap = MsgBox("just there is such a record,would you like saved again? ", vbYesNo +
vbApplicationModal, "WARNING")
End If
If cevap = vbYes Then
kayit("NEWCOMING") = Text8
kayit("REGISTER NO") = Trim(Text2)
kayit("MARITALSTATUS") = UCase(Trim(Combo3.Text))
kayit("AGE") = Val(Text5)
kayit("HOME ADDRESS") = UCase(Trim(Text9))
kayit("JOB ADDRESS") = UCase(Trim(Text10))
kayit("HOME PHONE") = MaskedTextBox3.FormattedText
kayit("JOB PHONE") = MaskedTextBox2.FormattedText
kayit("INSURANCE TYPE") = UCase(Trim(Text11))
kayit.Update
End If
Else
On Error GoTo MESAJ
KayıtAç "SELECT * FROM KAYITTABLOSU"
kayit.AddNew
kayit("NEWCOMING") = Text8
kayit("REGISTER NO") = Trim(Text2)
kayit("NAME") = UCase(Trim(Text3))
kayit("SURNAME") = UCase(Trim(Text4))
kayit("BIRTHDATE") = MaskedTextBox1.Text
kayit("JOB") = UCase(Trim(Combo1.Text))
kayit("SEX") = UCase(Trim(Combo2.Text))
kayit("MARITALSTATUS") = UCase(Trim(Combo3.Text))
kayit("BLOOD TYPE") = UCase(Trim(Combo4.Text))
kayit("AGE") = Val(Text5)
kayit("FATHERNAME") = UCase(Trim(Text6))
kayit("MOTHERNAME") = UCase(Trim(Text7))
kayit("HOME ADDRESS") = UCase(Trim(Text9))
kayit("JOB ADDRESS") = UCase(Trim(Text10))
kayit("HOME PHONE") = MaskedTextBox3.FormattedText
kayit("JOB PHONE") = MaskedTextBox2.FormattedText
kayit("INSURANCE TYPE") = UCase(Trim(Text11))
kayit.Update
hatayok = 0
If hatayok = 1 Then
MESAJ: MsgBox ("same registerno can not be used for two or more people ")
KayıtAç "SELECT [REGISTER NO],NAME,SURNAME FROM KAYITTABLOSU
WHERE [REGISTER NO]=" + Text2 + ""
NAMES = kayit("NAME")

```



```

SURNAMES = kayıt("SURNAME")
REGISTER = kayıt("REGISTER NO")
MsgBox (REGISTER + " NOSU " + NAMES + SURNAMES + " ISIM VE SOYISIM
LIKISIYE AIT")
Exit Sub
End If
End If
Else
MsgBox ("please,fill up all sections")
End If
End Sub

```

```

Private Sub KDCButton2_Click()

```

```

KDCButton1.Enabled = False

```

```

Text1 = ""

```

```

Text2 = ""

```

```

Text2.Enabled = False

```

```

Text3 = ""

```

```

Text4 = ""

```

```

Text5 = ""

```

```

Text6 = ""

```

```

Text7 = ""

```

```

Text8 = Date

```

```

Text9 = ""

```

```

Text10 = ""

```

```

Text11 = ""

```

```

Text11.Enabled = False

```

```

MaskedTextBox1.Text = ""

```

```

MaskedTextBox2.Text = ""

```

```

MaskedTextBox3.Text = ""

```

```

Combo1.Text = ""

```

```

Combo2.Text = ""

```

```

Combo3.Text = ""

```

```

Combo4.Text = ""

```

```

Check1.Value = 0

```

```

End Sub

```

```

Private Sub Text1_Change()

```

```

Text2 = Text1

```

```

End Sub

```

```

Private Sub Text3_LostFocus()

```

```

KDCButton1.Enabled = True

```

```

End Sub

```

```

Private Sub maskedbox1_lostfocus()
    If MaskedTextBox1.Text <> "" Then
        Text5 = Mid(Date, 7, 4) - Mid(MaskedTextBox1.Text, 5, 4)
    End If
End Sub

```

Codes of Search Menu

```

Private Sub DataGrid1_dblClick()
    If DataGrid1.Text <> "" Then
        X = DataGrid1.Columns(0)
        Y = DataGrid1.Columns(1)
        Z = DataGrid1.Columns(2)
        Form1.Label18 = Y
        Form1.Label19 = z
        Form1.Label28 = Y
        Form1.Label29 = z
        gelis = DataGrid1.Columns(3)
        kimlikAç "select [REGISTERNO], NAME, SURNAME, NEWCOMING,
        BIRTHDATE, AGE, JOB, SEX, MARITALSTATUS, [BLOOD TYPE],
        FATHERNAME, MOTHERNAME, [HOME ADDRESS], [JOB ADDRESS], [HOME
        PHONE], [JOB PHONE], [INSURANCE TYPE] from KAYITTABLOSU where
        [REGISTER NO]='" + X + "' and NAME='"' + Y + "' AND SURNAME='"' + z + "'"
        Form1.Text2 = kimlik("REGISTER NO")
        Form1.Text3 = kimlik("NAME")
        Form1.Text4 = kimlik("SURNAME")
        If kimlik("BIRTHDATE") = "___/___/___" Then
            Form1.MaskedTextBox1.Text = ""
        Else
            Form1.MaskedTextBox1.Text = Mid(kimlik("BIRTHDATE"), 1, 2) + " " +
            Mid(kimlik("BIRTHDATE"), 4, 2) + " " + Mid(kimlik("BIRTHDATE"), 7, 4)
        End If
        Form1.Text5 = kimlik("AGE")
        Form1.Combo1 = kimlik("JOB")
        Form1.Combo2 = kimlik("SEX")
        Form1.Combo3 = kimlik("MARITALSTATUS")
        Form1.Combo4 = kimlik("BLOOD TYPE")
        Form1.Text6 = kimlik("FATHERNAME")
        Form1.Text7 = kimlik("MOTHERNAME")
        Form1.Text9 = kimlik("HOME ADDRESS")
        Form1.Text10 = kimlik("JOB ADDRESS")
        Form1.MaskedTextBox3.Text = kimlik("HOME PHONE")
        Form1.MaskedTextBox2.Text = kimlik("JOB PHONE")
        Form1.Text11 = kimlik("INSURANCE TYPE")
        Form1.Text8 = kimlik("NEWCOMING")
    End If
End Sub

```



```

yatiscikisac "select * FROM YATISCIKISTABLOSU where [REGISTER NO]=" + X
+ " and COMING=" + Mid(gelis, 1, 2) + "." + Mid(gelis, 4, 2) + "." + Mid(gelis, 7, 4)
+ ""
If yatiscikis.RecordCount > 0 Then
If Val(yatiscikis("ENDMTINBED")) = 1 Then
endmtinbed = 1
End If
Form1.Check3.Value = Val(yatiscikis("ENDMTINBED"))
If Val(yatiscikis("MTINBED")) = 1 Then
mtinbed = 1
End If
Form1.Check2.Value = Val(yatiscikis("MTINBED"))
If yatiscikis("GOING") = "" Then
Form1.MaskedTextBox6.Text = ""
Else
Form1.MaskedTextBox6.Text = Mid(yatiscikis("GOING"), 1, 2) + "/" +
Mid(yatiscikis("GOING"), 3, 2) + "/" + Mid(yatiscikis("GOING"), 5, 4)
End If
If yatiscikis("LIEING") = "" Then
Form1.MaskedTextBox5.Text = ""
Else
Form1.MaskedTextBox5.Text = Mid(yatiscikis("LIEING"), 1, 2) + "/" +
Mid(yatiscikis("LIEING"), 3, 2) + "/" + Mid(yatiscikis("LIEING"), 5, 4)
End If
End If
hakkındaac "select * FROM BILGITABLOSU where [REGISTER NO]=" + X + " and
COMING=" + Mid(gelis, 1, 2) + "." + Mid(gelis, 4, 2) + "." + Mid(gelis, 7, 4) + "" '
AND NAME=" + y + " AND SURNAME=" + z + ""
If hakkında.RecordCount > 0 Then
hakkında.MoveFirst
Form1.Text14 = hakkında("DIAGNISIS")
Form1.Text15 = hakkında("MEDICAL TREATMENT")
Form1.Text13 = hakkında("DOCTOR NAME")
Form1.Text16 = hakkında("RECIPE")
Form1.Text1 = hakkında("REPORTDATE")
Form1.Label32 = "NUMBER OF REPORTS"
Form1.Label35 = hakkında.RecordCount
End If
yatakbölümAç "select * FROM YATAKBOLUMTABLOSU where REGISTERNO="
+ X + " and COMING=" + Mid(gelis, 1, 2) + "." + Mid(gelis, 4, 2) + "." + Mid(gelis,
7, 4) + "" ' AND NAME=" + y + " AND SURNAME=" + z + ""
If yatakbölüm.RecordCount > 0 Then
Form1.Text18 = yatakbölüm("BEDNO")
Form1.Text12 = yatakbölüm("DEPARTMENT")
End If
tarihAç "select REPORTDATE,COMING,[DOCTOR NAME] FROM
BILGITABLOSU where [REGISTER NO]=" + X + "" ' and COMING=" + Mid(gelis,
1, 2) + "." + Mid(gelis, 4, 2) + "." + Mid(gelis, 7, 4) + "" ' and NAME=" + y + " AND
SURNAME=" + z + ""

```

```

If tarih.RecordCount > 0 Then
Set Form1.DataGrid2.DataSource = tarih
End If
Form1.Visible = True
Form3.Visible = False
End If
End Sub

```

```

Private Sub Form_Load()
TEXTLER = 0
If bulmaformu = 0 Then
bulmaformu = 1
Else
bulmaformu = 0
End If
If bulmaformu = 1 Then
bulAç "select [REGISTER NO],NAME,SURNAME,NEWCOMING FROM
KAYITTABLOSU ORDER BY VAL([REGISTER NO])"
Set DataGrid1.DataSource = bul
End If
Text1 = ""
Text2 = ""
Text3 = ""
Check1.Value = 0
DTPicker1.Value = Date
DTPicker2.Value = Date
DTPicker1.Enabled = False
DTPicker2.Enabled = False
TEXTLER = 1
Form3.Top = 0
Form3.Left = (Screen.Width - (Form3.Width + 350))
End Sub

```

```

Private Sub Text1_Change()
Dim SORGU As String
If TEXTLER = 1 Then
If tarihdegisti = 1 Then
ILK = DTPicker1
SON = DTPicker2
List1.Clear
SORGU = "SELECT [REGISTER NO],NAME,SURNAME,NEWCOMING FROM
KAYITTABLOSU WHERE"
If Not Trim(Text1) = "" Then
SORGU = SORGU + " [REGISTER NO] LIKE" + Trim(Text1) + "% "
End If
If Not Trim(Text2) = "" Then
If Not Trim(Text1) = "" Then

```



```

SORGU = SORGU + " AND NAME LIKE" + Trim(Text2) + "%' "
Else
SORGU = SORGU + " NAME LIKE" + Trim(Text2) + "%' "
End If
End If
If Not Text3 = "" Then
If Trim(Text1) = "" Or Trim(Text2) = "" Then
SORGU = SORGU + " SURNAME LIKE" + Trim(Text3) + "%' "
Else
SORGU = SORGU + " AND SURNAME LIKE" + Trim(Text3) + "%' "
End If
End If
If Trim(Text1) = "" And Trim(Text2) = "" And Trim(Text3) = "" Then
SORGU = "SELECT [REGISTER NO],NAME,SURNAME,NEWCOMING FROM
KAYITTABLOSU where NEWCOMING >=" + Mid(ILK, 1, 2) + "." + Mid(ILK, 4, 2)
+ "." + Mid(ILK, 7, 4) + " AND NEWCOMING <=" + Mid(SON, 1, 2) + "." +
Mid(SON, 4, 2) + "." + Mid(SON, 7, 4) + " ORDER BY VAL([REGISTER NO])"
bulAç SORGU
GoTo git
End If
bulAç SORGU + " AND NEWCOMING >=" + Mid(ILK, 1, 2) + "." + Mid(ILK, 4, 2)
+ "." + Mid(ILK, 7, 4) + " AND NEWCOMING <=" + Mid(SON, 1, 2) + "." +
Mid(SON, 4, 2) + "." + Mid(SON, 7, 4) + " ORDER BY VAL([REGISTER NO])"
git:
Set DataGrid1.DataSource = bul
Else
List1.Clear
SORGU = "SELECT [REGISTER NO],NAME,SURNAME,NEWCOMING FROM
KAYITTABLOSU WHERE"
If Not Trim(Text1) = "" Then
SORGU = SORGU + " [REGISTER NO] LIKE" + Trim(Text1) + "%' "
End If
If Not Trim(Text2) = "" Then
If Not Trim(Text1) = "" Then
SORGU = SORGU + " AND NAME LIKE" + Trim(Text2) + "%' "
Else
SORGU = SORGU + " NAME LIKE" + Trim(Text2) + "%' "
End If
End If
If Not Trim(Text3) = "" Then
If Trim(Text1) = "" And Trim(Text2) = "" Then
SORGU = SORGU + " SURNAME LIKE" + Trim(Text3) + "%' "
Else
SORGU = SORGU + " AND SURNAME LIKE" + Trim(Text3) + "%' "
End If
End If
If Trim(Text1) = "" And Trim(Text2) = "" And Trim(Text3) = "" Then
SORGU = "SELECT [REGISTER NO], NAME, SURNAME, NEWCOMING FROM
KAYITTABLOSU"

```

End If
bulAç SORGU + " ORDER BY VAL([REGISTER NO])"

Set DataGridView1.DataSource = bul
End If
If bul.RecordCount > 0 Then
bul.MoveFirst
Do Until bul.EOF
List1.AddItem bul("NAME") + " " + bul("SURNAME")
bul.MoveNext
Loop
End If
End If
End Sub

Private Sub Text2_Change()
Dim SORGU As String
If TEXTLER = 1 Then
If tarihdegisti = 1 Then
ILK = DTPicker1
SON = DTPicker2
List1.Clear
SORGU = "SELECT [REGISTER NO],NAME,SURNAME,NEWCOMING FROM
KAYITTABLOSU WHERE"
If Not Trim(Text1) = "" Then
SORGU = SORGU + " [REGISTER NO] LIKE" + Trim(Text1) + "%' "
End If
If Not Trim(Text2) = "" Then
If Not Trim(Text1) = "" Then
SORGU = SORGU + " AND NAME LIKE" + Trim(Text2) + "%' "
Else
SORGU = SORGU + " NAME LIKE" + Trim(Text2) + "%' "
End If
End If
If Not Text3 = "" Then
If Trim(Text1) = "" Or Trim(Text2) = "" Then
SORGU = SORGU + " SURNAME LIKE" + Trim(Text3) + "%' "
Else
SORGU = SORGU + " AND SURNAME LIKE" + Trim(Text3) + "%' "
End If
End If
If Trim(Text1) = "" And Trim(Text2) = "" And Trim(Text3) = "" Then
SORGU = "SELECT [REGISTER NO], NAME, SURNAME, NEWCOMING FROM
KAYITTABLOSU where NEWCOMING >=" + Mid(ILK, 1, 2) + "." + Mid(ILK, 4, 2)
+ "." + Mid(ILK, 7, 4) + " AND NEWCOMING <=" + Mid(SON, 1, 2) + "." +
Mid(SON, 4, 2) + "." + Mid(SON, 7, 4) + " ORDER BY VAL([REGISTER NO])"
bulAç SORGU
GoTo git

End If

bulAç SORGU + " AND NEWCOMING >=" + Mid(ILK, 1, 2) + "." + Mid(ILK, 4, 2) + "." + Mid(ILK, 7, 4) + " AND NEWCOMING <=" + Mid(SON, 1, 2) + "." + Mid(SON, 4, 2) + "." + Mid(SON, 7, 4) + " ORDER BY VAL([REGISTER NO])"

git:

Set DataGrid1.DataSource = bul

Else

List1.Clear

SORGU = "SELECT [REGISTER NO],NAME,SURNAME,NEWCOMING FROM KAYITTABLOSU WHERE"

If Not Trim(Text1) = "" Then

SORGU = SORGU + " [REGISTER NO] LIKE" + Trim(Text1) + "%' "

End If

If Not Trim(Text2) = "" Then

If Not Trim(Text1) = "" Then

SORGU = SORGU + " AND NAME LIKE" + Trim(Text2) + "%' "

Else

SORGU = SORGU + " NAME LIKE" + Trim(Text2) + "%' "

End If

End If

If Not Trim(Text3) = "" Then

If Trim(Text1) = "" And Trim(Text2) = "" Then

SORGU = SORGU + " SURNAME LIKE" + Trim(Text3) + "%' "

Else

SORGU = SORGU + " AND SURNAME LIKE" + Trim(Text3) + "%' "

End If

End If

If Trim(Text1) = "" And Trim(Text2) = "" And Trim(Text3) = "" Then

SORGU = "SELECT [REGISTER NO],NAME,SURNAME,NEWCOMING FROM KAYITTABLOSU"

End If

bulAç SORGU + " ORDER BY VAL([REGISTER NO])"

Set DataGrid1.DataSource = bul

End If

If bul.RecordCount > 0 Then

bul.MoveFirst

Do Until bul.EOF

List1.AddItem bul("NAME") + " " + bul("SURNAME")

bul.MoveNext

Loop

End If

End If

End Sub

Private Sub DTPicker1_Change()

If DTPicker1.Value <= DTPicker2.Value Then

tarihfunc


```

Else
MsgBox ("first date must not be bigger than second date.")
DTPicker1.Value = Date
DTPicker2.Value = Date
End If
End Sub

```

```

Private Sub DTPicker2_Change()
If DTPicker2.Value >= DTPicker1.Value Then
tarihfunc
Else
MsgBox ("second date must not be small than first date.")
DTPicker1.Value = Date
DTPicker2.Value = Date
End If
End Sub

```

```

Private Sub Check1_Click()
tarihdegisti = Check1.Value
If tarihdegisti = 0 Then
DTPicker1.Enabled = False
DTPicker2.Enabled = False
Else
DTPicker1.Enabled = True
DTPicker2.Enabled = True
End If
End Sub

```

```

Public Sub tarihfunc()
ILK = DTPicker1
SON = DTPicker2
bulAç "select [REGISTER NO],NAME,SURNAME,NEWCOMING FROM
KAYITTABLOSU WHERE NEWCOMING >=# " + Mid(ILK, 1, 2) + "/" + Mid(ILK,
4, 2) + "/" + Mid(ILK, 7, 4) + " # AND NEWCOMING <= #" + Mid(SON, 1, 2) + "/"
+ Mid(SON, 4, 2) + "/" + Mid(SON, 7, 4) + "# order by val([REGISTER NO])"
List1.Clear
Set DataGrid1.DataSource = bul
If bul.RecordCount > 0 Then
bul.MoveFirst
Do Until bul.EOF
List1.AddItem bul("NAME") + " " + bul("SURNAME")
bul.MoveNext
Loop
End If
End Sub

```

```

Private Sub Text3_Change()
Dim SORGU As String
If TEXTLER = 1 Then
If tarihdegisti = 1 Then
ILK = DTPicker1
SON = DTPicker2
List1.Clear
SORGU = "SELECT [REGISTER NO],NAME,SURNAME,NEWCOMING FROM
KAYITTABLOSU WHERE"
If Not Trim(Text1) = "" Then
SORGU = SORGU + " [REGISTER NO] LIKE" + Trim(Text1) + "%' "
End If
If Not Trim(Text2) = "" Then
If Not Trim(Text1) = "" Then
SORGU = SORGU + " AND NAME LIKE" + Trim(Text2) + "%' "
Else
SORGU = SORGU + " NAME LIKE" + Trim(Text2) + "%' "
End If
End If
If Not Text3 = "" Then
If Trim(Text1) = "" Or Trim(Text2) = "" Then
SORGU = SORGU + " SURNAME LIKE" + Trim(Text3) + "%' "
Else
SORGU = SORGU + " AND SURNAME LIKE" + Trim(Text3) + "%' "
End If
End If
If Trim(Text1) = "" And Trim(Text2) = "" And Trim(Text3) = "" Then
SORGU = "SELECT [REGISTER NO],NAME,SURNAME,NEWCOMING FROM
KAYITTABLOSU where NEWCOMING >=" + Mid(ILK, 1, 2) + "." + Mid(ILK, 4, 2)
+ "." + Mid(ILK, 7, 4) + " AND NEWCOMING <=" + Mid(SON, 1, 2) + "." +
Mid(SON, 4, 2) + "." + Mid(SON, 7, 4) + " ORDER BY VAL([REGISTER NO])"
bulAç SORGU
GoTo git
End If
bulAç SORGU + " AND NEWCOMING >=" + Mid(ILK, 1, 2) + "." + Mid(ILK, 4,
2) + "." + Mid(ILK, 7, 4) + " AND NEWCOMING <=" + Mid(SON, 1, 2) + "." +
Mid(SON, 4, 2) + "." + Mid(SON, 7, 4) + " ORDER BY VAL([REGISTER NO])"
git:
Set DataGrid1.DataSource = bul
Else
List1.Clear
SORGU = "SELECT [REGISTER NO],NAME,SURNAME,NEWCOMING FROM
KAYITTABLOSU WHERE"
If Not Trim(Text1) = "" Then
SORGU = SORGU + " [REGISTER NO] LIKE" + Trim(Text1) + "%' "
End If

```

```

If Not Trim(Text2) = "" Then
If Not Trim(Text1) = "" Then
SORGU = SORGU + " AND NAME LIKE" + Trim(Text2) + "%' "
Else
SORGU = SORGU + " NAME LIKE" + Trim(Text2) + "%' "
End If
End If
If Not Trim(Text3) = "" Then
If Trim(Text1) = "" And Trim(Text2) = "" Then
SORGU = SORGU + " SURNAME LIKE" + Trim(Text3) + "%' "
Else
SORGU = SORGU + " AND SURNAME LIKE" + Trim(Text3) + "%' "
End If
End If
If Trim(Text1) = "" And Trim(Text2) = "" And Trim(Text3) = "" Then
SORGU = "SELECT [REGISTER NO],NAME,SURNAME,NEWCOMING FROM
KAYITTABLOSU"
End If
bulAç SORGU + " ORDER BY VAL([REGISTER NO])"
Set DataGrid1.DataSource = bul
End If
If bul.RecordCount > 0 Then
bul.MoveFirst
Do Until bul.EOF
List1.AddItem bul("NAME") + " " + bul("SURNAME")
bul.MoveNext
Loop
End If
End If
End Sub

```

Codes of Information Menu

```

Private Sub Check1_Click()
If Check1.Value = 1 Then
Text11.Enabled = False
formlistek = 1
Form4.Show
End If
If Check1.Value = 0 Then
Text11 = ""
Text11.Enabled = False
formlistek = 0
End If
End Sub

```



```

Private Function yatiscikisislemi()
    yatiscikisac "select * from YATISCIKISTABLOSU where [REGISTER NO]=" +
    kimlik("REGISTER NO") + " and COMING=" + Mid(Trim(Text8), 1, 2) + "." +
    Mid(Trim(Text8), 4, 2) + "." + Mid(Trim(Text8), 7, 4) + ""
    If yatiscikis.RecordCount > 0 Then
        cevap = MsgBox(" previous existed dates may be changed ?", vbYesNo +
        vbApplicationModal)
        If cevap = vbYes Then
            If check2onay = 1 Then
                If yatiscikis("GOING") = "" Then
                    yatiscikis.Delete
                    Exit Function
                Else
                    yatiscikis("LIEING") = MaskedTextBox5.Text
                    yatiscikis("MTINBED") = Check2.Value
                    yatiscikis.Update
                    Text18 = ""
                    Exit Function
                End If
            Else
                yatiscikis.Delete
                check2onay = 0
                Exit Function
            End If
            If check3onay = 1 Then
                If yatiscikis("LIEING") = "" Then
                    yatiscikis("ENDMTINBED") = Check3.Value
                    yatiscikis.Delete
                    Exit Function
                Else
                    yatiscikis("GOING") = MaskedTextBox6.Text
                    yatiscikis.Update
                    Exit Function
                End If
            Else
                yatiscikis("GOING") = MaskedTextBox6.Text
                yatiscikis.Update
                check3onay = 0
                Exit Function
            End If
        End If
        Else
            yatiscikis.AddNew
            yatiscikis("REGISTER NO") = kimlik("REGISTER NO")
            yatiscikis("COMING") = Text8
            yatiscikis("MTINBED") = Check2.Value
            yatiscikis("LIEING") = MaskedTextBox5.Text

```

```

yatiscikis("ENDMTINBED") = Check3.Value

yatiscikis("GOING") = MaskedTextBox6.Text
yatiscikis.Update
End If
End Function
Private Sub Check2_Click()
If Check2.Value = 1 Then
If mtinbed = 0 Then
If MaskedTextBox5 = "" Then
MaskedTextBox5.Text = Date
End If
MaskedTextBox6.Enabled = True
MaskedTextBox6.Text = ""
Check3.Enabled = True
cevap = MsgBox("APPROVAL FOR MEDICAL TREATMENT IN BED OF
PATIENT FOR TODAY DATE ", vbYesNo + vbApplicationModal, "APPROVAL")
If cevap = vbYes Then
yatiscikisislemi
Else
mtinbed = 1
MaskedTextBox5.Text = ""
Check2.Value = 0
MaskedTextBox6.Text = ""
MaskedTextBox6.Enabled = False
Check3.Enabled = False
Exit Sub
End If
End If
End If
If Check2.Value = 0 Then
If mtinbed = 0 Then
cevap = MsgBox("MEDICAL TREATMENT IN BED OF PATIENT WILL BE
CANSELED ", vbYesNo + vbApplicationModal, "APPROVAL")
If cevap = vbYes Then
Check2.Value = 0
MaskedTextBox5.Text = ""
MaskedTextBox6.Text = ""
MaskedTextBox6.Enabled = False
Check3.Enabled = False
check2onay = 1
yatiscikisislemi
bolumAc "select * from YATAKLAR where DEPARTMENT=" + Trim(Text12) + "
and BEDNO=" + Trim(Text18) + ""
If bolum.RecordCount > 0 Then
bolum("DURUM") = Trim("BOS")
bolum.Update
Text18 = ""
Command4.Value = True

```

End If

Else

mtinbed = 1

Check2.Value = 1

Exit Sub

End If

End If

End If

mtinbed = 0

End Sub

Private Sub Check3_Click()

If Check3.Value = 1 Then

If endmtinbed = 0 Then

If MaskedTextBox6.Text = "" Then

MaskedTextBox6.Text = Date

End If

cevap = MsgBox("APPROVAL PATIENT LEAVING FOR TODAY DATE ",
vbYesNo + vbApplicationModal, "APPROVAL")

If cevap = vbYes Then

yatiscikisislemi

bölümAç "select * from YATAKLAR where DEPARTMENT='" + Trim(Text12) + "
and BEDNO='" + Trim(Text18) + """

If bölüm.RecordCount > 0 Then

bölüm("DURUM") = Trim("BOS")

bölüm.Update

End If

Else

endmtinbed = 1

MaskedTextBox6.Text = ""

Check3.Value = 0

Exit Sub

End If

End If

End If

If Check3.Value = 0 Then

If endmtinbed = 0 Then

cevap = MsgBox("PATIENT LEAVING WILL BE CANSELED ", vbYesNo +
vbApplicationModal, "APPROVAL")

If cevap = vbYes Then

MaskedTextBox6.Text = ""

Check3.Value = 0

check3onay = 1

yatiscikisislemi

Else

endmtinbed = 1

Check3.Value = 1

Exit Sub

End If

End If

End If

endmtinbed = 0

End Sub

Private Sub Command10_Click()

If tarihtenokundu = 1 Then

hakkındaaç "SELECT * FROM BILGITABLOSU WHERE [REGISTER NO]=" +
kimlik("REGISTER NO") + " AND COMING=" + Mid(DataGrid2.Columns(1), 1, 2)
+ "." + Mid(DataGrid2.Columns(1), 4, 2) + "." + Mid(DataGrid2.Columns(1), 7, 4) +
""

If hakkında.RecordCount > 0 Then

hakkında.MoveFirst

tarihtenokundu = 0

End If

End If

If hakkında.RecordCount > 0 Then

hakkında.MovePrevious

If hakkında.BOF = True Then

hakkında.MoveLast

End If

Text1 = hakkında("REPORTDATE")

Text13 = hakkında("DOCTOR NAME")

Text14 = hakkında("DIAGNISIS")

Text15 = hakkında("MEDICAL TREATMENT")

Text16 = hakkında("RECIPE")

Else: MsgBox ("Record is empty")

End If

End Sub

Private Sub Command11_Click()

If tarihtenokundu = 1 Then

hakkındaaç "SELECT * FROM BILGITABLOSU WHERE [REGISTER NO]=" +
kimlik("REGISTER NO") + " AND COMING=" + Mid(DataGrid2.Columns(1), 1, 2)
+ "." + Mid(DataGrid2.Columns(1), 4, 2) + "." + Mid(DataGrid2.Columns(1), 7, 4) +
""

If hakkında.RecordCount > 0 Then

hakkında.MoveFirst

tarihtenokundu = 0

End If

End If

If hakkında.RecordCount > 0 Then

hakkında.MoveNext

If hakkında.EOF = True Then

hakkında.MoveFirst

End If

Text1 = hakkında("REPORTDATE")

Text13 = hakkında("DOCTOR NAME")

Text14 = hakkında("DIAGNISIS")

Text15 = hakkında("MEDICAL TREATMENT")

Text16 = hakkında("RECIPE")

Else: MsgBox ("Record is empty")

End If

End Sub

Private Sub Command12_Click()

If tarihtenokundu = 1 Then

hakkındaaç "SELECT * FROM BILGITABLOSU WHERE [REGISTER NO]='\" +
kimlik("REGISTER NO") + "\" AND COMING='\" + Mid(DataGrid2.Columns(1), 1, 2)
+ "\" + Mid(DataGrid2.Columns(1), 4, 2) + "\" + Mid(DataGrid2.Columns(1), 7, 4) +
\"\""

If hakkında.RecordCount > 0 Then

hakkında.MoveFirst

tarihtenokundu = 0

End If

End If

If hakkında.RecordCount > 0 Then

hakkında.MoveLast

Text1 = hakkında("REPORTDATE")

Text13 = hakkında("DOCTOR NAME")

Text14 = hakkında("DIAGNISIS")

Text15 = hakkında("MEDICAL TREATMENT")

Text16 = hakkında("RECIPE")

Else: MsgBox ("Record is empty")

End If

End Sub

Private Sub Command13_Click()

If Not Text12.Text = "" Then

hakkındaaç "SELECT * FROM BILGITABLOSU"

If hakkında.RecordCount > 0 Then

hakkındaaç "SELECT * FROM BILGITABLOSU where [REGISTER NO]='\" +

UCase(Trim(kimlik("REGISTER NO")))) + "\" and [DOCTOR NAME]='\" +

UCase(Trim(Text13)) + "\" and [DIAGNISIS]='\" + Text14 + "\" and [MEDICAL

TREATMENT]='\" + Text15 + "\" and [RECIPE]='\" + Text16 + "\" and

[REPORTDATE]='\" + Mid(Trim(Text1), 1, 2) + "\" + Mid(Trim(Text1), 4, 2) + "\" +

Mid(Trim(Text1), 7, 4) + \"\""

If hakkında.RecordCount > 0 Then

Var = 1

End If

End If

If Var = 0 Then

hakkındaAç "SELECT * FROM BILGITABLOSU"

hakkında.AddNew

hakkında("COMING") = Trim(Text8)

hakkında("REGISTER NO") = UCase(Trim(kimlik("REGISTER NO")))

hakkında("REPORTDATE") = Trim(Text1)

hakkında("DOCTOR NAME") = UCase(Trim(Text13))

hakkında("DIAGNISIS") = Text14

hakkında("MEDICAL TREATMENT") = Text15

hakkında("RECIPE") = Text16

hakkında.Update

End If

Var = 0

doktorunhastalarıAç "select * from DOKTORUNHASTASI where [PATIENT NO]="

+ hakkında("REGISTER NO") + " AND PATIENTCOMINGDATE=" +

Mid(hakkında("COMING"), 1, 2) + "." + Mid(hakkında("COMING"), 4, 2) + "." +

Mid(hakkında("COMING"), 7, 4) + ""

If Not doktorunhastaları.RecordCount > 0 Then

doktorunhastalarıAç "select * from DOKTORUNHASTASI"

doktorunhastaları.AddNew

doktorunhastaları("DOCTOR NAME") = UCase(Trim(Text13))

doktorunhastaları("PATIENT NO") = UCase(Trim(kimlik("REGISTER NO")))

doktorunhastaları("PATIENT NAME") = UCase(Trim(Text3))

doktorunhastaları("PATIENT SURNAME") = UCase(Trim(Text4))

doktorunhastaları("PATIENTCOMINGDATE") = Trim(Text8)

doktorunhastaları("PATIENT DEPARTMENT") = UCase(Trim(Text12))

doktorunhastaları.Update

End If

yatakbölümAç "SELECT * FROM YATAKBOLUMTABLOSU WHERE

REGISTERNO=" + hakkında("REGISTER NO") + " AND COMING=" +

Mid(hakkında("COMING"), 1, 2) + "." + Mid(hakkında("COMING"), 4, 2) + "." +

Mid(hakkında("COMING"), 7, 4) + ""

If Not yatakbölüm.RecordCount > 0 Then

yatakbölüm.AddNew

yatakbölüm("DEPARTMENT") = UCase(Trim(Text12))

yatakbölüm("BEDNO") = Trim(Text18)

yatakbölüm("COMING") = Trim(Text8)

yatakbölüm("REGISTERNO") = UCase(Trim(kimlik("REGISTER NO")))

yatakbölüm.Update

End If

Text13 = ""

Text14 = ""

Text15 = ""

Text16 = ""

Else

MsgBox ("please,fill into section of DEPARTMENT ")

End If

End Sub

```
Private Sub Command14_Click()  
If yatakbölüm.RecordCount > 0 Then  
Text12 = Trim(yatakbölüm("DEPARTMENT"))  
Text18 = Trim(yatakbölüm("BEDNO"))  
Else  
Text12 = ""  
Text18 = ""  
End If  
Text13 = ""  
Text14 = ""  
Text15 = ""  
Text16 = ""  
End Sub
```

```
Private Sub Command3_Click()  
kimlik("NAME") = UCase(Trim(Text3))  
kimlik("SURNAME") = UCase(Trim(Text4))  
kimlik("BIRTHDATE") = MaskedTextBox1.Text  
kimlik("JOB") = UCase(Trim(Combo1.Text))  
kimlik("SEX") = UCase(Trim(Combo2.Text))  
kimlik("MARITALSTATUS") = UCase(Trim(Combo3.Text))  
kimlik("BLOOD TYPE") = UCase(Trim(Combo4.Text))  
kimlik("AGE") = Val(Text5)  
kimlik("FATHERNAME") = UCase(Trim(Text6))  
kimlik("MOTHERNAME") = UCase(Trim(Text7))  
kimlik("HOME ADDRESS") = UCase(Trim(Text9))  
kimlik("JOB ADDRESS") = UCase(Trim(Text10))  
kimlik("HOME PHONE") = MaskedTextBox3.FormattedText  
kimlik("JOB PHONE") = MaskedTextBox2.FormattedText  
kimlik("INSURANCE TYPE") = UCase(Trim(Text11))  
kimlik.Update  
End Sub
```

```
Private Sub Command4_Click()  
If Not Text12.Text = "" Then  
cevap = MsgBox("CHANGES WILL BE SAVED!", vbYesNo + vbApplicationModal,  
"UPDATING")  
If cevap = vbYes Then  
If MaskedTextBox5.Text <> "" Then  
If Trim(Mid(Trim(Text1), 7, 4) + Mid(Trim(Text1), 4, 2) + Mid(Trim(Text1), 1, 2)) <  
Trim(Mid(MaskedTextBox5.Text, 5, 4) + Mid(MaskedTextBox5.Text, 3, 2) +  
Mid(MaskedTextBox5.Text, 1, 2)) Then  
cevap = MsgBox("date entried is wrong.it will be changed with today date ", vbYesNo)  
If cevap = vbYes Then
```

```

Text1 = Date
End If
If cevap = vbNo Then
Exit Sub
End If
End If
End If
End If
yatakbölümAç "SELECT * FROM YATAKBOLUMTABLOSU WHERE
REGISTERNO=" + kimlik("REGISTER NO") + " AND COMING=" +
Mid(kimlik("NEWCOMING"), 1, 2) + "." + Mid(kimlik("NEWCOMING"), 4, 2) + "."
+ Mid(kimlik("NEWCOMING"), 7, 4) + ""
If Not yatakbölüm.RecordCount > 0 Then
yatakbölüm.AddNew
yatakbölüm("REGISTERNO") = hakkında("REGISTER NO")
yatakbölüm("COMING") = hakkında("COMING")
yatakbölüm("DEPARTMENT") = UCase(Trim(Text12))
yatakbölüm("BEDNO") = Trim(Text18)
yatakbölüm.Update
Else
yatakbölüm("DEPARTMENT") = UCase(Trim(Text12))
yatakbölüm("BEDNO") = Trim(Text18)
yatakbölüm.Update
End If
hakkında("REPORTDATE") = Trim(Text1)
hakkında("DOCTOR NAME") = UCase(Trim(Text13))
hakkında("DIAGNISIS") = Text14
hakkında("MEDICAL TREATMENT") = Text15
hakkında("RECIPE") = Text16
hakkında.Update
End If
Else
MsgBox ("please,fill into section of DEPARTMENT ")
End If
End Sub

```

```

Private Sub Command9_Click()
If tarihtenokundu = 1 Then
hakkındaaç "SELECT * FROM BILGITABLOSU WHERE [REGISTER NO]=" +
kimlik("REGISTER NO") + " AND COMING=" + Mid(DataGrid2.Columns(1), 1, 2)
+ "." + Mid(DataGrid2.Columns(1), 4, 2) + "." + Mid(DataGrid2.Columns(1), 7, 4) +
""
If hakkında.RecordCount > 0 Then
hakkında.MoveFirst
tarihtenokundu = 0
End If
End If

```

If hakkında.RecordCount > 0 Then

hakkında.MoveFirst

Text1 = hakkında("REPORTDATE")

Text13 = hakkında("DOCTOR NAME")

Text14 = hakkında("DIAGNISIS")

Text15 = hakkında("MEDICAL TREATMENT")

Text16 = hakkında("RECIPE")

Else: MsgBox ("Record is empty")

End If

End Sub

Private Sub DataGrid2_dblClick()

hakkındaaÇ "SELECT * FROM BILGITABLOSU WHERE [REGISTER NO]=" +

kimlik("REGISTER NO") + " AND [DOCTOR NAME]=" + DataGrid2.Columns(2) +

" AND REPORTDATE=" + Mid(DataGrid2.Columns(0), 1, 2) + "." +

Mid(DataGrid2.Columns(0), 4, 2) + "." + Mid(DataGrid2.Columns(0), 7, 4) + ""

hakkında.MoveFirst

kimlikAÇ "SELECT * FROM KAYITTABLOSU WHERE [REGISTER NO]=" +

kimlik("REGISTER NO") + "" ' AND NEWCOMING=#" +

Mid(DataGrid2.Columns(1), 1, 2) + "/" + Mid(DataGrid2.Columns(1), 4, 2) + "/" +

Mid(DataGrid2.Columns(1), 7, 4) + "#"

yatıscıkısAÇ "SELECT * FROM YATISCIKISTABLOSU WHERE [REGISTER

NO]=" + kimlik("REGISTER NO") + " AND COMING=" +

Mid(DataGrid2.Columns(1), 1, 2) + "." + Mid(DataGrid2.Columns(1), 4, 2) + "." +

Mid(DataGrid2.Columns(1), 7, 4) + ""

yatak bölümAÇ "SELECT * FROM YATAKBOLUMTABLOSU WHERE

REGISTERNO=" + kimlik("REGISTER NO") + " AND COMING=" +

Mid(DataGrid2.Columns(1), 1, 2) + "." + Mid(DataGrid2.Columns(1), 4, 2) + "." +

Mid(DataGrid2.Columns(1), 7, 4) + ""

If yatak bölüm.RecordCount > 0 Then

Text12 = yatak bölüm("DEPARTMENT")

Text18 = yatak bölüm("BEDNO")

End If

If yatıscıkıs.RecordCount > 0 Then

mtinbed = 1

Check2.Value = yatıscıkıs("MTINBED")

MaskedTextBox5.Text = ""

MaskedTextBox5.Text = yatıscıkıs("LIEING")

endmtinbed = 1

Check3.Value = yatıscıkıs("ENDMTINBED")

MaskedTextBox6.Text = yatıscıkıs("GOING")

End If

Text1 = hakkında("REPORTDATE")

Text13 = hakkında("DOCTOR NAME")

Text14 = hakkında("DIAGNISIS")

Text15 = hakkında("MEDICAL TREATMENT")

Text16 = hakkında("RECIPE")

Label35 = hakkında.RecordCount

Text8 = kimlik("NEWCOMING")
Text2 = kimlik("REGISTER NO")
Text3 = kimlik("NAME")
Text4 = kimlik("SURNAME")
MaskedTextBox3.Text = kimlik("HOME PHONE")
Text9 = kimlik("HOME ADDRESS")
Text11 = kimlik("INSURANCE TYPE")
tarihtenokundu = 1
SSTab1.Tab = 1
End Sub

Private Sub Form_Load()

Frame1.Visible = False

Text17 = ""

Text12 = ""

Text13 = ""

Text14 = ""

Text15 = ""

Text16 = ""

Text18 = ""

Text1 = Date

Text8 = Date

MaskedTextBox5.Text = Date

MaskedTextBox6.Text = ""

MaskedTextBox6.Enabled = False

Check3.Enabled = False

Form1.Top = 0

Form1.Left = 0

End Sub

Private Sub KDCButton1_Click()

''' used to update identity inf.

kimlik("NAME") = UCase(Trim(Text3))

kimlik("SURNAME") = UCase(Trim(Text4))

kimlik("BIRTHDATE") = MaskedTextBox1.Text

kimlik("JOB") = UCase(Trim(Combo1.Text))

kimlik("SEX") = UCase(Trim(Combo2.Text))

kimlik("MARITALSTATUS") = UCase(Trim(Combo3.Text))

kimlik("BLOOD TYPE") = UCase(Trim(Combo4.Text))

kimlik("AGE") = Val(Text5)

kimlik("FATHERNAME") = UCase(Trim(Text6))

kimlik("MOTHERNAME") = UCase(Trim(Text7))

kimlik("HOME ADDRESS") = UCase(Trim(Text9))

kimlik("JOB ADDRESS") = UCase(Trim(Text10))

kimlik("HOME PHONE") = MaskedTextBox3.FormattedText



```
kimlik("JOB PHONE") = MaskedTextBox2.FormattedText
```

```
kimlik("INSURANCE TYPE") = UCase(Trim(Text11))
```

```
kimlik.Update
```

```
End Sub
```

```
Private Sub KDCButton10_Click()
```

```
If hakkında.RecordCount > 0 Then
```

```
cevap = MsgBox("REPORT WILL BE DELETED", vbYesNo + vbApplicationModal,  
"DELETING")
```

```
If cevap = vbYes Then
```

```
hakkında.Delete
```

```
hakkındaaç "SELECT * FROM BILGITABLOSU where [REGISTER NO]=" +  
kimlik("REGISTER NO") + " and COMING=" + Mid(kimlik("NEWCOMING"), 1, 2)  
+ "." + Mid(kimlik("NEWCOMING"), 4, 2) + "." + Mid(kimlik("NEWCOMING"), 7,  
4) + " and order by [REPORT DATE]"
```

```
hakkında.MoveFirst
```

```
Text8 = kimlik("NEWCOMING")
```

```
Text1 = hakkında("REPORTDATE")
```

```
Text13 = hakkında("DOCTOR NAME")
```

```
Text14 = hakkında("DIAGNISIS")
```

```
Text15 = hakkında("MEDICAL TREATMENT")
```

```
Text16 = hakkında("RECIPE")
```

```
Text2 = kimlik("REGISTER NO")
```

```
Text3 = kimlik("NAME")
```

```
Text4 = kimlik("SURNAME")
```

```
MaskedTextBox3.Text = kimlik("HOME PHONE")
```

```
Text9 = kimlik("HOME ADDRESS")
```

```
Text11 = kimlik("INSURANCE TYPE")
```

```
End If
```

```
End If
```

```
End Sub
```

```
Private Sub KDCButton11_Click()
```

```
Form6.RichTextBox1.TextRTF = Chr(10) + Chr(10) + Chr(10) + Chr(13) + "DOCTOR  
NAME: " + Chr(10) + Chr(13) + Text13 + Chr(10) + Chr(10) + Chr(10) + Chr(10) +  
Chr(13) + " DIAGNOSIS " + Chr(10) + Chr(10) + Chr(13) + Text14 + Chr(10) +  
Chr(10) + Chr(10) + Chr(13) + " MEDICAL TREATMENT: " + Chr(10) + Chr(10) +  
Chr(13) + Text15 + Chr(10) + Chr(10) + Chr(10) + Chr(13) + " RECIPES " + Chr(10)  
+ Chr(10) + Chr(13) + Text16 + Chr(10) + Chr(10)
```

```
Form6.Show
```

```
End Sub
```

```
Private Sub KDCButton12_Click()
```

```
If Not Text17 = "" Then
```

```
ilacAç "select * from ILACTABLOSU"
```

```
List1.AddItem UCase(Trim(Text17))
```

```
ilac.AddNew
```

```
ilac("ILACADI") = UCase(Trim(Text17))
```

```
ilac.Update
```

```
Text17 = ""
```

```
End If
```

```
End Sub
```

```
Private Sub KDCButton13_Click()
```

```
If Not List1.Text = "" Then
```

```
ilacAç "select * from ILACTABLOSU where ILACADI=" +
```

```
List1.List(List1.ListIndex) + ""
```

```
If ilac.RecordCount > 0 Then
```

```
ilac.Delete
```

```
End If
```

```
List1.RemoveItem List1.ListIndex
```

```
End If
```

```
End Sub
```

```
Private Sub KDCButton14_Click()
```

```
Frame1.Visible = False
```

```
Text17 = ""
```

```
Text16.SetFocus
```

```
End Sub
```

```
Private Sub KDCButton2_Click()
```

```
Frame1.Visible = True
```

```
Text17 = ""
```

```
List1.SetFocus
```

```
ilacAç "select * from ILACTABLOSU"
```

```
If Not List1.ListCount = ilac.RecordCount Then
```

```
List1.Clear
```

```
If ilac.RecordCount > 0 Then
```

```
ilac.MoveFirst
```

```
For i = 1 To ilac.RecordCount
```

```
List1.AddItem ilac("ILACADI")
```

```
ilac.MoveNext
```

```
Next
```

```
End If
```

```
End If
```

```
End Sub
```

```
Private Sub KDCButton3_Click()
```

```
If tarihtenokundu = 1 Then
```



```
hakkındaaç "SELECT * FROM BILGITABLOSU WHERE [REGISTER NO]=" +  
kimlik("REGISTER NO") + " AND COMING=" + Mid(DataGrid2.Columns(1), 1, 2)  
+ "." + Mid(DataGrid2.Columns(1), 4, 2) + "." + Mid(DataGrid2.Columns(1), 7, 4) +  
""
```

```
If hakkında.RecordCount > 0 Then
```

```
hakkında.MoveFirst
```

```
tarihtenokundu = 0
```

```
End If
```

```
End If
```

```
If hakkında.RecordCount > 0 Then
```

```
hakkında.MoveFirst
```

```
Text1 = hakkında("REPORTDATE")
```

```
Text13 = hakkında("DOCTOR NAME")
```

```
Text14 = hakkında("DIAGNISIS")
```

```
Text15 = hakkında("MEDICAL TREATMENT")
```

```
Text16 = hakkında("RECIPE")
```

```
Else: MsgBox ("Record is empty")
```

```
End If
```

```
End Sub
```

```
Private Sub KDCButton4_Click()
```

```
If tarihtenokundu = 1 Then
```

```
hakkındaaç "SELECT * FROM BILGITABLOSU WHERE [REGISTER NO]=" +  
kimlik("REGISTER NO") + " AND COMING=" + Mid(DataGrid2.Columns(1), 1, 2)  
+ "." + Mid(DataGrid2.Columns(1), 4, 2) + "." + Mid(DataGrid2.Columns(1), 7, 4) +  
""
```

```
If hakkında.RecordCount > 0 Then
```

```
hakkında.MoveFirst
```

```
tarihtenokundu = 0
```

```
End If
```

```
End If
```

```
If hakkında.RecordCount > 0 Then
```

```
hakkında.MovePrevious
```

```
If hakkında.BOF = True Then
```

```
hakkında.MoveLast
```

```
End If
```

```
Text1 = hakkında("REPORTDATE")
```

```
Text13 = hakkında("DOCTOR NAME")
```

```
Text14 = hakkında("DIAGNISIS")
```

```
Text15 = hakkında("MEDICAL TREATMENT")
```

```
Text16 = hakkında("RECIPE")
```

```
Else: MsgBox ("Record is empty")
```

```
End If
```

```
End Sub
```

```
Private Sub KDCButton5_Click()
```

```
If tarihtenokundu = 1 Then
```

```

hakkındaaç "SELECT * FROM BILGITABLOSU WHERE [REGISTER NO]=" +
kimlik("REGISTER NO") + " AND COMING=" + Mid(DataGrid2.Columns(1), 1, 2)
+ "." + Mid(DataGrid2.Columns(1), 4, 2) + "." + Mid(DataGrid2.Columns(1), 7, 4) +
""

```

```

If hakkında.RecordCount > 0 Then

```

```

    hakkında.MoveFirst

```

```

    tarihtenokundu = 0

```

```

End If

```

```

End If

```

```

If hakkında.RecordCount > 0 Then

```

```

    hakkında.MoveNext

```

```

    If hakkında.EOF = True Then

```

```

        hakkında.MoveFirst

```

```

    End If

```

```

    Text1 = hakkında("REPORTDATE")

```

```

    Text13 = hakkında("DOCTOR NAME")

```

```

    Text14 = hakkında("DIAGNISIS")

```

```

    Text15 = hakkında("MEDICAL TREATMENT")

```

```

    Text16 = hakkında("RECIPE")

```

```

Else: MsgBox ("Record is empty")

```

```

End If

```

```

End Sub

```

```

Private Sub KDCButton6_Click()

```

```

    If tarihtenokundu = 1 Then

```

```

        hakkındaaç "SELECT * FROM BILGITABLOSU WHERE [REGISTER NO]=" +
kimlik("REGISTER NO") + " AND COMING=" + Mid(DataGrid2.Columns(1), 1, 2)
+ "." + Mid(DataGrid2.Columns(1), 4, 2) + "." + Mid(DataGrid2.Columns(1), 7, 4) +
""

```

```

    If hakkında.RecordCount > 0 Then

```

```

        hakkında.MoveFirst

```

```

        tarihtenokundu = 0

```

```

    End If

```

```

End If

```

```

If hakkında.RecordCount > 0 Then

```

```

    hakkında.MoveLast

```

```

    Text1 = hakkında("REPORTDATE")

```

```

    Text13 = hakkında("DOCTOR NAME")

```

```

    Text14 = hakkında("DIAGNISIS")

```

```

    Text15 = hakkında("MEDICAL TREATMENT")

```

```

    Text16 = hakkında("RECIPE")

```

```

Else: MsgBox ("Record is empty")

```

```

End If

```

```

End Sub

```

```

Private Sub KDCButton7_Click()

```

```

    If yatak bölüm.RecordCount > 0 Then

```

```

Text12 = Trim(yatakbölüm("DEPARTMENT"))
Text18 = Trim(yatakbölüm("BEDNO"))
Else
Text12 = ""
Text18 = ""
End If
Text13 = ""
Text14 = ""
Text15 = ""
Text16 = ""
End Sub

```

```

Private Sub KDCButton8_Click()
If Not Text12.Text = "" Then
cevap = MsgBox("CHANGES WILL BE SAVED!", vbYesNo + vbApplicationModal,
"UPDATING")
If cevap = vbYes Then
If MaskedTextBox5.Text <> "" Then
If Trim(Mid(Trim(Text1), 7, 4) + Mid(Trim(Text1), 4, 2) + Mid(Trim(Text1), 1, 2)) <
Trim(Mid(MaskedTextBox5.Text, 5, 4) + Mid(MaskedTextBox5.Text, 3, 2) +
Mid(MaskedTextBox5.Text, 1, 2)) Then
cevap = MsgBox("date entried is wrong.it will be changed with today date ", vbYesNo)
If cevap = vbYes Then
Text1 = Date
End If
If cevap = vbNo Then
Exit Sub
End If
End If
End If
yatakbölümAç "SELECT * FROM YATAKBOLUMTABLOSU WHERE
REGISTERNO=" + kimlik("REGISTER NO") + " AND COMING=" +
Mid(kimlik("NEWCOMING"), 1, 2) + "." + Mid(kimlik("NEWCOMING"), 4, 2) + "."
+ Mid(kimlik("NEWCOMING"), 7, 4) + ""
If Not yatakbölüm.RecordCount > 0 Then
yatakbölüm.AddNew
yatakbölüm("REGISTERNO") = hakkında("REGISTER NO")
yatakbölüm("COMING") = hakkında("COMING")
yatakbölüm("DEPARTMENT") = UCase(Trim(Text12))
yatakbölüm("BEDNO") = Trim(Text18)
yatakbölüm.Update
Else
yatakbölüm("DEPARTMENT") = UCase(Trim(Text12))
yatakbölüm("BEDNO") = Trim(Text18)
yatakbölüm.Update
End If

```



```

hakkında("REPORTDATE") = Trim(Text1)
hakkında("DOCTOR NAME") = UCase(Trim(Text13))
hakkında("DIAGNISIS") = Text14
hakkında("MEDICAL TREATMENT") = Text15
hakkında("RECIPE") = Text16
hakkında.Update
End If
Else
MsgBox ("please,fill into section of DEPARTMENT ")
End If
End Sub

```

```

Private Sub KDCButton9_Click()
If Not Text12.Text = "" Then
hakkındaaç "SELECT * FROM BILGITABLOSU"
If hakkında.RecordCount > 0 Then
hakkındaaç "SELECT * FROM BILGITABLOSU where [REGISTER NO]=" +
UCase(Trim(kimlik("REGISTER NO"))) + " and [DOCTOR NAME]=" +
UCase(Trim(Text13)) + " and [DIAGNISIS]=" + Text14 + " and [MEDICAL
TREATMENT]=" + Text15 + " and [RECIPE]=" + Text16 + " and
[REPORTDATE]=" + Mid(Trim(Text1), 1, 2) + "." + Mid(Trim(Text1), 4, 2) + "." +
Mid(Trim(Text1), 7, 4) + ""
If hakkında.RecordCount > 0 Then
Var = 1
End If
End If
If Var = 0 Then
hakkındaaç "SELECT * FROM BILGITABLOSU"
hakkında.AddNew
hakkında("COMING") = Trim(Text8)
hakkında("REGISTER NO") = UCase(Trim(kimlik("REGISTER NO")))
hakkında("REPORTDATE") = Trim(Text1)
hakkında("DOCTOR NAME") = UCase(Trim(Text13))
hakkında("DIAGNISIS") = Text14
hakkında("MEDICAL TREATMENT") = Text15
hakkında("RECIPE") = Text16
hakkında.Update
End If
Var = 0
doktorunhastalarıAç "select * from DOKTORUNHASTASI where [PATIENT NO]="
+ hakkında("REGISTER NO") + " AND PATIENTCOMINGDATE=" +
Mid(hakkında("COMING"), 1, 2) + "." + Mid(hakkında("COMING"), 4, 2) + "." +
Mid(hakkında("COMING"), 7, 4) + ""
If Not doktorunhastaları.RecordCount > 0 Then
doktorunhastalarıAç "select * from DOKTORUNHASTASI"
doktorunhastaları.AddNew

```

```

doktorunhastaları("DOCTOR NAME") = UCase(Trim(Text13))
doktorunhastaları("PATIENT NO") = UCase(Trim(kimlik("REGISTER NO")))
doktorunhastaları("PATIENT NAME") = UCase(Trim(Text3))
doktorunhastaları("PATIENT SURNAME") = UCase(Trim(Text4))
doktorunhastaları("PATIENTCOMINGDATE") = Trim(Text8)
doktorunhastaları("PATIENT DEPARTMENT") = UCase(Trim(Text12))
doktorunhastaları.Update
End If
yatakbölümAç "SELECT * FROM YATAKBOLUMTABLOSU WHERE
REGISTERNO=" + hakkında("REGISTER NO") + " AND COMING=" +
Mid(hakkında("COMING"), 1, 2) + "." + Mid(hakkında("COMING"), 4, 2) + "." +
Mid(hakkında("COMING"), 7, 4) + ""
If Not yatakbölüm.RecordCount > 0 Then
yatakbölüm.AddNew
yatakbölüm("DEPARTMENT") = UCase(Trim(Text12))
yatakbölüm("BEDNO") = Trim(Text18)
yatakbölüm("COMING") = Trim(Text8)
yatakbölüm("REGISTERNO") = UCase(Trim(kimlik("REGISTER NO")))
yatakbölüm.Update
End If
Text13 = ""
Text14 = ""
Text15 = ""
Text16 = ""
Else
MsgBox ("please,fill into section of DEPARTMENT ")
End If
End Sub

```

```

Private Sub List1_DblClick()
If Text16 = "" Then
Text16 = List1.Text
Else
Text16 = Text16 + Chr(10) + Chr(13) + List1.Text
End If
End Sub

```

```

Private Sub maskedbox1_lostfocus()
If MaskedTextBox1.Text <> "" Then
Text5 = Mid(Date, 7, 4) - Mid(MaskedTextBox1.Text, 5, 4)
End If
End Sub

```

```

Private Sub Text12_Click()
If Text12 = "" Then
form1bölümistek = 1
Form5.Show
Else
form1bölümistek = 1
Form5.Show
degisecekbölümadı = Trim(Text12)
If Not Text18 = "" Then
bölümdekiyatakiptal = Trim(Text18)
End If
End If
End Sub

```

```

Private Sub Text13_Click()
Form7.Show
form1doktoristek = 1
End Sub

```

```

Private Sub Text18_Click()
If Text18 = "" Then
If Text12 = "" Then
Form5.Visible = True
yatakistek = 1
Else
Form5.DataGrid1.Text = Text12
Form5.Command1.Value = True
Form5.Visible = True
Form5.Frame2.Visible = True
yatakistek = 1
End If
Else
If Not Text18 = "" And Not Text12 = "" Then
text18bosdegil = Text18
Form5.DataGrid1.Text = Text12
Form5.Command1.Value = True
Form5.Visible = True
Form5.Frame2.Visible = True
yatakistek = 1
End If
End If
End Sub

```


Codes of Insurance Menu

```
Private Sub DataGrid1_dblClick()  
If form2istek = 1 Then  
If sigorta.RecordCount > 0 Then  
Form2.Text11 = ""  
sigortaAç "SELECT * FROM SIGORTATABLOSU WHERE [INSURANCE  
TYPE]='" + DataGrid1.Text + ""  
Form2.Text11 = sigorta("INSURANCE TYPE")  
Else  
MsgBox ("NO INSURANCE TYPE")  
Form2.Show  
Form2.Check1.Value = 0  
Form4.Visible = False  
End If  
End If  
If form1istek = 1 Then  
If sigorta.RecordCount > 0 Then  
Form1.Text11 = ""  
Form1.Text11 = DataGrid1.Text  
Else  
MsgBox ("NO INSURANCE TYPE")  
Form1.Show  
Form1.Check1.Value = 0  
Form4.Visible = False  
End If  
End If  
form2istek = 0  
form1istek = 0  
Form4.Visible = False  
End Sub
```

```
Private Sub Form_Load()  
sigortaAç "select [INSURANCE TYPE] from SIGORTATABLOSU order by  
[INSURANCE NO]"  
Set DataGrid1.DataSource = sigorta  
Frame1.Visible = False  
Text1 = ""  
Text2 = ""  
KDCButton2.Caption = "UPDATE/SAVE"  
Form4.Top = 50  
Form4.Left = (Screen.Width - (Form4.Width + 350))  
End Sub
```

```

Private Sub KDCButton1_Click()
Frame1.Visible = True
Frame1.Caption = " NEW INSURANCE TYPE "
Text1 = ""
Text2 = ""
KDCButton2.Caption = "SAVE"
yenisigorta = 1
KDCButton4.Enabled = False
End Sub

```

```

Private Sub KDCButton2_Click()
If Text1 = "" Or Text2 = "" Then
MsgBox ("any record has not been made..")
GoTo skip
End If
If yenisigorta = 1 Then
sigortaAç "SELECT * FROM SIGORTATABLOSU WHERE [INSURANCE
TYPE]=" + Text2 + ""
If sigorta.RecordCount > 0 Then
GoTo skip
Else
sigortaAç "SELECT * FROM SIGORTATABLOSU"
sigorta.AddNew
sigorta("INSURANCE NO") = Val(Trim((Text1)))
sigorta("INSURANCE TYPE") = UCase(Trim(Text2))
sigorta.Update
End If
End If
If updateistek = 1 Then
If Not sigorta.RecordCount > 0 Then
GoTo skip
Else
sigorta("INSURANCE NO") = Val(Trim(Text1))
sigorta("INSURANCE TYPE") = UCase(Trim(Text2))
sigorta.Update
End If
End If
skip: Frame1.Visible = False
sigortaAç "SELECT [INSURANCE TYPE] FROM SIGORTATABLOSU "
Set DataGrid1.DataSource = sigorta
updateistek = 0
yenisigorta = 0
KDCButton4.Enabled = True
KDCButton2.Caption = "UPDATE/SAVE"
End Sub

```

```

Private Sub KDCButton3_Click()
sigortaAç "select * from SIGORTATABLOSU "
If sigorta.RecordCount > 0 Then
If Not DataGrid1.Text = "" Then
Frame1.Visible = True
Frame1.Caption = " EDIT "
sigortaAç "SELECT * FROM SIGORTATABLOSU WHERE [INSURANCE NO]="
+ DataGrid1.Text + " OR [INSURANCE TYPE]=" + DataGrid1.Text + ""
Text1 = sigorta("INSURANCE NO")
Text2 = sigorta("INSURANCE TYPE")
KDCButton2.Caption = "UPDATE"
KDCButton4.Enabled = False
updateistek = 1
End If
End If
End Sub

```

```

Private Sub KDCButton4_Click()
sigortaAç "select * from SIGORTATABLOSU "
If sigorta.RecordCount > 0 Then
sigortaAç "SELECT * FROM SIGORTATABLOSU WHERE [INSURANCE TYPE]=
" + DataGrid1.Text + "OR [INSURANCE NO]=" + DataGrid1.Text + ""
If sigorta.RecordCount > 0 Then
cevap = MsgBox(" " + DataGrid1.Text + " " " " + " record will be deleted", vbYesNo +
vbCritical, "DELETING")
If cevap = vbYes Then
sigorta.Delete
End If
End If
End If
Form_Load
End Sub

```

```

Private Sub KDCButton5_Click()
Frame1.Visible = False
yenisigorta = 0
updateistek = 0
KDCButton4.Enabled = True
KDCButton2.Caption = "UPDATE/SAVE"
End Sub

```

Codes of Department Menu


```
Private Sub Command1_Click()  
KDCButton1.Visible = False  
KDCButton2.Visible = False
```

```
KDCButton3.Visible = False  
KDCButton4.Visible = False  
KDCButton5.Visible = False  
List1.Clear  
Label4.Caption = DataGrid1.Text  
Frame2.Visible = True  
bölümAç "SELECT * FROM YATAKLAR WHERE DEPARTMENT=" +  
DataGrid1.Text + " ORDER BY VAL(BEDNO)"  
YATAKSAYISI = bölüm.RecordCount  
Label6.Caption = YATAKSAYISI  
bölümAç "SELECT * FROM YATAKLAR WHERE DEPARTMENT=" +  
DataGrid1.Text + " AND DURUM=" + "BOS" + " ORDER BY VAL(BEDNO)"  
If bölüm.RecordCount > 0 Then  
BOSYATAKSAYISI = bölüm.RecordCount  
Label8.Caption = BOSYATAKSAYISI  
bölüm.MoveFirst  
Do Until bölüm.EOF  
List1.AddItem bölüm("BEDNO")  
bölüm.MoveNext  
Loop  
End If  
End Sub
```

```
Private Sub DataGrid1_dblClick()  
bölümAç "select * from BOLUMTABLOSU"  
If form1bölümistek = 1 Then  
If bölümdekiyatakiptal = "" Then  
Form1.Visible = False  
If bölüm.RecordCount > 0 Then  
Form1.Text12 = ""  
bölümAç "SELECT * FROM BOLUMTABLOSU WHERE [DEPARTMENT  
NAME]=" + DataGrid1.Text + "" ' OR [INSURANCE TYPE]=" + DataGrid1.Text +  
""  
Form1.Text12 = bölüm("DEPARTMENT NAME")  
form1bölümistek = 0  
Else  
MsgBox ("JUST NO DEPARTMENT ")  
Form1.Show  
Form1.Text12 = ""  
Form5.Visible = False  
End If  
Else
```

```

bölümAç "select * from YATAKLAR where BEDNO=" + bölümdekiyatakiptal + ""
and DEPARTMENT=" + degisecekbölümadı + ""
bölüm("durum") = "BOS"
bölüm.Update
Form1.Text18 = ""

```

```

bölümAç "SELECT * FROM BOLUMTABLOSU WHERE [DEPARTMENT
NAME]=" + DataGrid1.Text + "" ' OR [INSURANCE TYPE]=" + DataGrid1.Text +
""

```

```

Form1.Text12 = bölüm("DEPARTMENT NAME")
form1bölümistek = 0
End If
Form1.Show
Form_Load
Form5.Visible = False
End If
End Sub

```

```

Private Sub Form_Load()
bölümAç "select [DEPARTMENT NAME] from BOLUMTABLOSU "
Frame1.Visible = False
Frame2.Visible = False
Command1.Visible = False
Set DataGrid1.DataSource = bölüm
Form5.Top = 20
Form5.Left = (Screen.Width - (Form5.Width + 350))
End Sub

```

```

Private Sub KDCButton1_Click()
Frame1.Visible = True
Frame1.Caption = " NEW INSURANCE TYPE "
Text1 = ""
Text2 = ""
KDCButton2.Caption = "SAVE"
yenibölüm = 1
KDCButton4.Enabled = False
End Sub

```

```

Private Sub KDCButton2_Click()
'''used for new recording or for updating
If Text1 = "" Or Text2 = "" Then
MsgBox ("any record has not been made..")
GoTo skip
End If
If yenibölüm = 1 Then

```

```

bölümAç "SELECT * FROM BOLUMTABLOSU WHERE [DEPARTMENT
NAME]='" + Text2 + ""
If bölüm.RecordCount > 0 Then
GoTo skip
Else
bölümAç "SELECT * FROM BOLUMTABLOSU"

```

```

bölüm.AddNew
bölüm("DEPARTMENT NO") = Val(Text1)
bölüm("DEPARTMENT NAME") = Text2
bölüm.Update
End If
End If
If blmupdateistek = 1 Then
If Not bölüm.RecordCount > 0 Then
GoTo skip
Else
bölüm("DEPARTMENT NO") = Text1
bölüm("DEPARTMENT NAME") = Text2
bölüm.Update
End If
End If
skip: Frame1.Visible = False
bölümAç "SELECT [DEPARTMENT NAME] FROM BOLUMTABLOSU "
Set DataGrid1.DataSource = bölüm
yenibölüm = 0
blmupdateistek = 0
KDCButton4.Enabled = True
KDCButton2.Caption = "UPDATE/SAVE"
End Sub

```

```

Private Sub KDCButton3_Click()
''' used to update department name
bölümAç "select * from BOLUMTABLOSU "
If bölüm.RecordCount > 0 Then
If Not DataGrid1.Text = "" Then
Frame1.Visible = True
Frame1.Caption = " EDIT "
bölümAç "SELECT * FROM BOLUMTABLOSU WHERE [DEPARTMENT
NAME]='" + DataGrid1.Text + ""
Text1 = bölüm("DEPARTMENT NO")
Text2 = bölüm("DEPARTMENT NAME")
KDCButton2.Caption = "UPDATE"
KDCButton4.Enabled = False
blmupdateistek = 1
End If
End If

```


End Sub

Private Sub KDCButton4_Click()

'''used to delete department

bölümAç "select * from BOLUMTABLOSU "

If bölüm.RecordCount > 0 Then

bölümAç "SELECT * FROM BOLUMTABLOSU WHERE [DEPARTMENT
NAME]= " + DataGrid1.Text + ""

If bölüm.RecordCount > 0 Then

cevap = MsgBox(" " + DataGrid1.Text + " " + " record will be deleted", vbYesNo +
vbCritical, "DELETING")

If cevap = vbYes Then

bölüm.Delete

End If

End If

End If

Form_Load

End Sub

Private Sub KDCButton5_Click()

'''used to see whether beds in deparment empty or not

KDCButton1.Visible = False

KDCButton2.Visible = False

KDCButton3.Visible = False

KDCButton4.Visible = False

KDCButton5.Visible = False

List1.Clear

Label4.Caption = DataGrid1.Text

Frame2.Visible = True

bölümAç "SELECT * FROM YATAKLAR WHERE DEPARTMENT=" +
DataGrid1.Text + " ORDER BY VAL(BEDNO)"

YATAKSAYISI = bölüm.RecordCount

Label6.Caption = YATAKSAYISI

bölümAç "SELECT * FROM YATAKLAR WHERE DEPARTMENT=" +
DataGrid1.Text + " AND DURUM=" + "BOS" + " ORDER BY VAL(BEDNO)"

If bölüm.RecordCount > 0 Then

BOSYATAKSAYISI = bölüm.RecordCount

Label8.Caption = BOSYATAKSAYISI

bölüm.MoveFirst

Do Until bölüm.EOF

List1.AddItem bölüm("BEDNO")

bölüm.MoveNext

Loop

End If

End Sub

```

Private Sub KDCButton6_Click()
'''used to add new bad to department
ekyapıldı = 0
List1.Clear
bölümAç "SELECT * FROM YATAKLAR WHERE DEPARTMENT=" +
DataGrid1.Text + " ORDER BY VAL(BEDNO)"

If Not bölüm.RecordCount > 0 Then
EKYATAK = 1
GoTo skip
Else
bölüm.MoveFirst
For i = 1 To bölüm.RecordCount
If i = Val(bölüm("BEDNO")) Then
bölüm.MoveNext
GoTo git
Else
bölüm.AddNew
bölüm("BEDNO") = i
bölüm("DEPARTMENT") = DataGrid1.Text
bölüm("DURUM") = "BOS"
bölüm.Update
ekyapıldı = 1
bölümAç "SELECT * FROM YATAKLAR WHERE DEPARTMENT=" +
DataGrid1.Text + " and DURUM=" + "BOS" + " ORDER BY VAL(BEDNO)"
bölüm.MoveFirst
List1.Clear
Do Until bölüm.EOF
List1.AddItem bölüm("BEDNO")
bölüm.MoveNext
Loop
Exit For
End If
git: Next
If Not ekyapıldı = 1 Then
bölüm.MoveLast
EKYATAK = Val(bölüm("BEDNO")) + 1
bölümAç "SELECT * FROM YATAKLAR WHERE DEPARTMENT=" +
DataGrid1.Text + " ORDER BY VAL(BEDNO)"
skip: bölüm.AddNew
bölüm("BEDNO") = Trim(Str(EKYATAK))
bölüm("DEPARTMENT") = DataGrid1.Text
bölüm("DURUM") = "BOS"
bölüm.Update
bölümAç "SELECT * FROM YATAKLAR WHERE DEPARTMENT=" +
DataGrid1.Text + " and DURUM=" + "BOS" + " ORDER BY VAL(BEDNO)"

```

```

bölüm.MoveFirst
Do Until bölüm.EOF
List1.AddItem bölüm("BEDNO")
bölüm.MoveNext
Loop
End If
End If
End Sub

```

```

Private Sub KDCButton7_Click()
'''used to remove selected bad from depart.
bölümAç "SELECT * FROM YATAKLAR WHERE DEPARTMENT=" +
DataGrid1.Text + " ORDER BY VAL(BEDNO)"
If bölüm.RecordCount > 0 Then
If Not List1.List(List1.ListIndex) = " " Then
bölümAç "SELECT * FROM YATAKLAR WHERE DEPARTMENT=" +
DataGrid1.Text + " AND BEDNO=" + List1.List(List1.ListIndex) + " ORDER BY
VAL(BEDNO)"
If bölüm.RecordCount > 0 Then
bölüm.Delete
End If
End If
bölümAç "SELECT * FROM YATAKLAR WHERE DEPARTMENT=" +
DataGrid1.Text + " and DURUM=" + "BOS" + " ORDER BY VAL(BEDNO)"
If bölüm.RecordCount > 0 Then
bölüm.MoveFirst
List1.Clear
Do Until bölüm.EOF
List1.AddItem bölüm("BEDNO")
bölüm.MoveNext
Loop
End If
End If
End Sub

```

```

Private Sub KDCButton8_Click()
Form_Load
KDCButton1.Visible = True
KDCButton2.Visible = True
KDCButton3.Visible = True
KDCButton4.Visible = True
KDCButton5.Visible = True
End Sub

```

```

Private Sub KDCButton9_Click()

```



```

Frame2.Visible = False
Frame1.Visible = False
yenibölüm = 0
blmupdateistek = 0
KDCButton4.Enabled = True
KDCButton2.Caption = "UPDATE/SAVE"
End Sub

```

```

Private Sub List1_DblClick()
If yatakistek = 1 Then 'And Form1.Text18 = "" Then
If Not Form1.Text12 = DataGrid1.Text Then
cevap = MsgBox("THERE IS JUST SELECTED AND A DIFFERENT
DEPARTMENT NAME" + Chr(10) + Chr(13) + "IF YOU CHOOSE 'YES'
DEPARTMENT NAME WILL BE CHANGED", vbYesNo + vbInformation)
If cevap = vbYes Then
Form1.Text18 = Trim(List1.List(List1.ListIndex))
If Not text18bosdegil = "" Then
bölümAç "select * from YATAKLAR where BEDNO=" + text18bosdegil + " and
DEPARTMENT=" + DataGrid1.Text1 + ""
bölüm("DURUM") = "BOS"
bölüm.Update
End If
bölümAç "SELECT * FROM YATAKLAR WHERE BEDNO=" +
Trim(List1.List(List1.ListIndex)) + " AND DEPARTMENT=" + DataGrid1.Text + ""
bölüm("DURUM") = "DOLU"
bölüm.Update
Form1.Text12 = UCase(Trim(DataGrid1.Text))
Form_Load
Form5.Visible = False
Form1.Visible = True
form1bölümistek = 0
KDCButton1.Visible = True
KDCButton2.Visible = True
KDCButton3.Visible = True
KDCButton4.Visible = True
KDCButton5.Visible = True
End If
Else
Form1.Text18 = Trim(List1.List(List1.ListIndex))
If Not text18bosdegil = "" Then
bölümAç "select * from YATAKLAR where BEDNO=" + text18bosdegil + " and
DEPARTMENT=" + DataGrid1.Text + ""
bölüm("DURUM") = "BOS"
bölüm.Update
End If

```

```

bölümAç "SELECT * FROM YATAKLAR WHERE BEDNO=" +
Trim(List1.List(List1.ListIndex)) + " AND DEPARTMENT=" + DataGrid1.Text + ""
bölüm("DURUM") = "DOLU"
bölüm.Update
Form_Load
Form5.Visible = False
Form1.Visible = True
form1bölümistek = 0
KDCButton1.Visible = True
KDCButton2.Visible = True
KDCButton3.Visible = True

```

```

KDCButton4.Visible = True
KDCButton5.Visible = True
End If
End If
End Sub

```

Codes of Report Menu

```

Private Sub Combo2_Click()
RichTextBox1.SelFontSize = Val(Combo2.Text)
End Sub

```

```

Private Sub Combo3_Click()
Text1 = Combo3.Text
raporaç "select * from REPORTABLOSU"
If rapor.RecordCount > 0 Then
rapor.MoveFirst
Do Until rapor.EOF
If Trim(Combo3.Text) = Trim(rapor("RAPORADI")) Then
If Not IsNull(rapor("RAPORADI")) Then
RichTextBox1.TextRTF = rapor("RAPORICERIGI")
RichTextBox1.BackColor = rapor("RAPORBACKGROUND")
Else
RichTextBox1.TextRTF = ""
End If
End If
rapor.MoveNext
Loop
End If
End Sub

```

```

Private Sub Combo1_Click()
If RichTextBox1.SelStart = 0 Then
If RichTextBox1.SelLength = Len(RichTextBox1.Text) Then

```

```

RichTextBox1.Font = Combo1.Text
Else
RichTextBox1.SelFontName = Combo1.Text
End If
End If
If RichTextBox1.SelStart <> 0 Then RichTextBox1.SelFontName = Combo1.Text
End Sub

```

```

Private Sub Combo3_DropDown()
Combo3.Clear
raporaç "select * from REPORTABLOSU"

```

```

If rapor.RecordCount > 0 Then
rapor.MoveFirst
Do Until rapor.EOF
Combo3.AddItem rapor("RAPORADI")
rapor.MoveNext
Loop
End If
End Sub

```

```

Private Sub Form_Load()
For i = 0 To Screen.FontCount - 1
Combo1.AddItem Screen.Fonts(i)
Next i
For i = 1 To 100
Combo2.AddItem i
Next i
Form_Resize
Combo2.Text = RichTextBox1.SelFontSize
Combo1.Text = RichTextBox1.SelFontName
raporaç "select * from REPORTABLOSU"
If rapor.RecordCount > 0 Then
rapor.MoveFirst
Do Until rapor.EOF
Combo3.AddItem rapor("RAPORADI")
rapor.MoveNext
Loop
End If
Form6.Top = 0
Form6.Left = (Screen.Width - (Form6.Width + 350))
Form6.Width = 10700
Form6.Height = 8880
Frame1.Visible = False
Timer1.Enabled = False
Text1.Enabled = False

```


End Sub

Private Sub Form_Unload(Cancel As Integer)

Close

End Sub

Private Sub RichTextBox1_SelChange()

With Form6.ToolBar1

If IsNull(RichTextBox1.SelBullet) Then

.Buttons("Kopyala").Enabled = False

Else

.Buttons("Kopyala").Value = Abs(RichTextBox1.SelBullet)

.Buttons("Kopyala").Enabled = True

End If

If IsNull(RichTextBox1.SelBold) Then

.Buttons("Kalin").MixedState = True

Else

.Buttons("Kalin").Value = Abs(RichTextBox1.SelBold)

.Buttons("Kalin").MixedState = False

End If

If IsNull(RichTextBox1.SelItalic) Then

.Buttons("Egik").MixedState = True

Else

.Buttons("Egik").Value = Abs(RichTextBox1.SelItalic)

.Buttons("Egik").MixedState = False

End If

If IsNull(RichTextBox1.SelUnderline) Then

.Buttons("AltÇ").MixedState = True

Else

.Buttons("AltÇ").Value = Abs(RichTextBox1.SelUnderline)

.Buttons("AltÇ").MixedState = False

End If

If IsNull(RichTextBox1.SelFontSize) Then

Combo2.Text = ""

Else

Combo2.Text = RichTextBox1.SelFontSize

End If

If IsNull(RichTextBox1.SelFontName) Then

Combo1.Text = ""

Else

Combo1.Text = RichTextBox1.SelFontName

End If

End With

End Sub

```

Private Sub Timer1_Timer()
Frame1.Visible = False
RichTextBox1.SetFocus
Timer1.Enabled = False
End Sub

```

```

Private Sub ToolBar1_ButtonClick(ByVal Button As MSComctlLib.Button)
Dim bul As Integer
raporaç "select * from REPORTABLOSU"
On Error Resume Next
Select Case Button.Key

```

```

Case "Yeni":
Combo3.ListIndex = -1
RichTextBox1.TextRTF = ""

```

```

Case "Kaydet":
rapadı = InputBox("Enter report name that will be recorded", "REPORT NAME")
If Not rapadı = "" Then
raporaç "select * from REPORTABLOSU where raporadı='" + UCase(Trim(rapadı)) +
""""
Text1.Enabled = False
Text1 = rapadı
If rapor.RecordCount > 0 Then
cevap = MsgBox("just there is a report which name is " + UCase(Trim(rapadı)) + " ""
+ Chr(10) + Chr(13) + " Do you want to change content of this Report", vbYesNo +
vbApplicationModal, "CHANGING CONTENT OF REPORT")
If cevap = vbYes Then
rapor("RAPORADI") = UCase(Trim(Text1))
If RichTextBox1.TextRTF = "" Then
Timer1.Enabled = True
Timer1.Interval = 4000
Text1 = ""
Frame1.Visible = True
Label3 = "You have not entered any content about report that will be recorded"
GoTo skip
Else
rapor("RAPORICERIGI") = RichTextBox1.TextRTF
End If
rapor("RAPORBACKROUND") = RichTextBox1.BackColor
rapor.Update
MsgBox "Content of Report has been changed..", 64, "CHANGING CONTENT OF
REPORT"
Else

```

```

Text1 = ""
End If
Else
rapor.AddNew
rapor("RAPORADI") = UCase(Trim(Text1))
If RichTextBox1.Text = "" Then
Timer1.Enabled = True
Timer1.Interval = 4000
Text1 = ""
Frame1.Visible = True
Label3 = "You have not entered any content about report that will be recorded"
GoTo skip
Else
rapor("RAPORICERIGI") = RichTextBox1.TextRTF
End If

```

```

rapor("RAPORBACKROUND") = RichTextBox1.BackColor
rapor.Update
MsgBox "Report has been saved..", 64, "RECORDING"
skip: End If
Else
Frame1.Visible = True
Label3 = "You have to enter reportname..."
Timer1.Interval = 4000
Timer1.Enabled = True
End If

```

Case "Aç":

```

sec = InputBox("select report name that will be indicated", "REPORT NAME")
raporaç "select * from REPORTABLOSU"
If rapor.RecordCount > 0 Then
i = 1
rapor.MoveFirst
Do Until rapor.EOF
If Trim(sec) = Trim(rapor("RAPORADI")) Then
bul = i
End If
i = i + 1
Loop
If bul > 0 Then Combo3.ListIndex = bul - 1
End If

```

Case "yRenk":

```

dlgCommonDialog.Flags = cdlCFEffects Or cdlCFBoth
dlgCommonDialog.ShowFont
With RichTextBox1
.SelFontName = dlgCommonDialog.FontName

```



```

Combo1.Text = RichTextBox1.SelFontName
.SelFontSize = dlgCommonDialog.FontSize
Combo2.Text = RichTextBox1.SelFontSize
.SelBold = dlgCommonDialog.FontBold
.SelItalic = dlgCommonDialog.FontItalic
.SelUnderline = dlgCommonDialog.FontUnderline
.SelColor = dlgCommonDialog.Color
End With

```

```

Case "Renk":
dlgCommonDialog.ShowColor
RichTextBox1.BackColor = dlgCommonDialog.Color

```

```

Case "Yazdır":
On Error Resume Next
With dlgCommonDialog

```

```

.DialogTitle = "Print"
.CancelError = True
.Flags = cdlPDReturnDC + cdlPDNoPageNums
If RichTextBox1.SelLength = 0 Then
.Flags = .Flags + cdlPDAllPages
Else
.Flags = .Flags + cdlPDSelection
End If
.ShowPrinter
If Err <> MSComDlg.cdlCancel Then
RichTextBox1.SelPrint .hDC
End If
End With

```

```

Case "Kes":
On Error Resume Next
Clipboard.SetText RichTextBox1.SelRTF
RichTextBox1.SelText = vbNullString

```

```

Case "Kopyala":
On Error Resume Next
Clipboard.SetText RichTextBox1.SelRTF

```

```

Case "Yapıştır":
On Error Resume Next
RichTextBox1.SelRTF = Clipboard.GetText

```

```

Case "Kalın": RichTextBox1.SelBold = Not RichTextBox1.SelBold

```

```

Case "Eğik": RichTextBox1.SelItalic = Not RichTextBox1.SelItalic

```

Case "AltÇ": RichTextBox1.SelUnderline = Not RichTextBox1.SelUnderline

Case "Sol": RichTextBox1.SelAlignment = rtfLeft

Case "Ortaya": RichTextBox1.SelAlignment = rtfCenter

Case "Sağ": RichTextBox1.SelAlignment = rtfRight

Case "Sil":

If Combo3.ListIndex < 0 Then

MsgBox "Select report that will be deleted.....!", 48, "WARNING"

End If

If Combo3.ListIndex > -1 Then

raporaç "select * from REPORTABLOSU where raporadı=" +

UCase(Trim(Combo3.Text)) + """

If rapor.RecordCount > 0 Then

rapor.MoveFirst

sıradaki: cevap = MsgBox("Now, Report which name is "" + rapor("RAPORADI") +
"" will be delete", vbYesNoCancel + vbCritical, "DELETING")

Select Case cevap

Case vbYes: rapor.Delete

Do Until rapor.EOF

rapor.MoveNext

GoTo sıradaki

Loop

Case vbNo:

rapor.MoveNext

Do Until rapor.EOF

GoTo sıradaki

Loop

Case vbCancel:

GoTo iptal

End Select

End If

Reset

RichTextBox1.TextRTF = ""

Combo3.Clear

End If

End Select

iptal: raporaç "select * from REPORTABLOSU"

If rapor.RecordCount > 0 Then

rapor.MoveFirst

Do Until rapor.EOF

```

Combo3.AddItem rapor("RAPORADI")
rapor.MoveNext
Loop
End If
End Sub

```

```

Private Sub Form_Resize()
On Error Resume Next
RichTextBox1.RightMargin = RichTextBox1.Width - 400
RichTextBox1.SelIndent = 300
End Sub

```

Codes of Doctors Menu

```

Private Sub Command1_Click()
Text1 = ""
Text2 = ""

```

```

Text3 = ""
Text4 = ""
Frame1.Caption = "SAVE"
Frame1.Visible = True
Command2.Enabled = True
Command2.Caption = "SAVE"
Command4.Enabled = False
yenidoktor = 1
End Sub

```

```

Private Sub Command2_Click()
If Text1 <> "" And Text2 <> "" And Text3 <> "" And Text4 <> "" Then
If yenidoktor = 1 Then
doktorAç "select * from DOKTORLAR where DOCTORNAMESURNAME='" +
Text3 + "'" and DOCTORTITLE='" + Text2 + "'" and DOCTORNO='" + Text1 + "'" and
DOCTORDEPARTMENT='" + Text4 + "'"
If Not doktor.RecordCount > 0 Then
doktorAç "select * from DOKTORLAR"
doktor.AddNew
doktor("DOCTORNAMESURNAME") = UCase(Trim(Text3))
doktor("DOCTORNO") = UCase(Trim(Text1))
doktor("DOCTORTITLE") = UCase(Trim(Text2))
doktor("DOCTORDEPARTMENT") = UCase(Trim(Text4))
doktor.Update
Else
doktorAç "select * from DOKTORLAR"
GoTo skip
End If

```



```

End If
If doktorupdateistek = 1 Then
doktorAç "select * from DOKTORLAR where DOCTORNAMESURNAME=" +
Text3 + " and DOCTORTITLE=" + Text2 + " and DOCTORNO=" + Text1 + " and
DOCTORDEPARTMENT=" + Text4 + ""
If doktor.RecordCount > 0 Then
GoTo skip
Else
doktorAç "select * from DOKTORLAR where DOCTORNAMESURNAME=" + ad +
"" and DOCTORTITLE=" + unvan + " and DOCTORNO=" + numara + " and
DOCTORDEPARTMENT=" + doktoricinbölüm + ""
doktor("DOCTORNAMESURNAME") = UCase(Trim(Text3))
doktor("DOCTORNO") = UCase(Trim(Text1))
doktor("DOCTORTITLE") = UCase(Trim(Text2))
doktor("DOCTORDEPARTMENT") = UCase(Trim(Text4))
doktor.Update
End If
End If
skip: Frame1.Visible = False

```

```

doktorAç "select * from DOKTORLAR"
Set DataGrid1.DataSource = doktor
doktorupdateistek = 0
yenidoktor = 0
Command2.Enabled = False
Command2.Caption = "UPDATE/SAVE"
Command4.Enabled = True
Else
cevap = MsgBox("you must fill into all sections" + Chr(10) + Chr(13) + "press to
continue record "RETRY" button , to quit from record "CANCEL" button",
vbRetryCancel + vbCritical, "WARNING")
If cevap = vbRetry Then
Else
Form_Load
End If
End If
End Sub

```

```

Private Sub Command3_Click()
If Not DataGrid1.Text = "" Then
Frame1.Visible = True
Frame1.Caption = " EDIT "
doktorAç "select * from DOKTORLAR where DOCTORNAMESURNAME=" +
DataGrid1.Columns(1) + " and DOCTORTITLE=" + DataGrid1.Columns(0) + " and
DOCTORNO=" + DataGrid1.Columns(3) + " and DOCTORDEPARTMENT=" +
DataGrid1.Columns(2) + ""
Text3 = doktor("DOCTORNAMESURNAME")

```

```

Text1 = doktor("DOCTORNO")
Text2 = doktor("DOCTORTITLE")
Text4 = doktor("DOCTORDEPARTMENT")
Command2.Enabled = True
Command2.Caption = "UPDATE"
Command4.Enabled = False
doktorupdateistek = 1
numara = Text1
unvan = Text2
ad = Text3
doktoricinbolum = Text4
End If
End Sub

```

```

Private Sub Command4_Click()
doktorAç "select * from DOKTORLAR "
If doktor.RecordCount > 0 Then
doktorAç "select * from DOKTORLAR where DOCTORNAMESURNAME=" +
DataGrid1.Columns(1) + " and DOCTORTITLE=" + DataGrid1.Columns(0) + " and

```

```

DOCTORNO=" + DataGrid1.Columns(3) + " and DOCTORDEPARTMENT=" +
DataGrid1.Columns(2) + ""
If doktor.RecordCount > 0 Then
cevap = MsgBox(" " + DataGrid1.Columns(1) + " " + " " + " record will be
deleted", vbYesNo + vbCritical, "DELETING")
If cevap = vbYes Then
doktor.Delete
End If
End If
End If
Form_Load
End Sub

```

```

Private Sub DataGrid1_dblClick()
If DataGrid1.Text <> "" Then
If form1doktoristek = 1 Then
Form1.Text13 = UCase(Trim(DataGrid1.Columns(0) + " " + DataGrid1.Columns(1)))
form1doktoristek = 0
Form_Load
Form7.Visible = False
Else
doktorunhastalarıAç "select * from DOKTORUNHASTASI where [DOCTOR
NAME]=" + UCase(Trim(DataGrid1.Columns(0) + " " + DataGrid1.Columns(1))) + ""
If doktorunhastaları.RecordCount > 0 Then
Set DataGrid2.DataSource = doktorunhastaları
DataGrid2.Visible = True

```

```

End If
End If
End If
End Sub

```

```

Private Sub DataGrid2_dblClick()
If DataGrid2.Text <> "" Then
hastaadı = DataGrid2.Columns(1)
hastasoyadı = DataGrid2.Columns(2)
hastanınnumarası = DataGrid2.Columns(3)
Form1.Label18 = hastaadı
Form1.Label19 = hastasoyadı
Form1.Label28 = hastaadı
Form1.Label29 = hastasoyadı
gelis = DataGrid2.Columns(4)
kimlikAç "select [REGISTER
NO],NAME,SURNAME,NEWCOMING,BIRTHDATE,AGE,JOB,SEX,MARITALST
ATUS,[BLOOD TYPE],FATHERNAME,MOTHERNAME,[HOME ADDRESS],[JOB
ADDRESS],[HOME PHONE],[JOB PHONE],[INSURANCE TYPE] from
KAYITTABLOSU where [REGISTER NO]=" + hastanınnumarası + " and NAME="
+ hastaadı + " AND SURNAME=" + hastasoyadı + ""
Form1.Text2 = kimlik("REGISTER NO")
Form1.Text3 = kimlik("NAME")
Form1.Text4 = kimlik("SURNAME")
If kimlik("BIRTHDATE") = "__/__/____" Then
Form1.MaskedTextBox1.Text = ""
Else
Form1.MaskedTextBox1.Text = Mid(kimlik("BIRTHDATE"), 1, 2) + " " +
Mid(kimlik("BIRTHDATE"), 4, 2) + " " + Mid(kimlik("BIRTHDATE"), 7, 4)
End If
Form1.Text5 = kimlik("AGE")
Form1.Combo1 = kimlik("JOB")
Form1.Combo2 = kimlik("SEX")
Form1.Combo3 = kimlik("MARITALSTATUS")
Form1.Combo4 = kimlik("BLOOD TYPE")
Form1.Text6 = kimlik("FATHERNAME")
Form1.Text7 = kimlik("MOTHERNAME")
Form1.Text9 = kimlik("HOME ADDRESS")
Form1.Text10 = kimlik("JOB ADDRESS")
Form1.MaskedTextBox3.Text = kimlik("HOME PHONE")
Form1.MaskedTextBox2.Text = kimlik("JOB PHONE")
Form1.Text11 = kimlik("INSURANCE TYPE")
Form1.Text8 = kimlik("NEWCOMING")
yaticıkısac "select * FROM YATISCIKISTABLOSU where [REGISTER NO]=" +
hastanınnumarası + " and COMING=" + Mid(gelis, 1, 2) + "." + Mid(gelis, 4, 2) + "."
+ Mid(gelis, 7, 4) + ""
If yaticıkısac.RecordCount > 0 Then

```



```

If Val(yatiscikis("ENDMTINBED")) = 1 Then
endmtinbed = 1
End If
Form1.Check3.Value = Val(yatiscikis("ENDMTINBED"))
If Val(yatiscikis("MTINBED")) = 1 Then
mtinbed = 1
End If
Form1.Check2.Value = Val(yatiscikis("MTINBED"))
If yatiscikis("GOING") = "" Then
Form1.MaskedTextBox6.Text = ""
Else
Form1.MaskedTextBox6.Text = Mid(yatiscikis("GOING"), 1, 2) + "/" +
Mid(yatiscikis("GOING"), 3, 2) + "/" + Mid(yatiscikis("GOING"), 5, 4)
End If
If yatiscikis("LIEING") = "" Then
Form1.MaskedTextBox5.Text = ""
Else
Form1.MaskedTextBox5.Text = Mid(yatiscikis("LIEING"), 1, 2) + "/" +
Mid(yatiscikis("LIEING"), 3, 2) + "/" + Mid(yatiscikis("LIEING"), 5, 4)
End If
End If

```

```

hakkındaaÇ "select * FROM BILGITABLOSU where [REGISTER NO]=" +
hastanınnumarası + " and [DOCTOR NAME]=" + DataGrid2.Columns(0) + " and
COMING=" + Mid(gelis, 1, 2) + "." + Mid(gelis, 4, 2) + "." + Mid(gelis, 7, 4) + "" '
AND NAME=" + hastaadı + " AND SURNAME=" + hastasoyadı + ""

```

```

If hakkında.RecordCount > 0 Then
hakkında.MoveFirst
Form1.Text14 = hakkında("DIAGNISIS")
Form1.Text15 = hakkında("MEDICAL TREATMENT")
Form1.Text13 = hakkında("DOCTOR NAME")
Form1.Text16 = hakkında("RECIPE")
Form1.Text1 = hakkında("REPORTDATE")
Form1.Label32 = "NUMBER OF REPORTS WRITTEN BY " +
DataGrid2.Columns(0)
Form1.Label35 = hakkında.RecordCount
End If

```

```

yatakbölümAç "select * FROM YATAKBOLUMTABLOSU where REGISTERN0="
+ hastanınnumarası + " and COMING=" + Mid(gelis, 1, 2) + "." + Mid(gelis, 4, 2) +
"." + Mid(gelis, 7, 4) + "" ' AND NAME=" + hastaadı + " AND SURNAME=" +
hastasoyadı + ""

```

```

If yatakbölüm.RecordCount > 0 Then
Form1.Text18 = yatakbölüm("BEDNO")
Form1.Text12 = yatakbölüm("DEPARTMENT")
End If

```

```

tarihAç "select REPORTDATE,COMING,[DOCTOR NAME] FROM
BILGITABLOSU where [REGISTER NO]=" + hastanınnumarası + "" ' and

```

```

COMING="" + Mid(gelis, 1, 2) + "." + Mid(gelis, 4, 2) + "." + Mid(gelis, 7, 4) + "" '
and NAME="" + hastaadi + " AND SURNAME="" + hastasoyadi + ""
If tarih.RecordCount > 0 Then
Set Form1.DataGrid2.DataSource = tarih
End If
Form1.Visible = True
Form7.Visible = False
End If
Form_Load
End Sub

```

```

Private Sub Form_GotFocus()
doktorAç "select * from DOKTORLAR"
If doktor.RecordCount > 0 Then
Set DataGrid1.DataSource = doktor
End If
Text1 = ""
Text2 = ""
Text3 = ""
Frame1.Caption = ""
Frame1.Visible = False
DataGrid2.Visible = False
KDCButton2.Caption = "SAVE/UPDATE"
End Sub

```

```

Private Sub Form_Load()
doktorAç "select * from DOKTORLAR"
If doktor.RecordCount > 0 Then
Set DataGrid1.DataSource = doktor
End If
Text1 = ""
Text2 = ""
Text3 = ""
Frame1.Caption = ""
Frame1.Visible = False
DataGrid2.Visible = False
KDCButton2.Caption = "SAVE/UPDATE"
KDCButton2.Enabled = False
Form7.Top = 250
Form7.Left = (Screen.Width - (Form7.Width + 350))
End Sub

```

```

Private Sub KDCButton1_Click()
Text1 = ""
Text2 = ""
Text3 = ""

```

```

Text4 = ""
Frame1.Caption = "SAVE"
Frame1.Visible = True
KDCButton2.Enabled = True
KDCButton2.Caption = "SAVE"
KDCButton4.Enabled = False
yenidoktor = 1
End Sub

```

```

Private Sub KDCButton2_Click()
If Text1 <> "" And Text2 <> "" And Text3 <> "" And Text4 <> "" Then
If yenidoktor = 1 Then
doktorAç "select * from DOKTORLAR where DOCTORNAMESURNAME=" +
Text3 + "" and DOCTORTITLE=" + Text2 + "" and DOCTORNO=" + Text1 + "" and
DOCTORDEPARTMENT=" + Text4 + ""
If Not doktor.RecordCount > 0 Then
doktorAç "select * from DOKTORLAR"
doktor.AddNew
doktor("DOCTORNAMESURNAME") = UCase(Trim(Text3))
doktor("DOCTORNO") = UCase(Trim(Text1))
doktor("DOCTORTITLE") = UCase(Trim(Text2))
doktor("DOCTORDEPARTMENT") = UCase(Trim(Text4))

```

```

doktor.Update
Else
doktorAç "select * from DOKTORLAR"
GoTo skip
End If
End If
If doktorupdateistek = 1 Then
doktorAç "select * from DOKTORLAR where DOCTORNAMESURNAME=" +
Text3 + "" and DOCTORTITLE=" + Text2 + "" and DOCTORNO=" + Text1 + "" and
DOCTORDEPARTMENT=" + Text4 + ""
If doktor.RecordCount > 0 Then
GoTo skip
Else
doktorAç "select * from DOKTORLAR where DOCTORNAMESURNAME=" + ad +
"" and DOCTORTITLE=" + unvan + "" and DOCTORNO=" + numara + "" and
DOCTORDEPARTMENT=" + doktor için bölüm + ""
doktor("DOCTORNAMESURNAME") = UCase(Trim(Text3))
doktor("DOCTORNO") = UCase(Trim(Text1))
doktor("DOCTORTITLE") = UCase(Trim(Text2))
doktor("DOCTORDEPARTMENT") = UCase(Trim(Text4))
doktor.Update
End If
End If
skip: Frame1.Visible = False

```



```

doktorAç "select * from DOKTORLAR"
Set DataGrid1.DataSource = doktor
doktorupdateistek = 0
yenidoktor = 0
KDCButton2.Enabled = False
KDCButton2.Caption = "UPDATE/SAVE"
KDCButton4.Enabled = True
Else
cevap = MsgBox("you must fill into all sections" + Chr(10) + Chr(13) + "press to
continue record "RETRY" button , to quit from record "CANCEL" button",
vbRetryCancel + vbCritical, "WARNING")
If cevap = vbRetry Then
Else
Form_Load
End If
End If
End Sub

```

```

Private Sub KDCButton3_Click()
If Not DataGrid1.Text = "" Then
Frame1.Visible = True
Frame1.Caption = " EDIT "

```

```

doktorAç "select * from DOKTORLAR where DOCTORNAMESURNAME='" +
DataGrid1.Columns(1) + "' and DOCTORTITLE='" + DataGrid1.Columns(0) + "' and
DOCTORNO='" + DataGrid1.Columns(3) + "' and DOCTORDEPARTMENT='" +
DataGrid1.Columns(2) + "'"
Text3 = doktor("DOCTORNAMESURNAME")
Text1 = doktor("DOCTORNO")
Text2 = doktor("DOCTORTITLE")
Text4 = doktor("DOCTORDEPARTMENT")
KDCButton2.Enabled = True
KDCButton2.Caption = "UPDATE"
KDCButton4.Enabled = False
doktorupdateistek = 1
numara = Text1
unvan = Text2
ad = Text3
doktoribölüm = Text4
End If
End Sub

```

```

Private Sub KDCButton4_Click()
doktorAç "select * from DOKTORLAR "
If doktor.RecordCount > 0 Then

```

```

doktorAç "select * from DOKTORLAR where DOCTORNAMESURNAME='" +
DataGrid1.Columns(1) + "' and DOCTORTITLE='" + DataGrid1.Columns(0) + "' and
DOCTORNO='" + DataGrid1.Columns(3) + "' and DOCTORDEPARTMENT='" +
DataGrid1.Columns(2) + "'"
If doktor.RecordCount > 0 Then
cevap = MsgBox(" " + DataGrid1.Columns(1) + " " + " record will be deleted",
vbYesNo + vbCritical, "DELETING")
If cevap = vbYes Then
doktor.Delete
End If
End If
End If
Form_Load
End Sub

```

```

Private Sub KDCButton5_Click()
Frame1.Visible = False
doktorupdateistek = 0
yenidoktor = 0
DataGrid2.Visible = False
KDCButton2.Enabled = False
KDCButton2.Caption = "UPDATE/SAVE"
KDCButton4.Enabled = True
End Sub

```

Codes of About Hospital and Password Menus

```

Private Sub Form_Load()
Form8.Top = 0
Form8.Left = (Screen.Width - (Form8.Width + 350))
hastaneAç "select * from HASTANEHAKKINDA"
If hastane.RecordCount > 0 Then
RichTextBox1.TextRTF = hastane("ABOUTHOSPITAL")
End If
End Sub

```

```

Private Sub Label1_MouseMove(Button As Integer, Shift As Integer, X As Single, Y
As Single)
mousex = Str(X)
mousey = Str(Y)
x1yer = Label1.Width / 3
x1yeri = Label1.Width - x1yer
x2yer = Label1.Width / 4
x2yeri = Label1.Width - x2yer
y1yer = Label1.Height / 3

```

```

y2yer = Label1.Height / 8
If Val(mousex) < x2yeri And Val(mousex) > x1yeri And Val(mousey) > y2yer And
Val(mousey) < y1yer Then
Label1.Caption = "All Right of Program Reserved By Gökhan KOÇ"
Else
Label1.Caption = ""
End If
End Sub

```

```

Private Sub Command1_Click()
Frame3.Visible = True
hastaneicin = 1
Text2 = ""
Text6 = ""
Text7 = ""
Text8 = ""
Text9 = ""
Text10 = ""
End Sub

```

```

Private Sub Command2_Click()
Frame3.Visible = True
şifreicin = 1
Text2 = ""
Text6 = ""
Text7 = ""
Text8 = ""
Text9 = ""
Text10 = ""
End Sub

```

```

Private Sub Command3_Click()
hastaneac "select * from HASTANEHAKKINDA"
If hastane.RecordCount > 0 Then
hastane("ABOUTHOSPITAL") = RichTextBox1.Text
If Text3 = "" Then
hastane("FIRSTFACE") = UCase(Trim("HOSPITAL AUTOMATION"))
Else
hastane("FIRSTFACE") = UCase(Trim(Text3))
End If
If Text4 = "" Then
hastane("SECONDFACE") = UCase(Trim("VERSION 1.0"))
Else
hastane("SECONDFACE") = UCase(Trim(Text4))
End If
If Text5 = "" Then

```



```

hastane("THIRDFACE") = UCase(Trim("{}"))
Else
hastane("THIRDFACE") = UCase(Trim(Text5))
End If
hastane.Update
Else
hastane.AddNew
hastane("ABOUTHOSPITAL") = RichTextBox1.Text
If Text3 = "" Then
hastane("FIRSTFACE") = UCase(Trim("HOSPITAL AUTOMATION"))
Else
hastane("FIRSTFACE") = UCase(Trim(Text3))
End If
If Text4 = "" Then
hastane("SECONDFACE") = UCase(Trim("VERSION 1.0"))
Else
hastane("SECONDFACE") = UCase(Trim(Text4))
End If
If Text5 = "" Then
hastane("THIRDFACE") = UCase(Trim("{}"))
Else
hastane("THIRDFACE") = UCase(Trim(Text5))
End If
hastane.Update
End If
hastane.execute "select * from HASTANEHAKKINDA"
MDIForm1.Rotater1.Faces(0).Caption = hastane("FIRSTFACE")
MDIForm1.Rotater1.Faces(1).Caption = hastane("SECONDFACE")
MDIForm1.Rotater1.Faces(2).Caption = hastane("THIRDFACE")
If hastane.RecordCount > 0 Then
Form8.RichTextBox1.Text = hastane("ABOUTHOSPITAL")
End If
Frame1.Visible = False
Form9.Visible = False
Frame4.Visible = False
End Sub

```

```

Private Sub Command4_Click()
If Text11 <> "" And Text6 <> "" And Text7 <> "" And Text8 <> "" Then
şifre.execute "select * from PASSWORDTABLOSU order by PASSWORDNO"
If şifre.RecordCount > 1 Then
şifre.MoveLast
If şifre("PASSWORD") = Text6 And şifre("ADMINISTERNAME") = Text2 Then
If Text7 = Text8 Then
şifre("ADMINISTERNAME") = Text11
şifre("PASSWORD") = Text7
şifre.Update
Else

```

```

MsgBox ("WRONG CONFIRMING NEW PASSWORD")
End If
Else
MsgBox ("WRONG PASSWORD or OLD ADMINISTER NAME")
End If
ElseIf şifre.RecordCount = 1 Then
If şifre("PASSWORD") = Text6 And şifre("ADMINISTERNAME") = Text2 Then
If Text7 = Text8 Then
şifre.AddNew
şifre("ADMINPROPERTY") = "kullanıcılarıçin"
şifre("PASSWORDNO") = "2"
şifre("ADMINISTERNAME") = Text11
şifre("PASSWORD") = Text7
şifre.Update
Else
MsgBox ("WRONG CONFIRMING NEW PASSWORD")
End If
Else
MsgBox ("WRONG PASSWORD or OLD ADMINISTER NAME")
End If
Else
If Text7 = Text8 Then
şifre.AddNew
şifre("ADMINPROPERTY") = "programcıyaizinver"
şifre("PASSWORDNO") = "1"
şifre("ADMINISTERNAME") = Text2
şifre("PASSWORD") = Text7
şifre.Update
Else
MsgBox ("WRONG CONFIRMING NEW PASSWORD")
End If
End If
Frame1.Visible = False
Text2 = ""
Text11 = ""
Text6 = ""
Text7 = ""
Text8 = ""
End If
Frame2.Visible = False
Frame4.Visible = False
End Sub
Private Sub Command5_Click()
şifreaç "select * from PASSWORDTABLOSU order by PASSWORDNO"
If şifre.RecordCount > 1 Then
şifre.MoveFirst
administeriçin = şifre("ADMINPROPERTY")
şifre.MoveLast

```

```

If şifre("ADMINISTERNAME") = Text9 And şifre("PASSWORD") = Text10 Or
administeriçin = Text9 Then
If administeriçin = Text10 Then
Frame4.Visible = True
Set DataGrid1.DataSource = şifre
End If
If hastaneicın = 1 Then
hastaneicın = 0
Frame1.Visible = True
Frame3.Visible = False
hastaneac "select * from HASTANEHAKKINDA"
If hastane.RecordCount > 0 Then
RichTextBox1.Text = hastane("ABOUTHOSPITAL")
End If
End If
If şifreicın = 1 Then
şifreicın = 0
Frame2.Visible = True
Frame3.Visible = False
End If
End If
ElseIf şifre.RecordCount = 1 Then
If şifre("ADMINISTERNAME") = Text9 And şifre("PASSWORD") = Text10 Or
şifre("ADMINPROPERTY") = Text9 Then
administeriçin = şifre("ADMINPROPERTY")
If administeriçin = Text10 Then
Frame4.Visible = True
Set DataGrid1.DataSource = şifre
End If
If hastaneicın = 1 Then
hastaneicın = 0
Frame1.Visible = True
Frame3.Visible = False
If hastane.RecordCount > 0 Then
RichTextBox1.Text = hastane("ABOUTHOSPITAL")
End If
End If
If şifreicın = 1 Then
şifreicın = 0
Frame2.Visible = True
Frame3.Visible = False
End If
End If
Else
Frame2.Visible = True
Frame3.Visible = False
End If
End Sub

```



```
Private Sub Command6_Click()
Frame4.Visible = False
End Sub
```

```
Private Sub Form_Load()
Frame1.Visible = False
Frame2.Visible = False
Frame3.Visible = False
Frame4.Visible = False
Form9.Top = 0
Form9.Left = Screen.Width / 2
End Sub
```

```
Private Sub Form_Unload(Cancel As Integer)
Frame1.Visible = False
Frame2.Visible = False
Frame3.Visible = False
Frame4.Visible = False
Form10.Visible = False
End Sub
```

```
Private Sub KDCButton1_Click()
Frame3.Visible = True
hastaneicin = 1
Text2 = ""
Text6 = ""
Text7 = ""
Text8 = ""
Text9 = ""
Text10 = ""
End Sub
```

```
Private Sub KDCButton2_Click()
Frame3.Visible = True
şifreicin = 1
Text2 = ""
Text6 = ""
Text7 = ""
Text8 = ""
Text9 = ""
Text10 = ""
End Sub
```

```

Private Sub KDCButton3_Click()
hastaneac "select * from HASTANEHAKKINDA"
If hastane.RecordCount > 0 Then
hastane("ABOUTHOSPITAL") = RichTextBox1.Text
If Text3 = "" Then
hastane("FIRSTFACE") = UCase(Trim("HOSPITAL AUTOMATION"))
Else
hastane("FIRSTFACE") = UCase(Trim(Text3))
End If
If Text4 = "" Then
hastane("SECONDFACE") = UCase(Trim("VERSION 1.0"))
Else
hastane("SECONDFACE") = UCase(Trim(Text4))
End If
If Text5 = "" Then
hastane("THIRDFACE") = UCase(Trim("{}"))
Else
hastane("THIRDFACE") = UCase(Trim(Text5))
End If
hastane.Update
Else
hastane.AddNew
hastane("ABOUTHOSPITAL") = RichTextBox1.Text
If Text3 = "" Then
hastane("FIRSTFACE") = UCase(Trim("HOSPITAL AUTOMATION"))
Else
hastane("FIRSTFACE") = UCase(Trim(Text3))
End If
If Text4 = "" Then
hastane("SECONDFACE") = UCase(Trim("VERSION 1.0"))
Else
hastane("SECONDFACE") = UCase(Trim(Text4))
End If
If Text5 = "" Then
hastane("THIRDFACE") = UCase(Trim("{}"))
Else
hastane("THIRDFACE") = UCase(Trim(Text5))
End If
hastane.Update
End If
hastaneac "select * from HASTANEHAKKINDA"
MDIForm1.Rotater1.Faces(0).Caption = hastane("FIRSTFACE")
MDIForm1.Rotater1.Faces(1).Caption = hastane("SECONDFACE")
MDIForm1.Rotater1.Faces(2).Caption = hastane("THIRDFACE")
If hastane.RecordCount > 0 Then
Form8.RichTextBox1.Text = hastane("ABOUTHOSPITAL")
End If
Frame1.Visible = False
Form9.Visible = False

```

```
Frame4.Visible = False
End Sub
```

```
Private Sub KDCButton4_Click()
If Text11 <> "" And Text6 <> "" And Text7 <> "" And Text8 <> "" Then
şifreaç "select * from PASSWORDTABLOSU order by PASSWORDNO"
If şifre.RecordCount > 1 Then
şifre.MoveLast
If şifre("PASSWORD") = Text6 And şifre("ADMINISTERNAME") = Text2 Then
If Text7 = Text8 Then
şifre("ADMINISTERNAME") = Text11
şifre("PASSWORD") = Text7
şifre.Update
Else
MsgBox ("WRONG CONFIRMING NEW PASSWORD")
End If
Else
MsgBox ("WRONG PASSWORD or OLD ADMINISTER NAME")
End If
ElseIf şifre.RecordCount = 1 Then
If şifre("PASSWORD") = Text6 And şifre("ADMINISTERNAME") = Text2 Then
If Text7 = Text8 Then
şifre.AddNew
şifre("ADMINPROPERTY") = "kullanıcılarıçin"
şifre("PASSWORDNO") = "2"
şifre("ADMINISTERNAME") = Text11
şifre("PASSWORD") = Text7
şifre.Update
Else
MsgBox ("WRONG CONFIRMING NEW PASSWORD")
End If
Else
MsgBox ("WRONG PASSWORD or OLD ADMINISTER NAME")
End If
Else
If Text7 = Text8 Then
şifre.AddNew
şifre("ADMINPROPERTY") = "programcıyaizinver"
şifre("PASSWORDNO") = "1"
şifre("ADMINISTERNAME") = Text2
şifre("PASSWORD") = Text7
şifre.Update
Else
MsgBox ("WRONG CONFIRMING NEW PASSWORD")
End If
End If
Frame1.Visible = False
Frame2.Visible = False
```



```

Text2 = ""
Text11 = ""
Text6 = ""
Text7 = ""
Text8 = ""
End If
Frame4.Visible = False
End Sub

```

```

Private Sub KDCButton5_Click()
şifreac "select * from PASSWORDTABLOSU order by PASSWORDNO"
If şifre.RecordCount > 1 Then
şifre.MoveFirst
administeriçin = şifre("ADMINPROPERTY")
şifre.MoveLast
If şifre("ADMINISTERNAME") = Text9 And şifre("PASSWORD") = Text10 Or
administeriçin = Text9 Then
If administeriçin = Text10 Then
Form10.Show
Frame4.Visible = True
Set DataGrid1.DataSource = şifre
End If
If hastaneicın = 1 Then
hastaneicın = 0
Frame1.Visible = True
Frame3.Visible = False
hastaneac "select * from HASTANEHAKKINDA"
If hastane.RecordCount > 0 Then
RichTextBox1.Text = hastane("ABOUTHOSPITAL")
End If
End If
If şifreicın = 1 Then
şifreicın = 0
Frame2.Visible = True
Frame3.Visible = False
End If
End If
ElseIf şifre.RecordCount = 1 Then
If şifre("ADMINISTERNAME") = Text9 And şifre("PASSWORD") = Text10 Or
şifre("ADMINPROPERTY") = Text9 Then
administeriçin = şifre("ADMINPROPERTY")
If administeriçin = Text10 Then
Frame4.Visible = True
Set DataGrid1.DataSource = şifre
End If
If hastaneicın = 1 Then
hastaneicın = 0
Frame1.Visible = True

```

```

Frame3.Visible = False
If hastane.RecordCount > 0 Then
    RichTextBox1.Text = hastane("ABOUTHOSPITAL")
End If
End If
If şifreicin = 1 Then
    şifreicin = 0
    Frame2.Visible = True
    Frame3.Visible = False
End If
End If
Else
    Frame2.Visible = True
    Frame3.Visible = False
End If
End Sub

```

```

Private Sub Text9_Change()
    If Len(Text9) >= 9 Then
        If UCase(Mid(Text9, 1, 9)) = UCase("programcı") Then
            Text9.PasswordChar = "*"
        End If
    Else
        Text9.PasswordChar = ""
    End If
End Sub

```

- Codes of "database address" form which is used to connect to database when place of database has been changed or lost.

```

Private Sub Form_Load()
    Form10.Left = Screen.Width / 3
    Form10.Top = Screen.Height / 3
    Frame1.Visible = False
    ProgressBar1.Min = 0
    ProgressBar1.Max = 51
End Sub

```

```

Private Sub KDCButton1_Click()
    If Not Text1 = "" Then
        SaveSetting "hospital", "database", "databaseyer", Text1
        bulundu = Dir(Text1, vbNormal)
        If bulundu <> "" Then
            Timer1.Enabled = True
            Timer1.Interval = 100
        End If
    End If
End Sub

```

```

Else
MsgBox ("Database could not be found...")
End If
End If
End Sub

```

```

Private Sub KDCButton2_Click()
Form10.Visible = False
End Sub

```

```

Private Sub Timer1_Timer()
Static i As Integer
If i = 9 Then
Frame1.Visible = True
ProgressBar1.Value = 0
Timer2.Enabled = True
Timer2.Interval = 100
Timer1.Enabled = False
End If
i = i + 1
End Sub

```

```

Private Sub Timer2_Timer()
Static zaman As Long
If zaman = 50 Then
Frame1.Visible = False
Timer2.Enabled = False
End
End If
zaman = zaman + 1
zamn = Str(zaman)
ProgressBar1.Value = Val(zamn)
End Sub

```

Codes of Database Module

```

Option Explicit
Public DosyaAdı As String
Public Bağlantı As Connection
Public kayıt As Recordset
Public kimlik As Recordset
Public tarih As Recordset
Public bul As Recordset
Public hesap As Recordset
Public hakkında As Recordset
Public bölüm As Recordset

```


Public sigorta As Recordset
Public yatiscikis As Recordset
Public yatakbolum As Recordset
Public doktorunhastalari As Recordset
Public doktor As Recordset
Public rapor As Recordset
Public hastane As Recordset
Public sifre As Recordset
Public ilac As Recordset

Public Function VeriTabaniAc() As Boolean
On Local Error GoTo hata
DosyaAdi = DataBaseYer
Set Baglanti = New Connection
Baglanti.Open "Provider=Microsoft.Jet.OLEDB.4.0;Data Source=" & DosyaAdi &
";Persist Security Info=False"
VeriTabaniAc = True
hata:
End Function

Public Function VeriTabaniKapat() As Boolean
If yerbulunamadi <> 1 Then
Baglanti.Close
Set Baglanti = Nothing
Set ilac = Nothing
Set rapor = Nothing
Set kayit = Nothing
Set hakkında = Nothing
Set bolum = Nothing
Set sigorta = Nothing
Set kimlik = Nothing
Set tarih = Nothing
Set hastane = Nothing
Set sifre = Nothing
Set bul = Nothing
Set yatiscikis = Nothing
Set yatakbolum = Nothing
Set doktorunhastalari = Nothing
Set doktor = Nothing
Else
End
End If
End Function

Public Sub KayitAc(sql As String)
Set kayit = New Recordset

```
kayıt.CursorLocation = adUseClient  
kayıt.Open sql, Bağlantı, adOpenKeyset, adLockOptimistic  
End Sub
```

```
Public Sub hakkında Aç(sql As String)  
    Set hakkında = New Recordset  
    hakkında.CursorLocation = adUseClient  
    hakkında.Open sql, Bağlantı, adOpenKeyset, adLockOptimistic  
End Sub
```

```
Public Sub bölüm Aç(sql As String)  
    Set bölüm = New Recordset  
    bölüm.CursorLocation = adUseClient  
    bölüm.Open sql, Bağlantı, adOpenKeyset, adLockOptimistic  
End Sub
```

```
Public Sub sigorta Aç(sql As String)  
    Set sigorta = New Recordset  
    sigorta.CursorLocation = adUseClient  
    sigorta.Open sql, Bağlantı, adOpenKeyset, adLockOptimistic  
End Sub
```

```
Public Sub bul Aç(sql As String)  
    Set bul = New Recordset  
    bul.CursorLocation = adUseClient  
    bul.Open sql, Bağlantı, adOpenKeyset, adLockOptimistic  
End Sub
```

```
Public Sub kimlik Aç(sql As String)  
    Set kimlik = New Recordset  
    kimlik.CursorLocation = adUseClient  
    kimlik.Open sql, Bağlantı, adOpenKeyset, adLockOptimistic  
End Sub
```

```
Public Sub tarih Aç(sql As String)  
    Set tarih = New Recordset  
    tarih.CursorLocation = adUseClient  
    tarih.Open sql, Bağlantı, adOpenKeyset, adLockOptimistic  
End Sub
```

```
Public Sub yatiscıkıs Aç(sql As String)  
    Set yatiscıkıs = New Recordset
```

```
yatis cikis.CursorLocation = adUseClient  
yatis cikis.Open sql, Baglanti, adOpenKeyset, adLockOptimistic  
End Sub
```

```
Public Sub yatak bölüm Aç(sql As String)  
    Set yatak bölüm = New Recordset  
    yatak bölüm.CursorLocation = adUseClient  
    yatak bölüm.Open sql, Baglanti, adOpenKeyset, adLockOptimistic  
End Sub
```

```
Public Sub doktorun hastaları Aç(sql As String)  
    Set doktorun hastaları = New Recordset  
    doktorun hastaları.CursorLocation = adUseClient  
    doktorun hastaları.Open sql, Baglanti, adOpenKeyset, adLockOptimistic  
End Sub
```

```
Public Sub doktor Aç(sql As String)  
    Set doktor = New Recordset  
    doktor.CursorLocation = adUseClient  
    doktor.Open sql, Baglanti, adOpenKeyset, adLockOptimistic  
End Sub
```

```
Public Sub rapor Aç(sql As String)  
    Set rapor = New Recordset  
    rapor.CursorLocation = adUseClient  
    rapor.Open sql, Baglanti, adOpenKeyset, adLockOptimistic  
End Sub
```

```
Public Sub hastane Aç(sql As String)  
    Set hastane = New Recordset  
    hastane.CursorLocation = adUseClient  
    hastane.Open sql, Baglanti, adOpenKeyset, adLockOptimistic  
End Sub
```

```
Public Sub şifre Aç(sql As String)  
    Set şifre = New Recordset  
    şifre.CursorLocation = adUseClient  
    şifre.Open sql, Baglanti, adOpenKeyset, adLockOptimistic  
End Sub
```

```
Public Sub ilac Aç(sql As String)  
    Set ilac = New Recordset
```



```
ilac.CursorLocation = adUseClient
ilac.Open sql, Bağlantı, adOpenKeyset, adLockOptimistic
End Sub
```

Codes of Globals Menu

```
Global DataBaseYer As String
Global yenidoktor As Integer
Global dogrudeger As Integer
Global yerbulunamadı As Integer
Global doktorupdateistek As Integer
Global tarihtenokundu As Integer
Global form1doktoristek As Integer
Global form1istek As Integer
Global form2istek As Integer
Global check2onay As Integer
Global check3onay As Integer
Global tarihdegisti As Integer
Global updateistek As Integer
Global yenisigorta As Integer
Global numara As String
Global ad As String
Global doktoriçinbölüm As String
Global unvan As String
Global BOLUMADI As String
Global YATAKNO As String
Global YATAKDEGIS As Integer
Global TEXTLER As Integer
Global yatakistek As Integer
Global form1bölümistek As Integer
Global yatışgüncellenmeli As Integer
Global çıkışgüncellenmeli As Integer
Global endmtinbed As Integer
Global mtinbed As Integer
Global yenibölüm As Integer
Global blmupdateistek As Integer
Global bulmaformu As Integer
Global bölümdekiyatakiptal As String
Global degisecekbölümadı As String
Global text18bosdegil As String
Global hastane için As Integer
Global şifre için As Integer
```