

# NEAR EAST UNIVERSITY



FACULTY OF ECONOMICS AND ADMINISTRATIVE  
SCIENCES

DEPARTMENT OF COMPUTER INFORMATION SYSTEMS

2008/2009

CIS 400

(GRADUATION PROJECT)

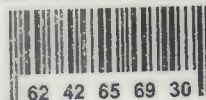
ELECTRONICS SHOP

Submitted To : Department Of Computer Information Systems

Submitted By : Adil DEMİRYERİ

Student Number : 20032903

Lefkosa ,  
2009



NEU

# CONTENTS



I.ACKNOWLEDGEMENTS .....	1
II.ABSTRACT .....	2
III.INTRODUCTION .....	3
IV.DESIGN OF THE SYSTEM .....	5
-Explanation .....	5
-Database Design .....	10
-Data Flow Diagram .....	12
V. USER MANUAL .....	19
-User Guidless .....	19
-User Flow Charts .....	28
VI. REFERENCES.....	41

## II. ABSTRACT

### I. ACKNOWLEDGEMENTS

Generally Electronics shop have a very big problem. This problem can be explained as "too much time spend in record of the transactions". Most commonly feature of this project is easy transaction processing. I achieved this purpose by providing business keyboard usage.

This project will be prepared by me, with advise of Asist.Prof.Dr. Yalçın AKÇALI and Asist.Prof.Dr. Nadire Çavuş to be submitted to Department Of Computer Information Systems.

I have to thank my family for their support in my educational life in Near East University.

Also I must thank to my best friends for helping me during my project process.



## II.ABSTRACT

Generally Electronics shop have a very big problem. This problem can be explained as "too much time spend in record of the transactions". Most commonly feature of this project is easy transaction processing. I achieved this purpose by providing minimum keyboard usage.

Another thing I have to focus; I plan to sell this software to the other companies in the same sector. After the acceptance of this project the full version will be sent again and will be marketed to all the electronics shops.

### III. INTRODUCTION

The field of Information Technology is an exciting and ever-changing field. If you are a life-long learner and want new challenges everyday, it's always a good idea to think of the program you want to create in terms of its solution. In order to do this, you must have a pretty solid understanding of the programming language that you'll be working in and what you can do with it. Then you should sort out what exactly you're trying to accomplish. What do you want your program to do?

What problem is it solving? Next, divide the program into its various components. Then decide how those components will fit together to execute the program. Once all these have sorted out, you can write each part of the program and put them together. This is the correct way to program.

I used Delphi Programming Language and the Microsoft Access Database to prepare this project.

I used the Delphi language because I believe that language of Delphi is more useful and beneficial and I'm good this language.



## V DESIGN OF THE SYSTEM

### Processes

#### 1. Customer Processes

Register customer subprocess (New customer registration)

Update customer subprocess (Existing customer update)

#### 2. Sale Process

Product sale subprocess (Making order and confirming)

Cancel Sale subprocess (Cancelling the sales)

#### 3. Stock Process

Stock query subprocess (Checking the available stocks)

Update stocks subprocess (Changing the stock information)

#### 4. Reports Process

4.1 Sale reports subprocess (Total sales report)

4.2 Income reports subprocess (Balance of sales and payments)

4.3 Payments report subprocess (Payments list)

#### 5. Supplier Process

5.1 Register & Update Supplier subprocess (Registering and changin supplier information)

5.2 Payments subprocess (Recording the payments to the system)

The recommended requirements of the system are as follows:

• Intel Pentium IV processor 3.0

• 800 MHz

• 1 GB DDR RAM

• 70 GB HDD

• 256 MB Graphic Card

## **V.DESIGN OF THE SYSTEM**

### **EXPLANATION :**

**The minimum requirements of the system are as follows;**

- ✓ Intel Pentium IV processor 2.420
- ✓ 533 Mhz
- ✓ 512 MB DDR RAM
- ✓ 80 GB HDD
- ✓ 14" Monitor
- ✓ Microsoft Windows XP
- ✓ CD-ROM 52xmax
- ✓ 256 MB Graphic Card
- ✓ Modem

**The recommended requirements of the system are as follows;**

- ✓ Intel Pentium IV processor 3.0
- ✓ 800 Mhz
- ✓ 1 GB DDR RAM
- ✓ 120 GB HDD
- ✓ 256 MB Graphic Card

- ✓ 17" Monitor
- ✓ Microsoft Windows XP Professional
- ✓ CD-ROM 52xmax
- ✓ Modem

In this project I used the Borland's Delphi as programming technology because of the Delphi's easy Object-Oriented coding characteristic. And I used Microsoft Access as database. Because Access's performance is very good when used on a single computer.

## **1) PROJECT IDENTIFICATION AND SELECTION**

### **THE AIM OF THE PROJECT :**

The aim of the system is to record the daily processes easier and faster.

The system I have proposed will center on making the daily tasks of the managers and the individual employees completely automated. This will entail using modern hardware, software or external devices in order to give to service the advantage and complete customer satisfaction.

### **THE PROJECT BOUNDRIES**

- 1) System can work on a single PC.



- 2) System will not connect to internet so can not update itself
- 3) System can not communicate with the suppliers because of being an offline system.
- 4) Microsoft Access doesn't support multiple users at the same time.  
So the users of this system can not use the same tables.

## RESOURCE LIMITS

- 1) System has to be able to scan bar codes for stock and purchase processes. A bar code scanner is required but I don't have.
- 2) The project will have a special interface using flash extensions.
- 5) Program will start with a login screen and only the authorized user may have the right to use program.

## 2) PROJECT INITIATION AND PLANNING

### TECHNICAL FEASIBILITY

Necessary Hardwares :

- 1 computer for the manager (necessary)

- 1 computer for the repairer. (suggested)
- At least 1 printer (laser printer with coloured cartridge)

## **OPERATIONAL FEASIBILITY**

The manager and the other employees who will use the system must have at least low level computer using skill for being educated about the system.

## **ECONOMICAL FEASIBILITY**

System can replace an employee's work on like basic accounting, stock controlling, statistical report preparing, etc.. So the owner can save at least one employees' salary monthly. This system will cost for the owner about 1500 at total. This cost includes a computer, a bar code scanner, a printer with coloured cartridge.

## **5) ANALYSIS**

### **THE REQUIREMENT DETERMINATION**

The requirements made by the owner as follows:

- To increase the speed of operations
- To provide easy and quick Access
- System security

(the users cannot be able to see each others password)

- Recording of the repairs daily

## **EXISTING SYSTEM'S CAPABILITIES**

- The Electronics Shop existing system is based on manual.

- The Inventory is written on the ledger notebooks and the stock is being calculated by using this notebook

- A customer card is held for Customer Relationship Management

## **NEW SYSTEM'S PROVIDENCES**

- New system will help to the user easy and quick search of the information about all the data.

- A worker can easily record repair informations.

- All the transactions by the customers will be stored in the database.

- Stocks and the sale reports (by graphic) will be prepared with one click



## **DATABASE TABLES**

### **1. Customers :**

All the customer knowledge will be stored here.

### **2. Orders :**

The general order knowledge (like customer information and order date)

### **3. Order Details**

The details of an order will be saved here (for example stock code, purchase quantity, etc..)

### **4. Payments**

The company's payments after purchase will be recorded to this table

### **5. Stocks**

The products which company sells are recorded here part by part

### **6. Suppliers**

The companies which we purchase our stocks are stored here

db1 : Veritabanı (Access 2000 dosya biçimi)

Aç... Tasarla Yeni | X | D | a- a- a- a- a-

Nesneler

Tablolar

Sorgular

Formlar

Raporlar

Sayfalar

Makrolar

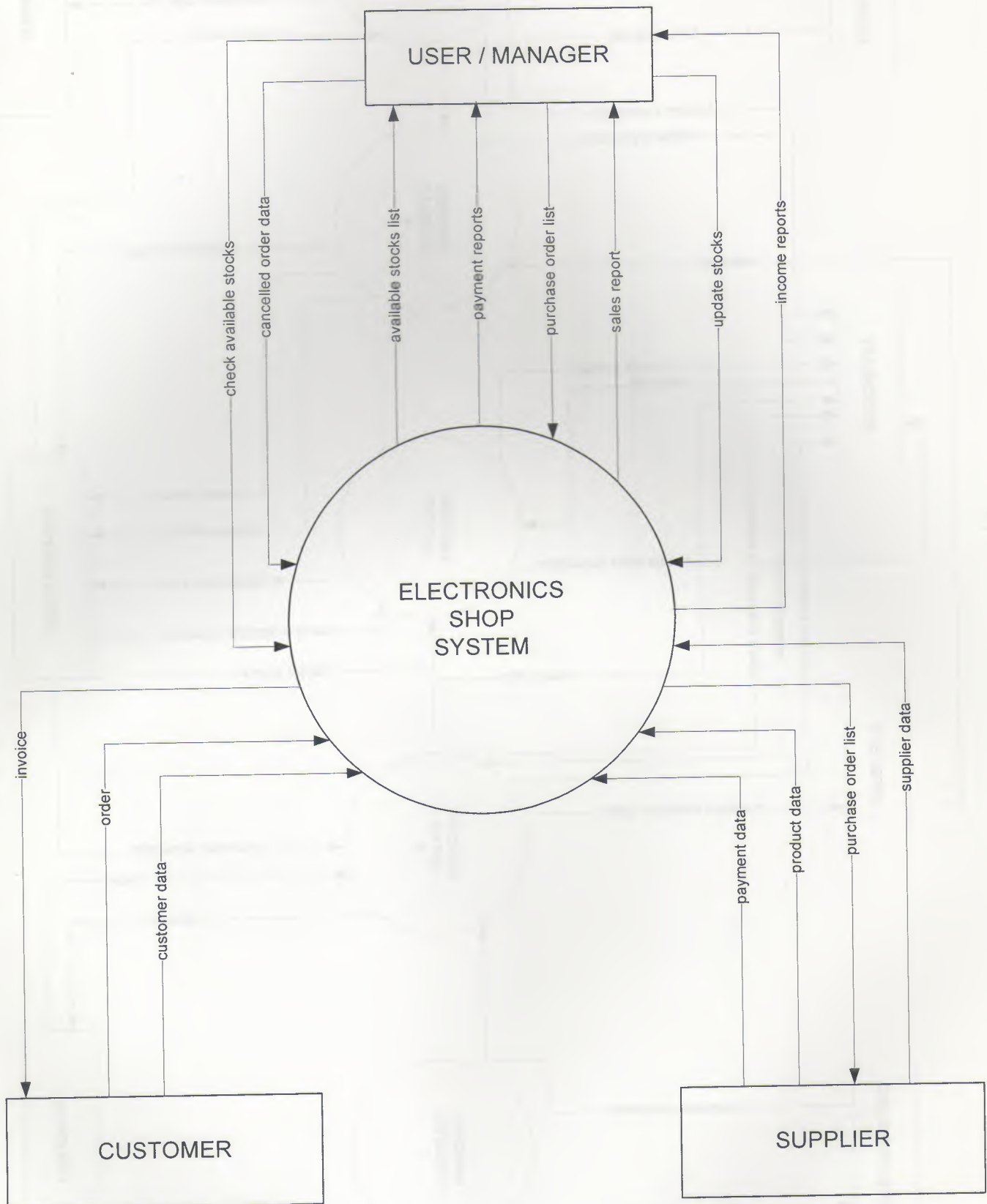
Modüller

Gruplar

Sık Kull...

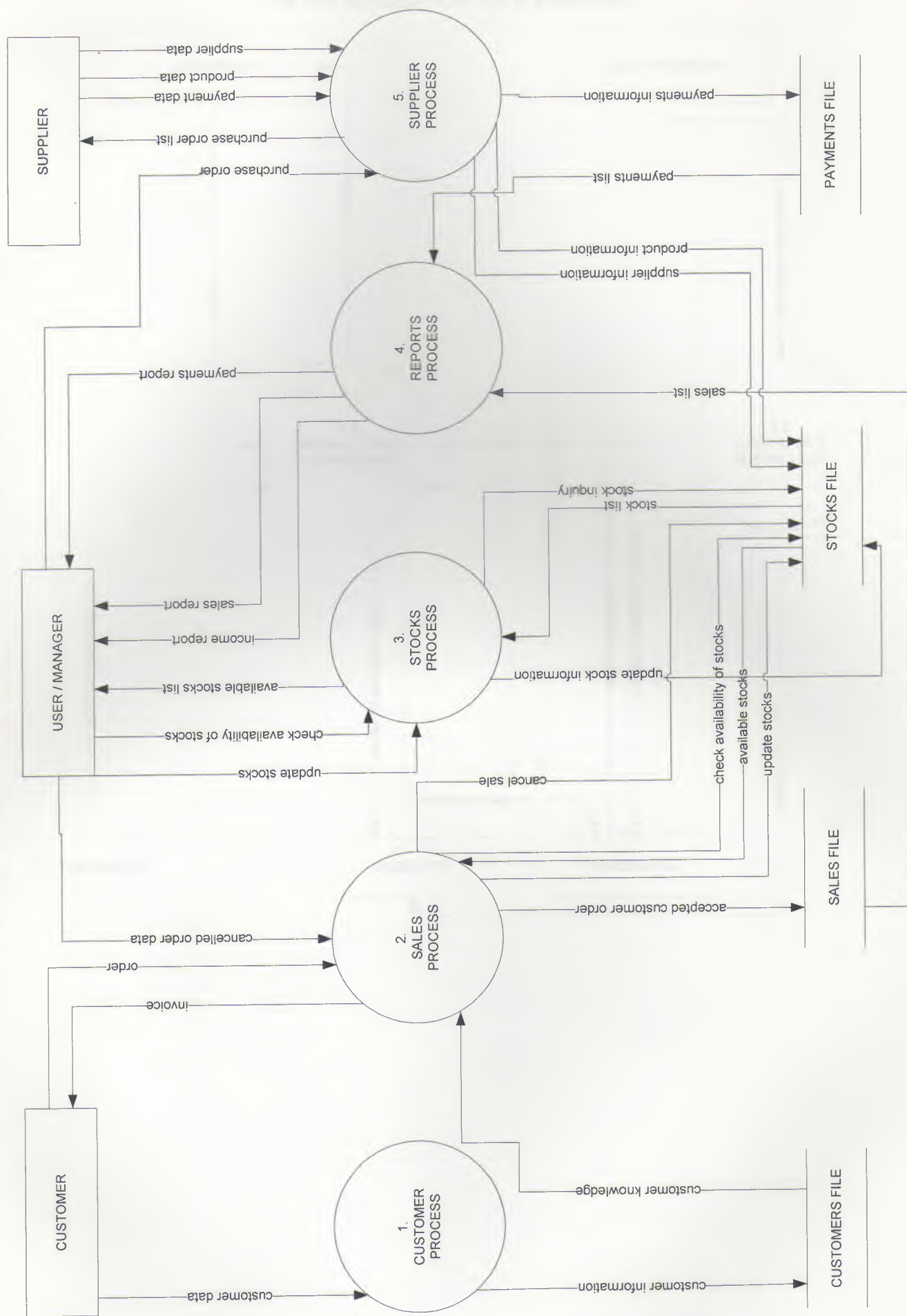
Tasarım görünümünde tablo oluşturun  
Sihirbazı kullanarak tablo oluşturun  
Veriler girilerek tablo oluşturun  
Customers  
OrderDetails  
Orders  
Payments  
Stocks  
Suppliers

# CONTEXT DIAGRAM OF ELECTRONICS SHOP SYSTEM

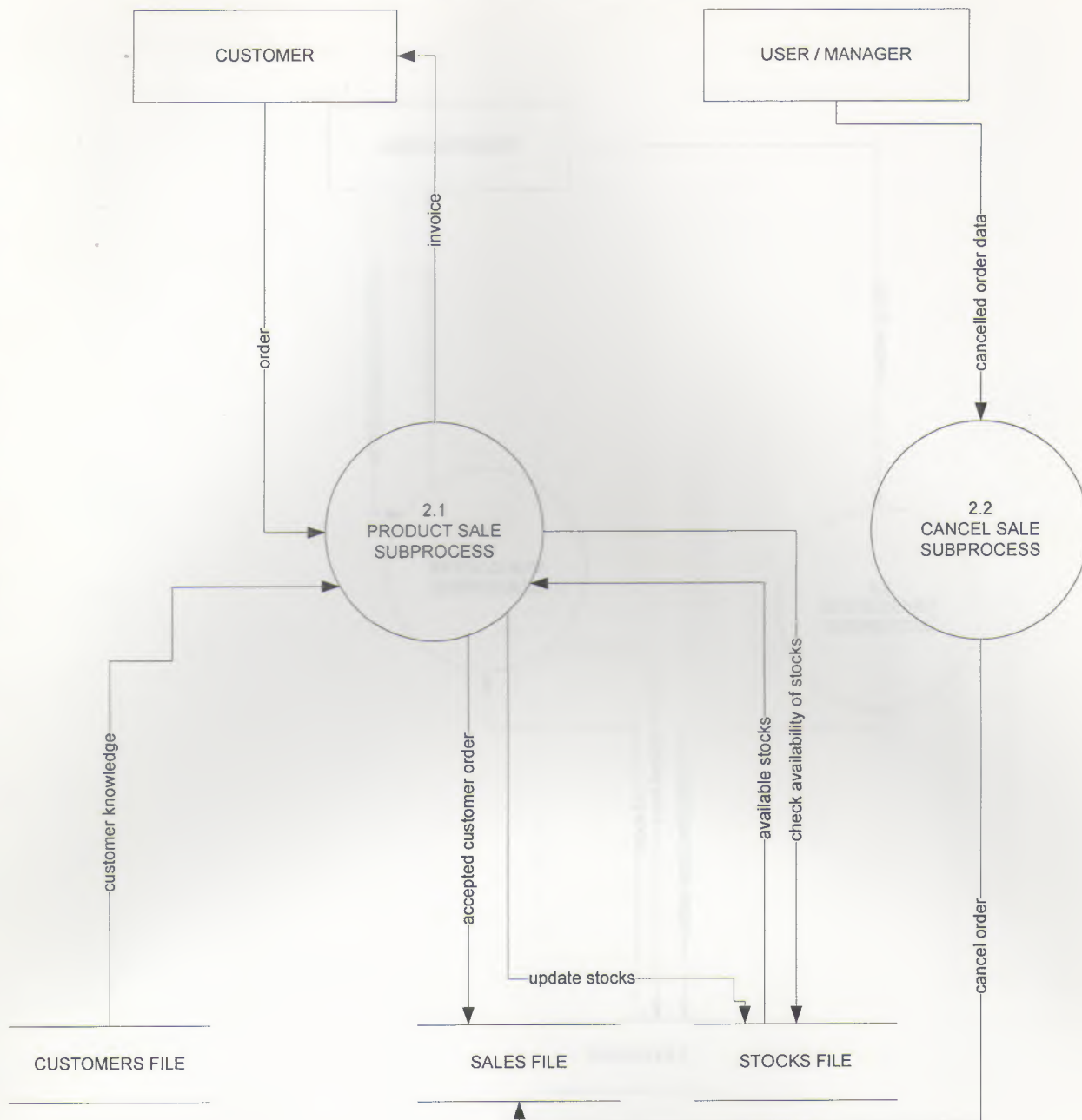




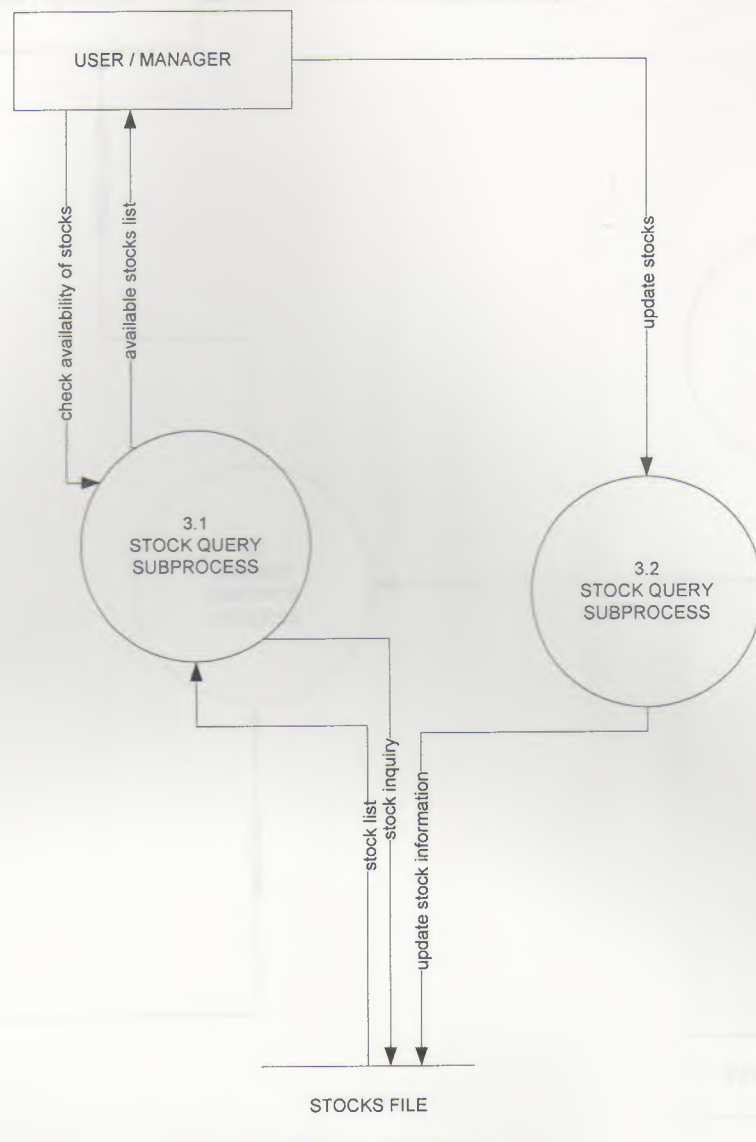
# TOP LEVEL DIAGRAM OF ELECTRONICS SHOP SYSTEM



# DETAILED DFD FOR SALE PROCESS

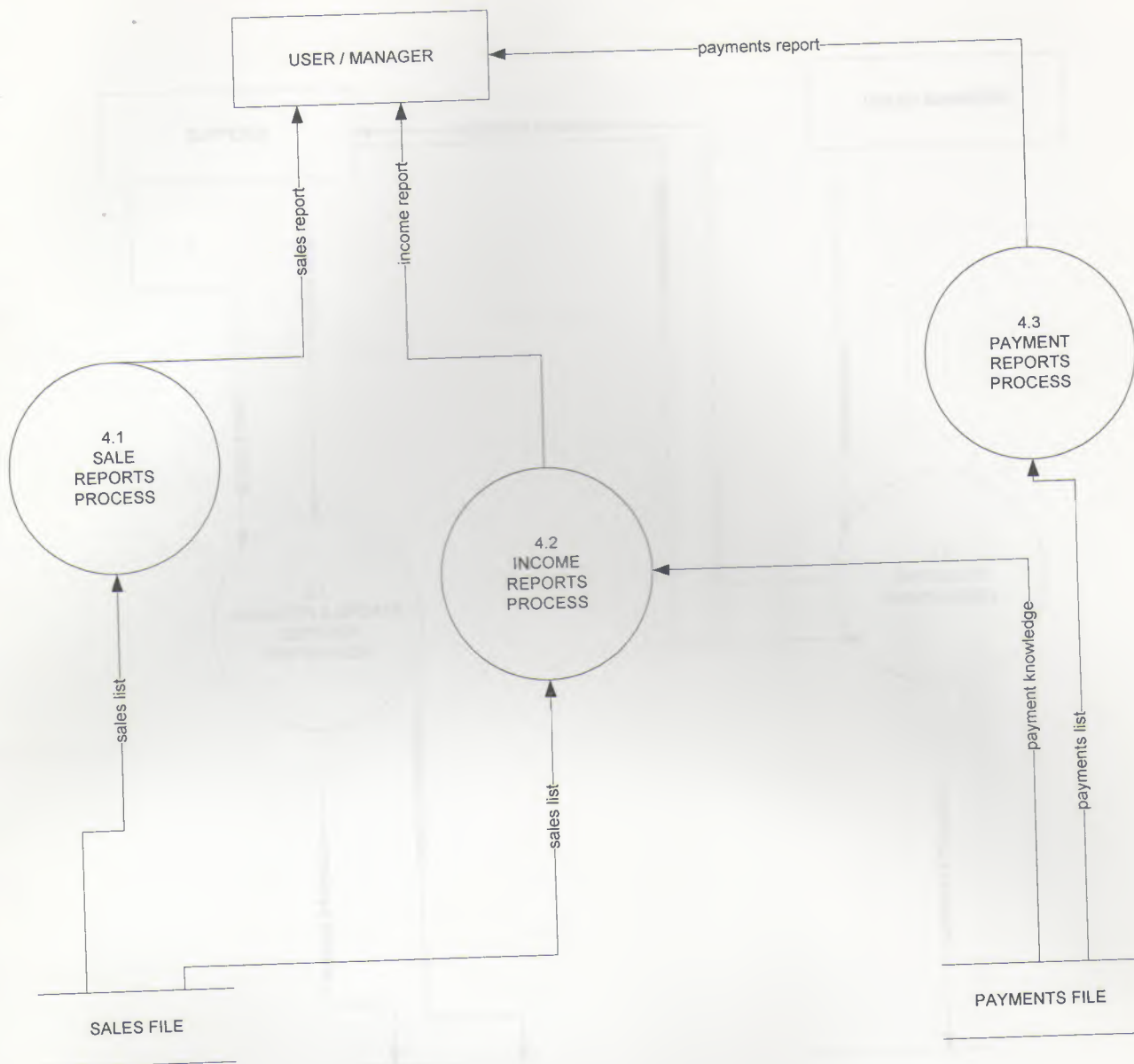


## DETAILED DFD FOR STOCK PROCESS

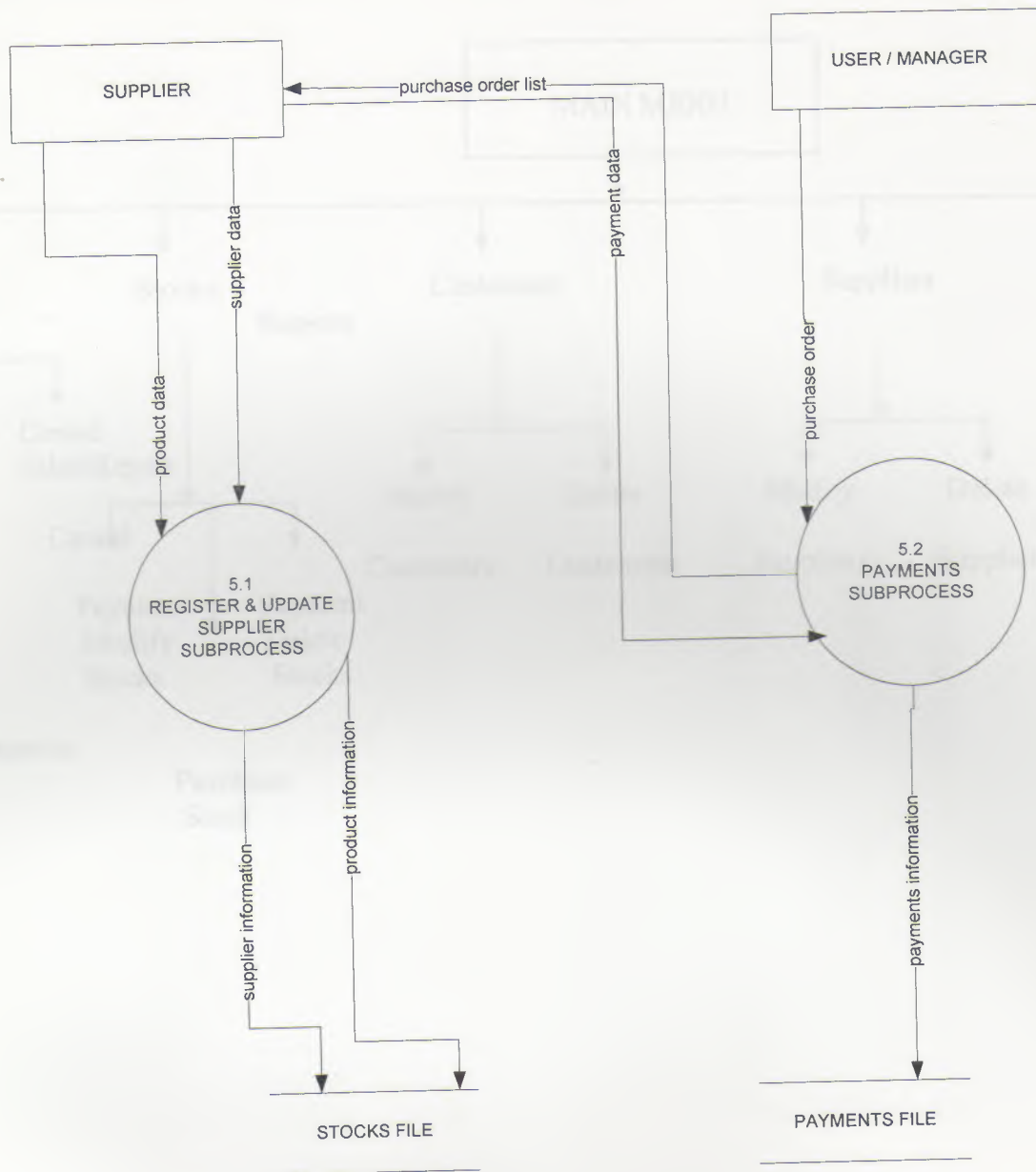




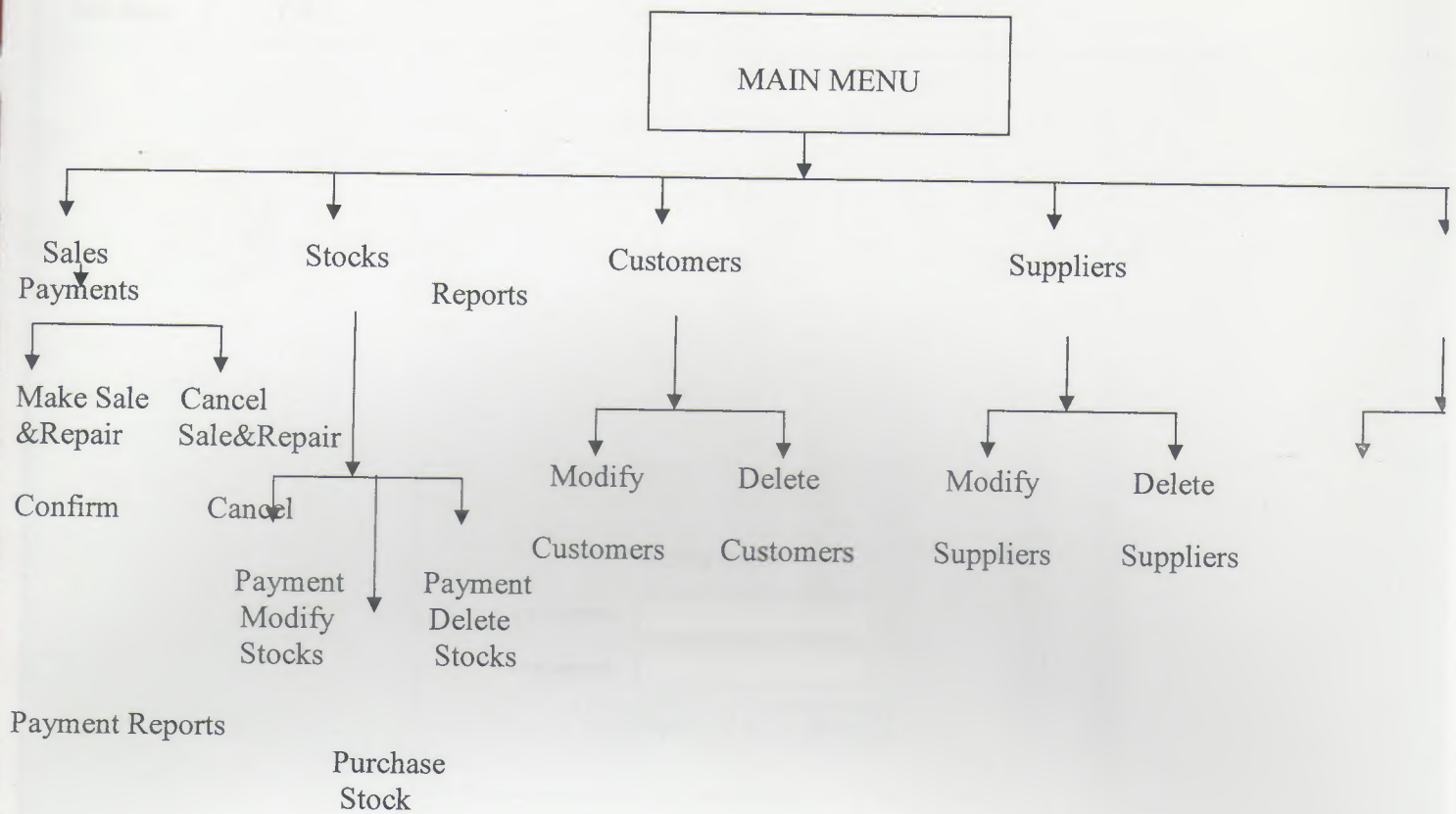
## DETAILED DFD FOR REPORTS PROCESS



## DETAILED DFD FOR SUPPLIER PROCESS



## SYSTEM BLOCK DIAGRAM





## USER MANUAL

= Electronics Shop (Coded and Designed by Adil Demiryeri)

Main Menu

Exit

Security Check

Username :

Password :

Clear

OK

SALE

= Electronics Shop (Coded and Designed by Adil Demiryeri)

Main Menu

Sales

Stocks

Customers

Suppliers

Payments

Reports

Exit

User Login Successful

Welcome Adil Demiryeri

Now you can use the menu on the left.

# SALE

In this part same transactions were made about sales.

= Electronics Shop (Coded and Designed by Adil Demiryeri)

Main Menu Sales Stocks Customers Suppliers Payments Reports Exit

Name  New Customer

nadire	çavuş
ahmet	özbek
reyhan	gitmiş
serhat	demiryeri
adil	demiryeri
ayla	salla

ProductName

Plasma TV	Samsung
Owen	Pioneer
Fridge	Samsung
37" Plasma	Beko
40" LCD	Samsung
washing machine	Beko
dolap	Beko

Citizenship ID : 7126371

Quantity Common Price Quantity Unit Price Add To List

7 2400 1 0,00 YTL

OrderID	ProductID	UnitPrice	Quantity	TotalPrice	Customer
15	Fridge	1000	2	2000	esin sollu
16	Plasma TV	2650	2	5300	ayla salla
17	Owen	1450	3	4350	adil demiryeri
18	Plasma TV	3000	2	6000	ahmet özbek
19	Plasma TV	1500	22	33000	ahmet özbek
20	40" LCD	1500	1	1500	reyhan gitmiş
21	40" LCD	150	5	750	reyhan gitmiş
22	washing machine	100	1	100	ayla salla
23	Owen	100	3	300	ahmet özbek



## CUSTOMER

In this part same transactions were made about customer.

= Electronics Shop (Coded and Designed by Adil Demiryeri)

Main Menu Sales Stocks Customers Suppliers Payments Reports Exit

Customer ID 3

Name nadire

Surname çavuş

Address jhsjdh

City lefkoşa

Phone 2236464

GSM 8337102

Citizenship ID 7126371

Search Name

Name	Surname
▶ nadire	çavuş
ahmet	özbek
reyhan	gitmiş
serhat	demiryeri
adil	demiryeri
ayla	salla

## SUPPLIER

In this part same transactions were made about supplier.

= Electronics Shop (Coded and Designed by Adil Demiryeri)

Main Menu

Sales

Stocks

Customers

Suppliers

Payments

Reports

Exit

Supplier ID 2

Company Name

Samsung

Contact Name

deniz korkut

Contact Title

sahibi

Address

City

italya

Phone

12312

Fax

123123

Search CompanyName

CompanyName

ContactName

Pioneer

Ahmet Hamdi

► Samsung

deniz korkut

arçelik

adnan tanış

arçelik

mustafa

arçelik

mustafa

adadsas

asdas

asda

asda

sdasdasd

fd

sunay

vadat

◀ ▶

▶

◀

◀

▶

▶

+

-

▲

■

■

■

## PAYMENT

In this part same transactions were made about payment.

= Electronics Shop (Coded and Designed by Adil Demiryeri)

Main Menu   Sales   Stocks   Customers   Suppliers   **Payments**   Reports   Exit

Payment ID   1

Payment Type   Cash

Description   telefon bill

Amount   200,00 YTL

Payment Date   13.01.2009

▶ ◀ ▶ ◀ + - ▶ ◀ ▶ ◀ ▶ ◀ ▶ ◀ ▶ ◀ ▶

PaymentID	PaymentTy	Description	PaymentDate	Amount
▶ 1	Cash	telefon bill	13.01.2009	200
2	Cash	Rent	29.06.2007	1200
3	Credit Car	Electricity bill	30.11.2008	1000



## REPORTS

In this part the report will be perp which is desired.

Electronics Shop (Coded and Designed by Adil Demiryeri)

Main Menu	Sales	Stocks	Customers	Suppliers	Payments	Reports	Exit
-----------	-------	--------	-----------	-----------	----------	---------	------

Select dates

13.01.2009	<input type="text"/>	13.01.2009	<input type="text"/>
------------	----------------------	------------	----------------------

Sales	Stocks
Payments	Customers
Income Statement	Suppliers

## STOCK

In this part the report will be print which is desired.

## EXIT

This part was made for closing the program

= Electronics Shop (Coded and Designed by Adil Demiryeri)

Main Menu	Sales	Stocks	Customers	Suppliers	Payments	Reports	Exit
-----------	-------	--------	-----------	-----------	----------	---------	------

Exit

## STOCK

In this part the report will be perp which is desired.

= Electronics Shop (Coded and Designed by Adil Demiryeri)

Main Menu

Sales

Stocks

Customers

Suppliers

Payments

Reports

Exit

Product ID 1

Product Name Plasma TV

Supplier Samsung

Unit Price 2.400,00 YTL

Units in Stock 7

Reorder Level 1

Purchase

Search

ProductName

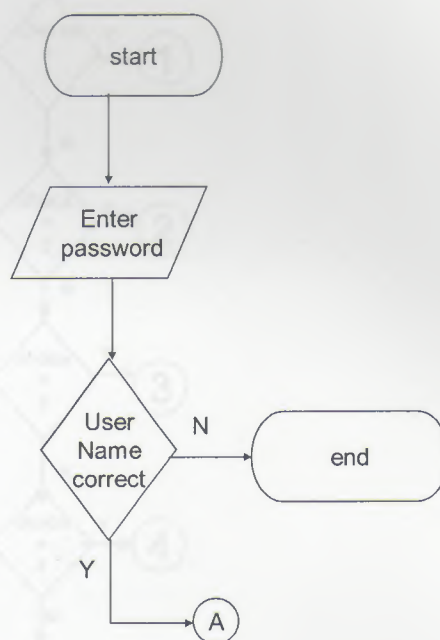
ProductName	UnitPrice	UnitsInStock	ReorderLevel
Plasma TV	2400	7	1
Owen	1400	3	1
Fridge	990	2	1
37" Plasma	2000	13	0
40" LCD	3200	0	0
washing machine	800	13	0
dolap	130	38	1
firin	0	0	0



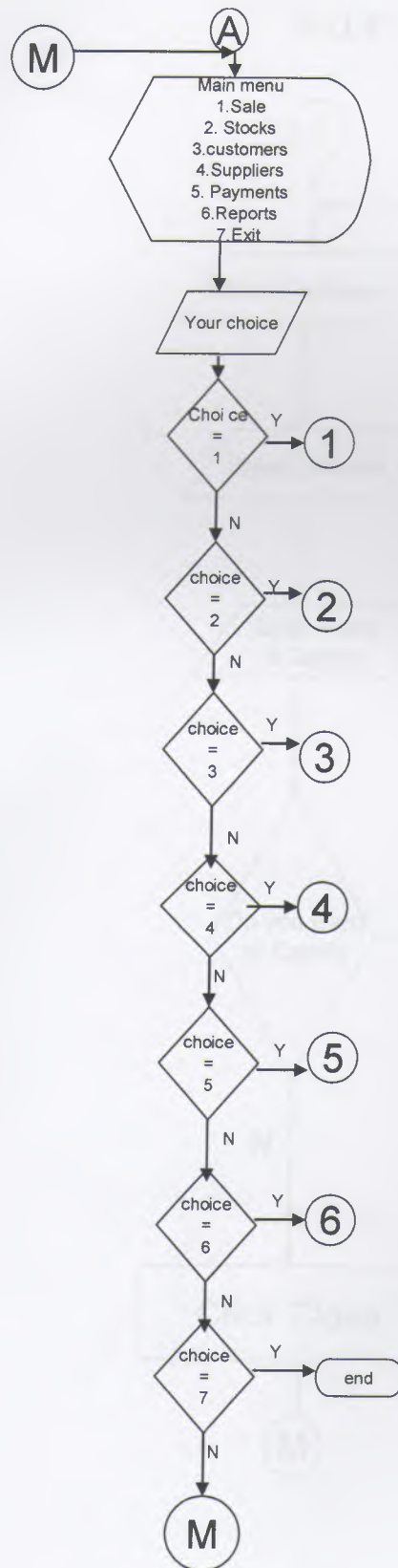
MAIN MENU

**FLOWCHARTS**

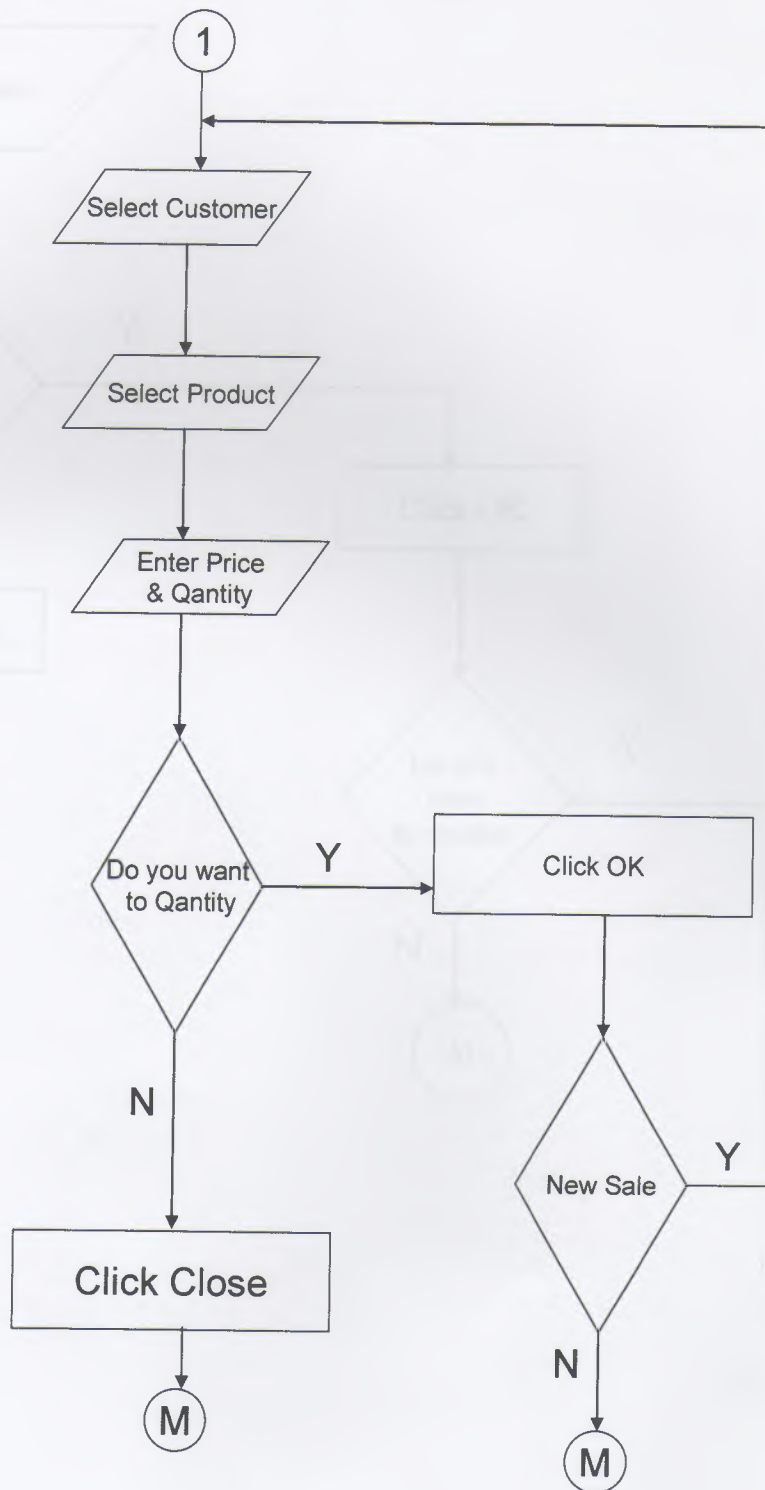
**PASSWORD ENTRY**



## MAIN MENU

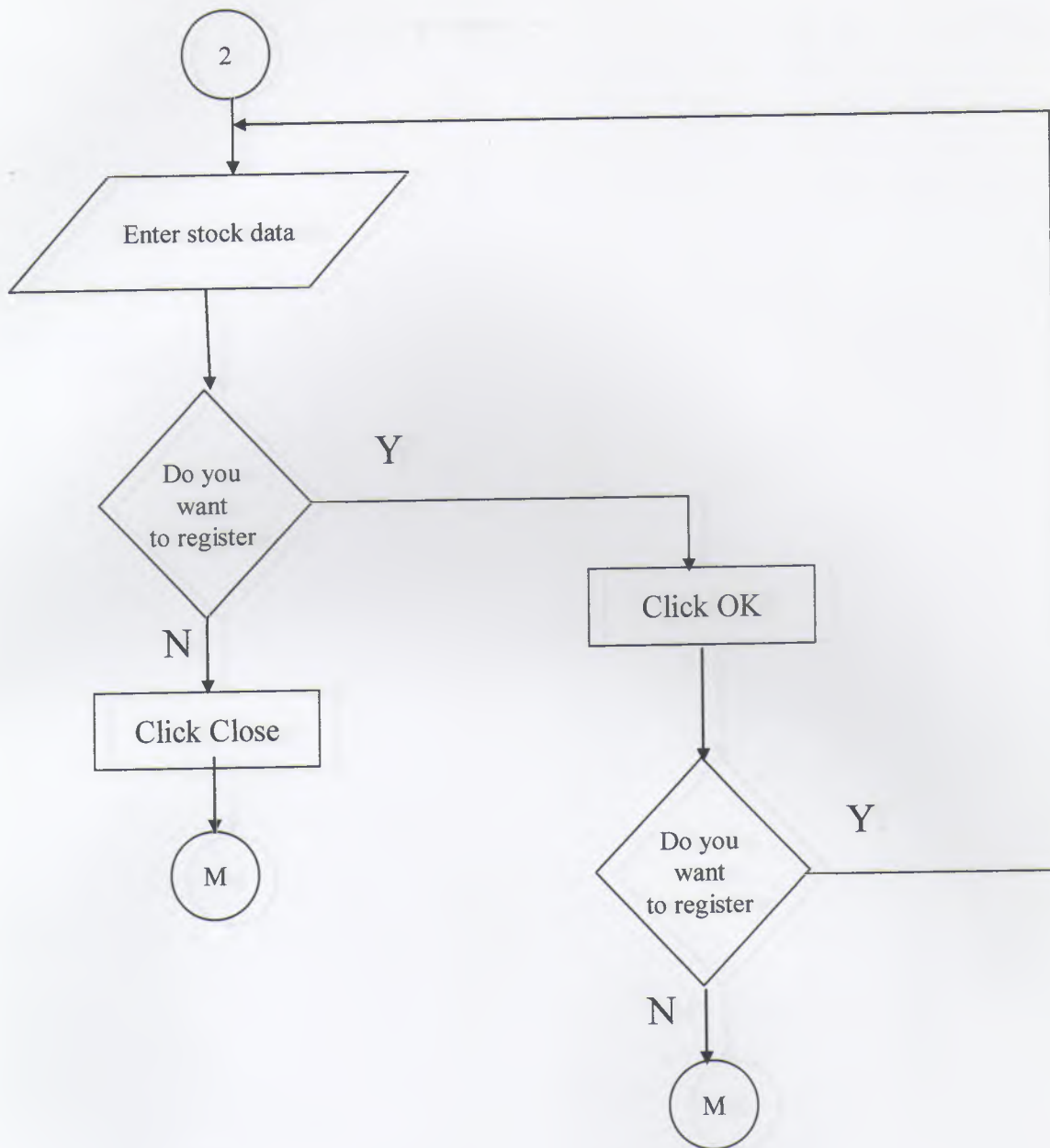


# SALE

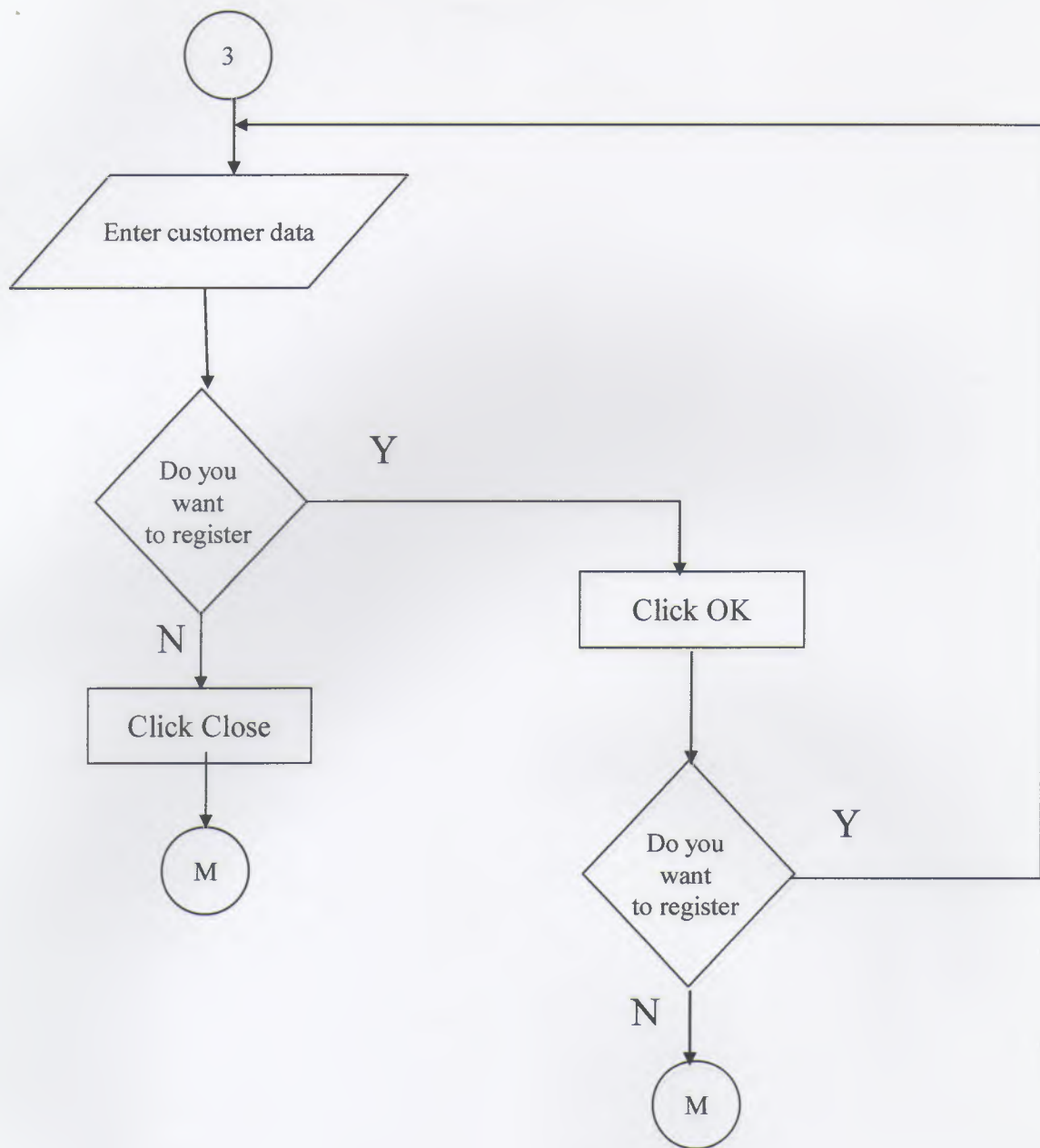




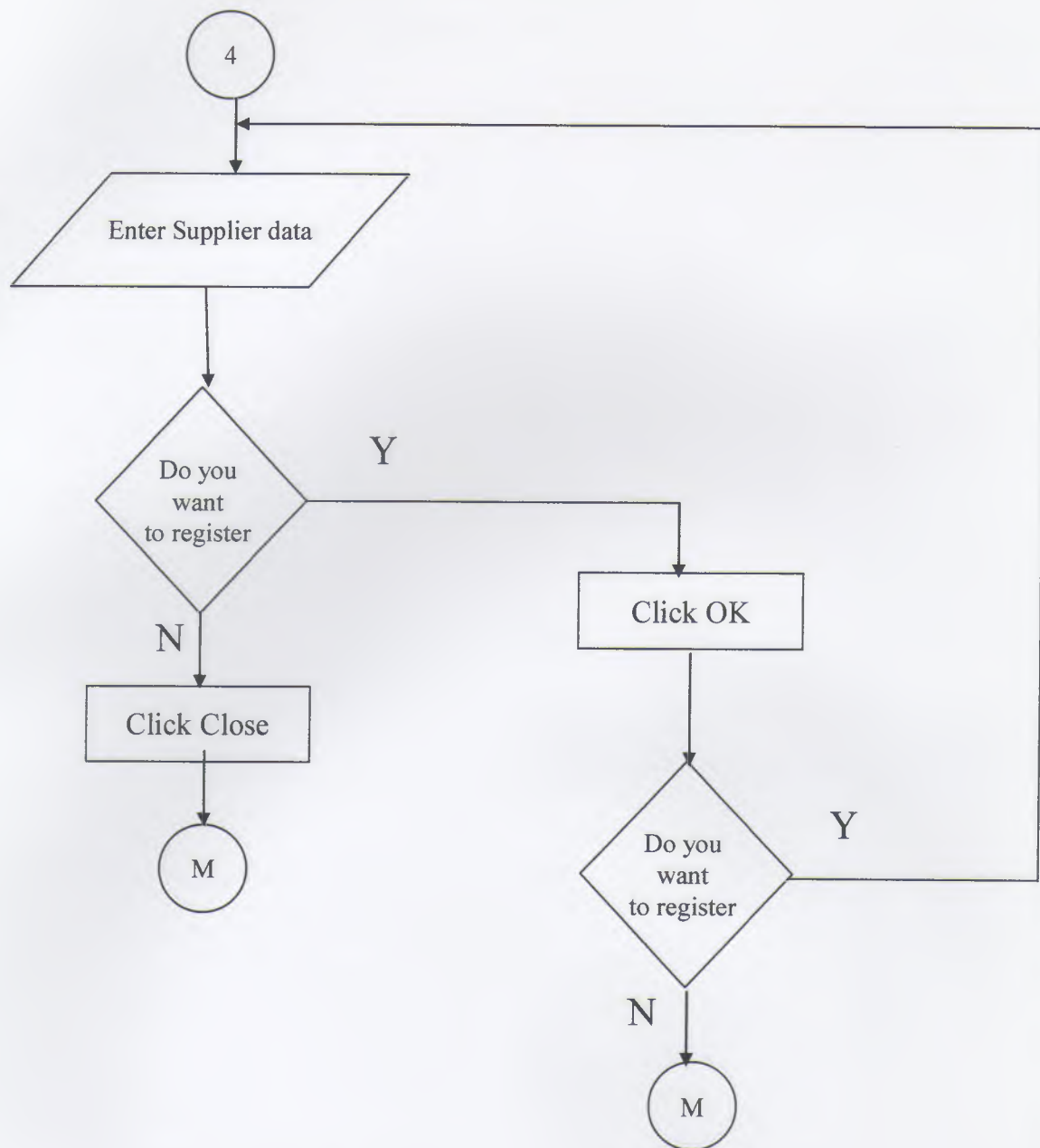
# STOCK



# CUSTOMER

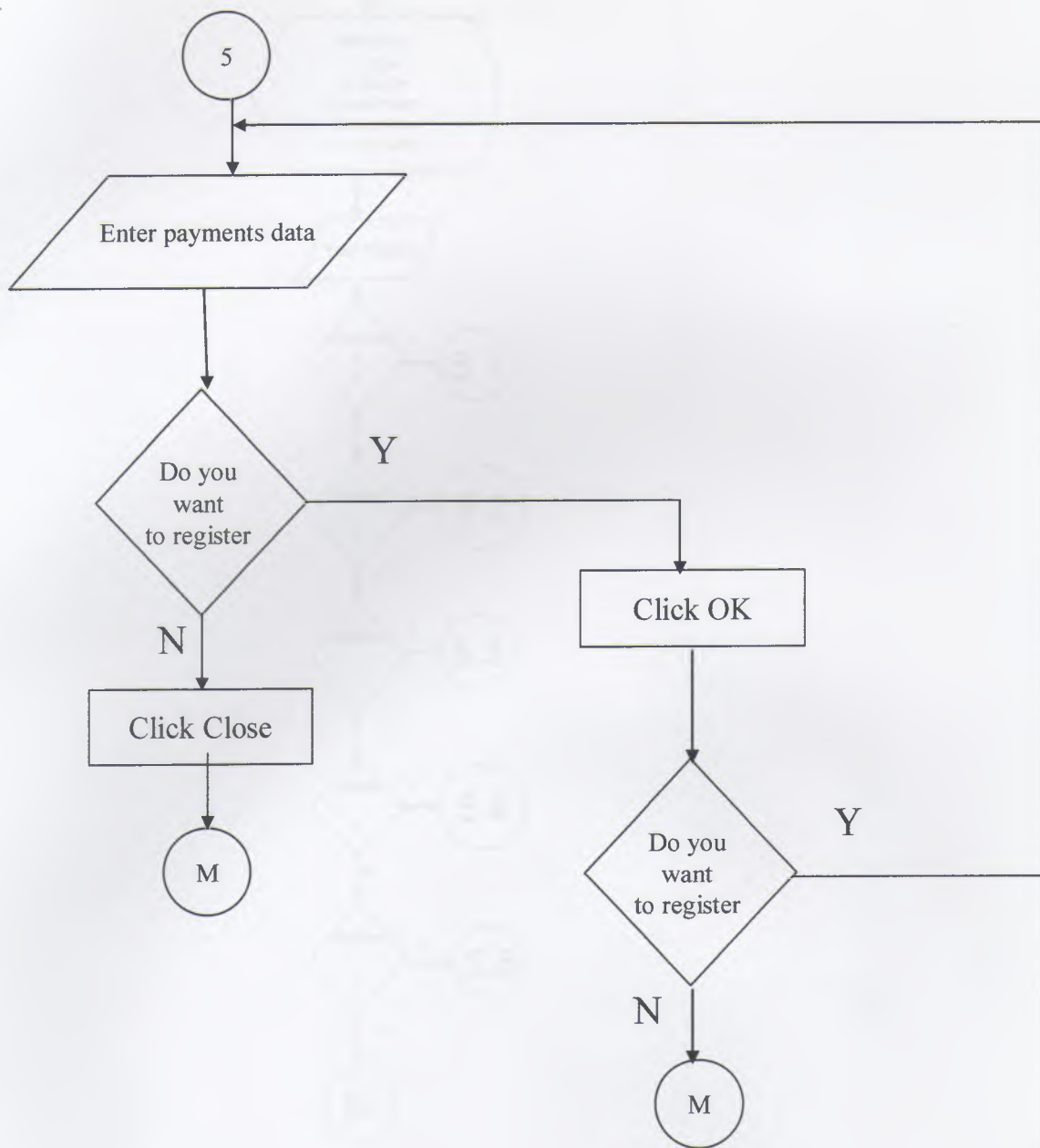


# SUPPLIER

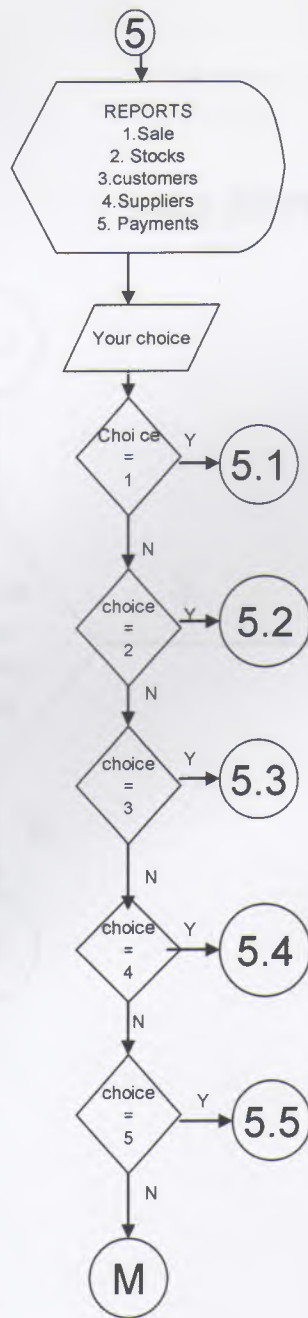




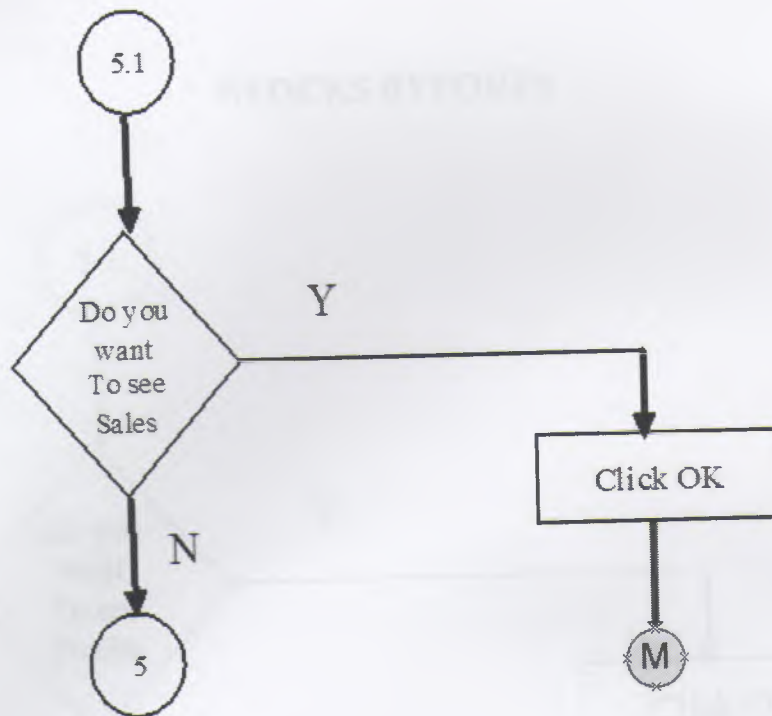
# PAYMENTS



# REPORTS

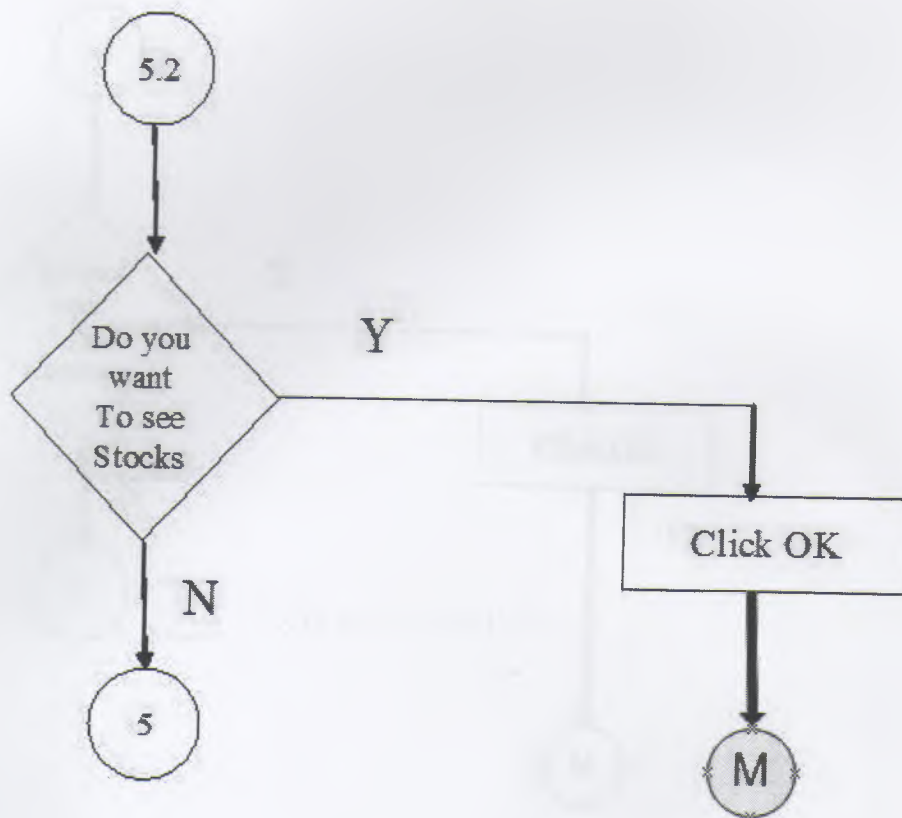


## SALE REPORTS

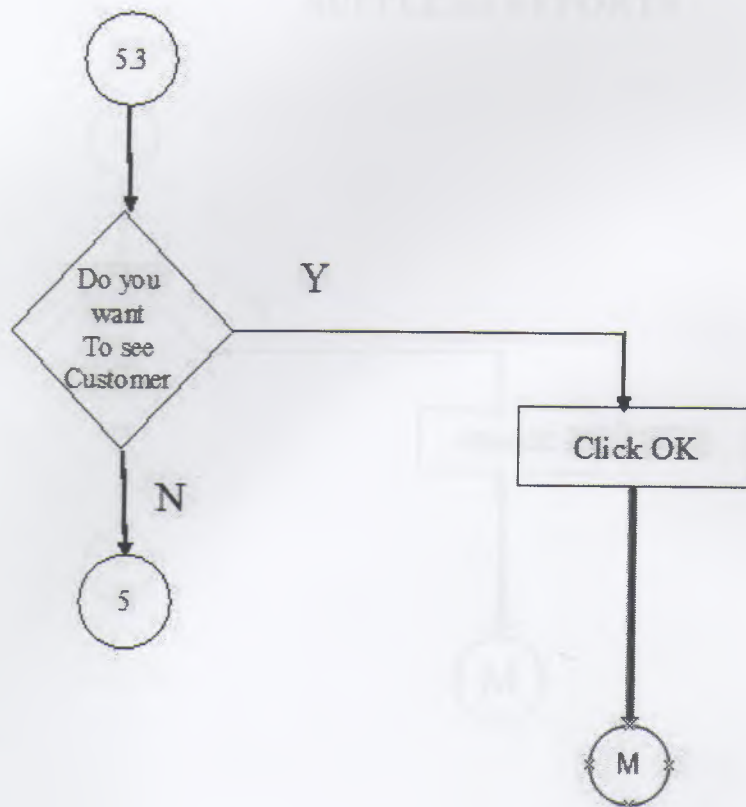




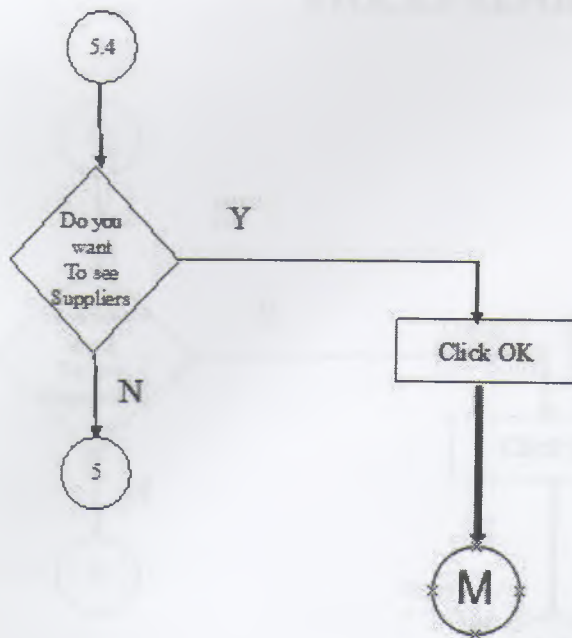
## STOCKS REPORTS



## CUSTOMER REPORTS

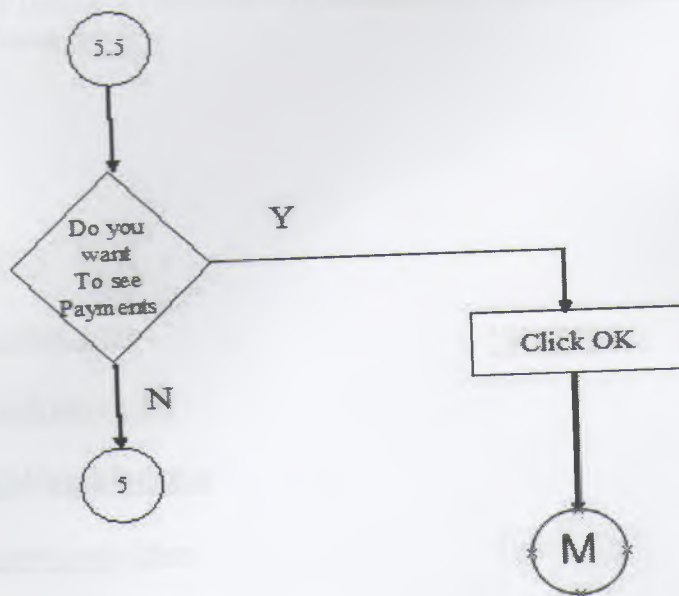


## SUPPLERS REPORTS

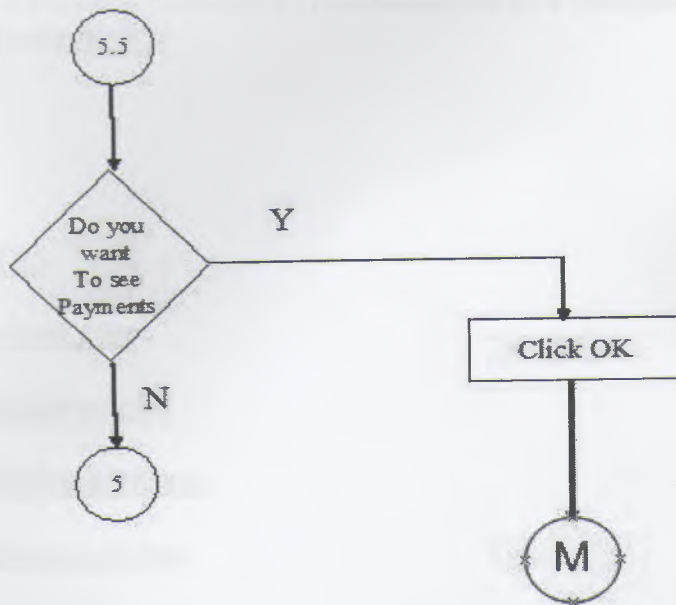




## STOCKS REPORTS



## STOCKS REPORTS



# REFERENCES

## BOOKS

Borland Delphi 7 – Balkan E.(Seçkin Yayımcılık)

Borland Delphi 7 –Karagülle İ(Türkmen Kitabevi)

Mastering delphi 7 –Cantu M.

SGL SERVER 2005 –Taylor A.G (2005)

Structure Desing –Yourdon E.(Fundamentals of a Discipline of Computer Program and System Desing)

## WEBSITES

[www.borland.com](http://www.borland.com)

[www.delpikursu.com](http://www.delpikursu.com)

[www.delphiturkiye.com](http://www.delphiturkiye.com)

[www.marcocantu.com](http://www.marcocantu.com)

[www.delphifans.com](http://www.delphifans.com)