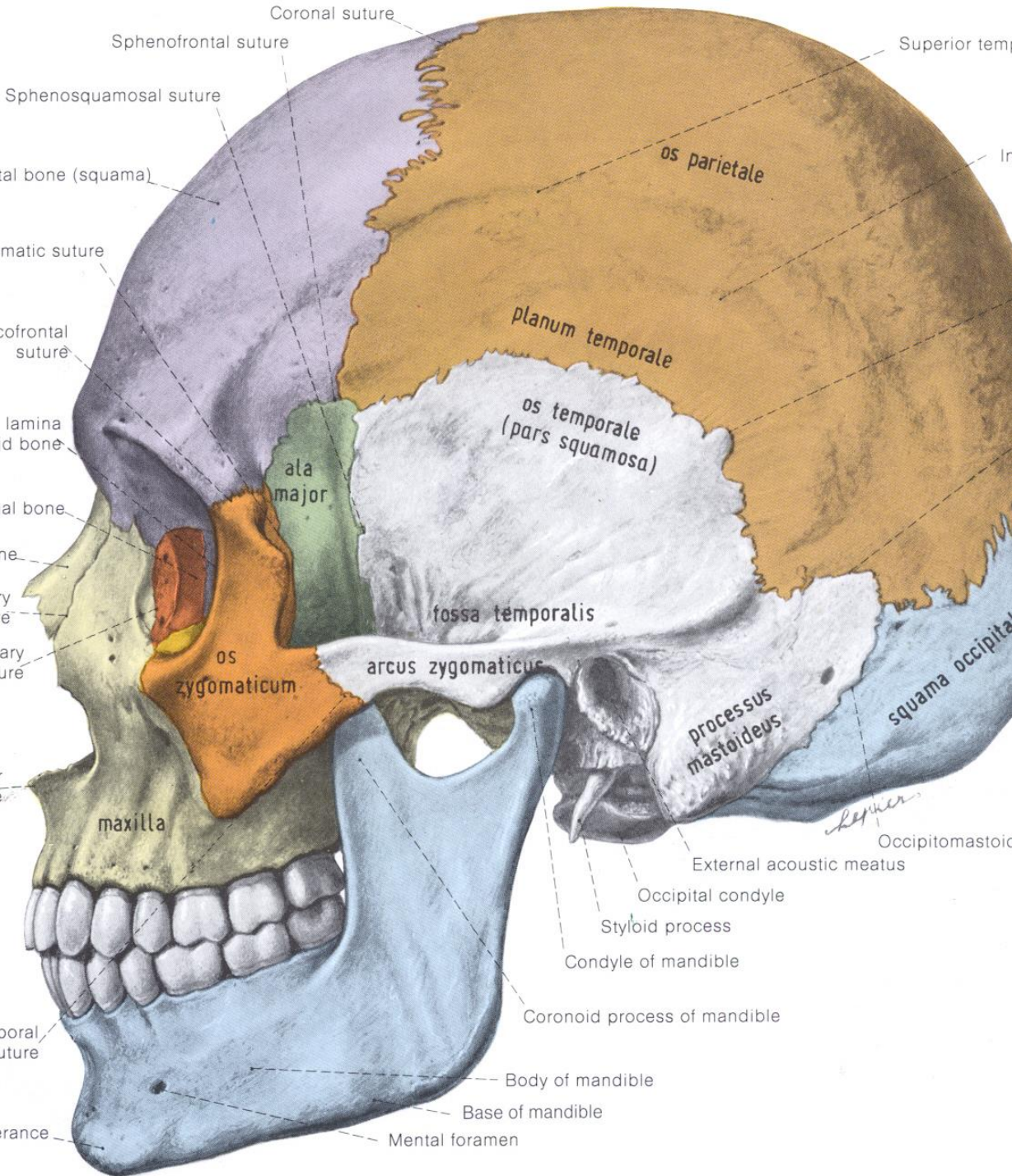


Articulatio Temporomandibularis

Prof. Dr. Sezgin İlgi



Articulatio Temporomandibularis

art. condylaris
synovial

fossa mandibularis
tuberculum articulare

caput mandibula

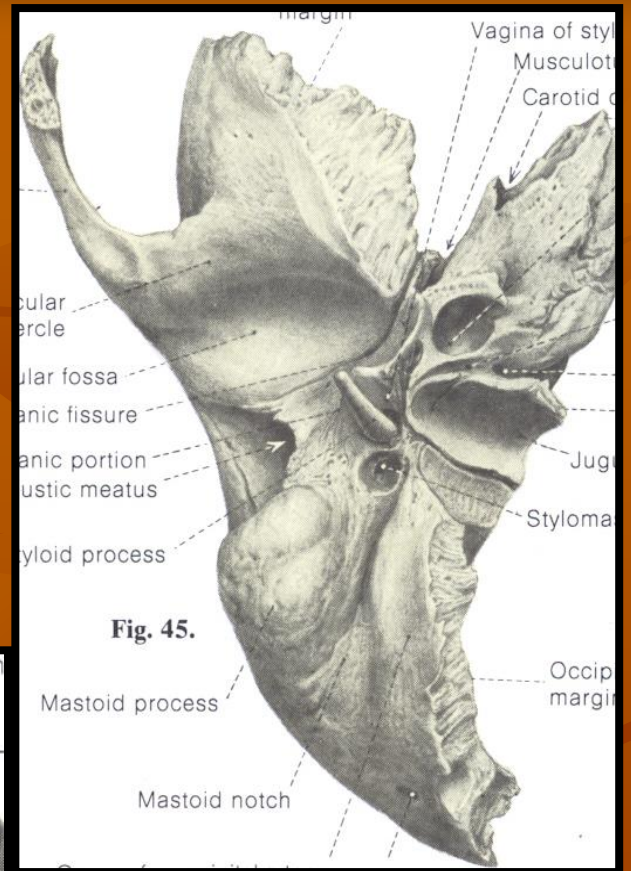
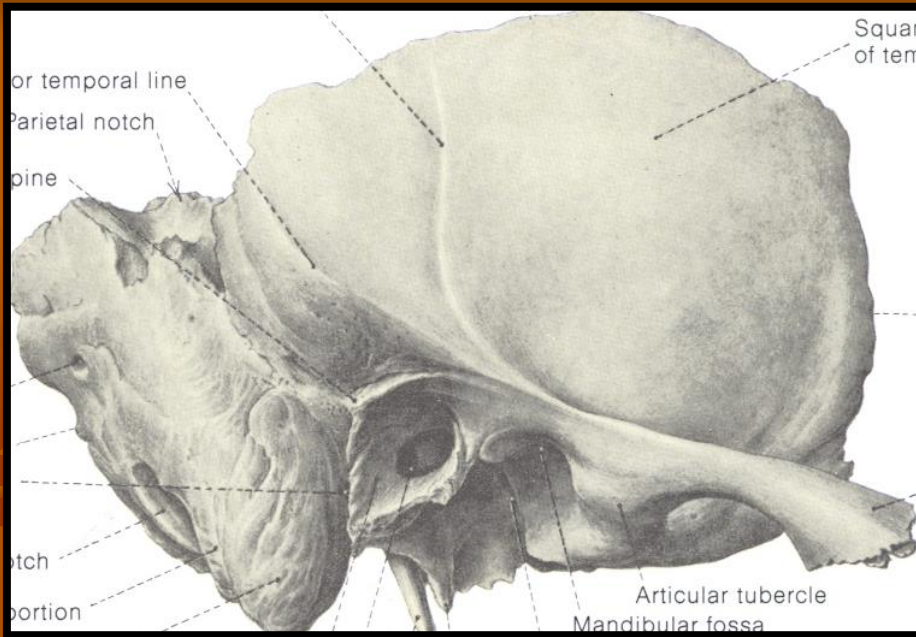
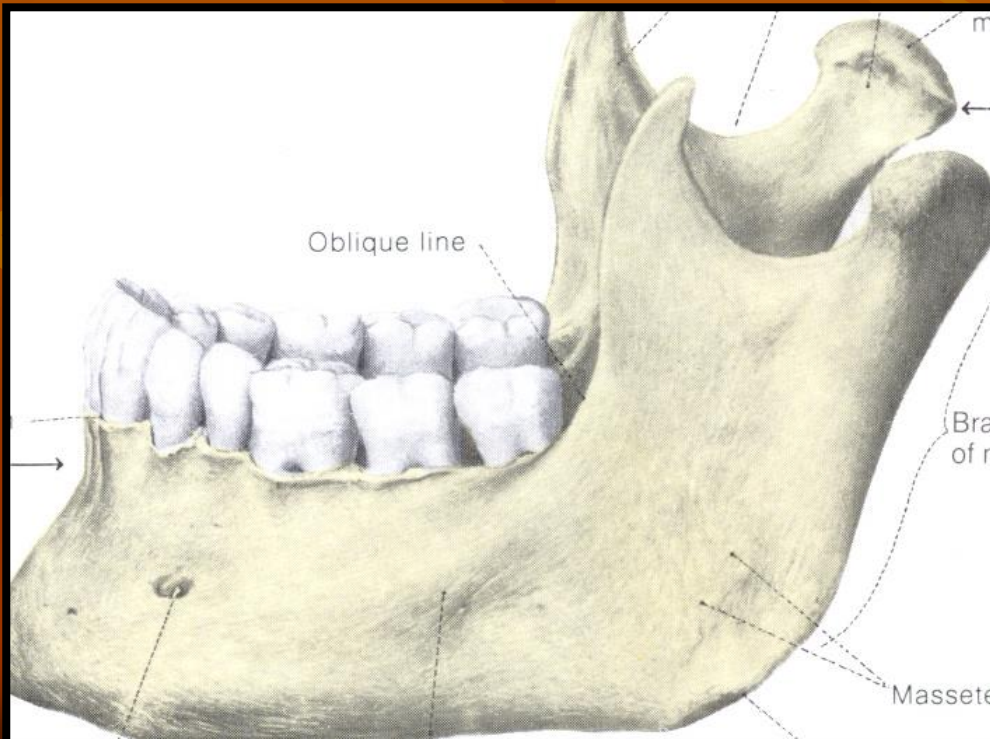


Fig. 45.



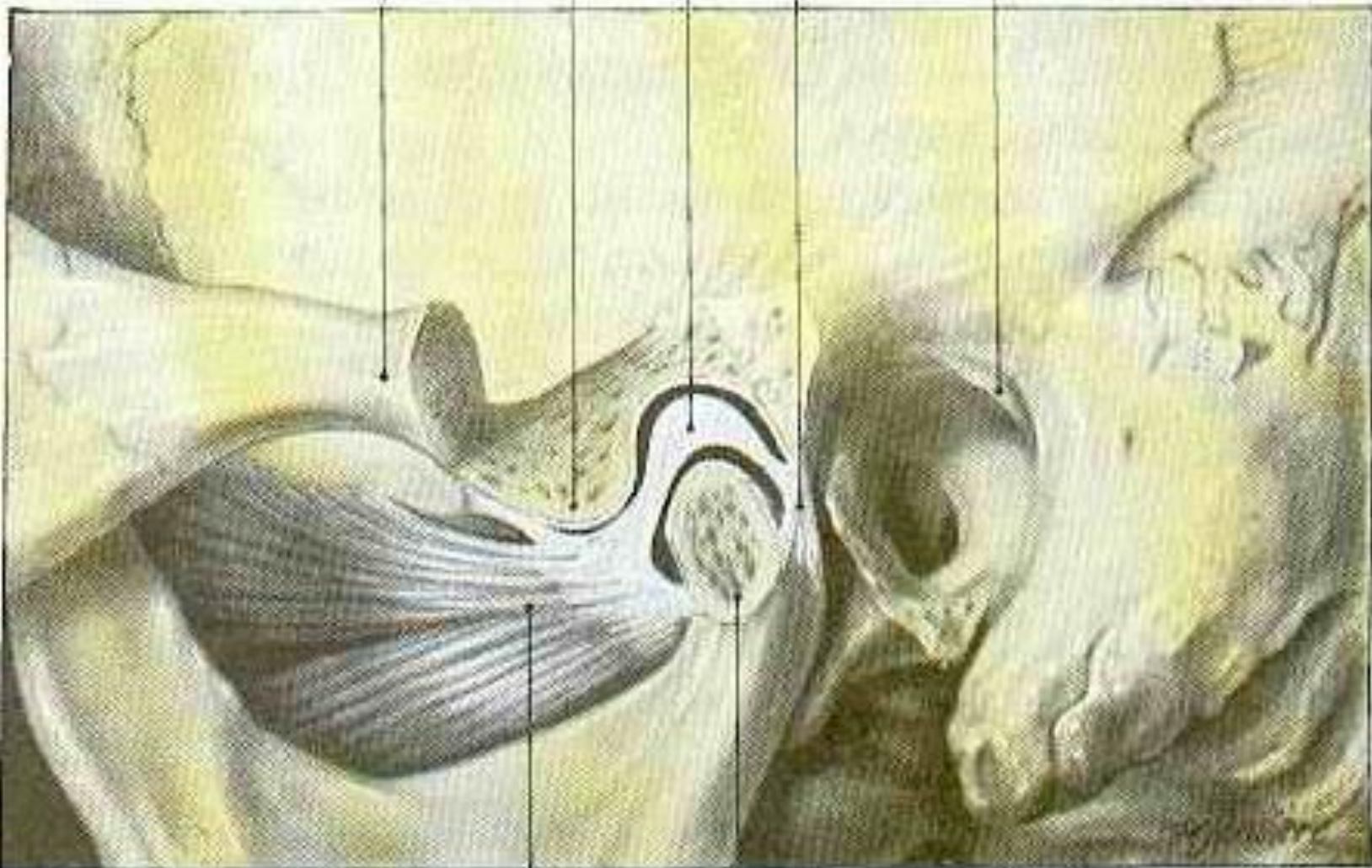
Articular tubercle

Zygoma

Articular disc

Fibrous capsule

Suprameatal spine

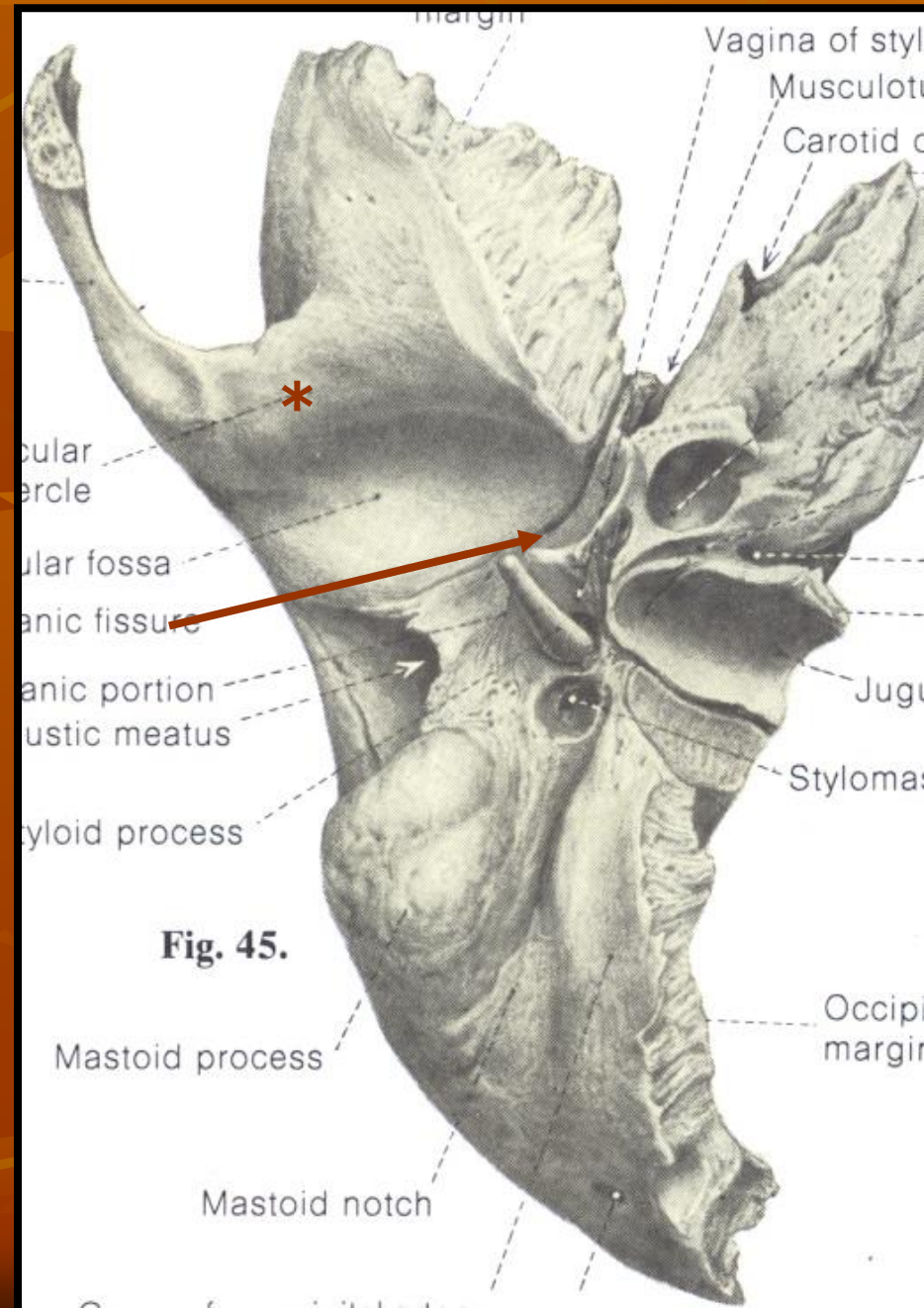


Lateral pterygoid

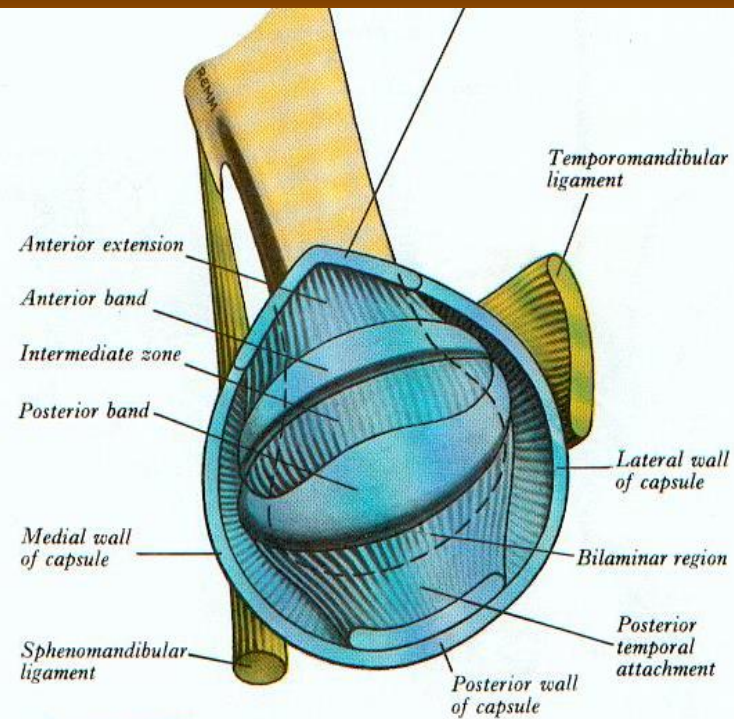
Condyloid process

capsula Articularis

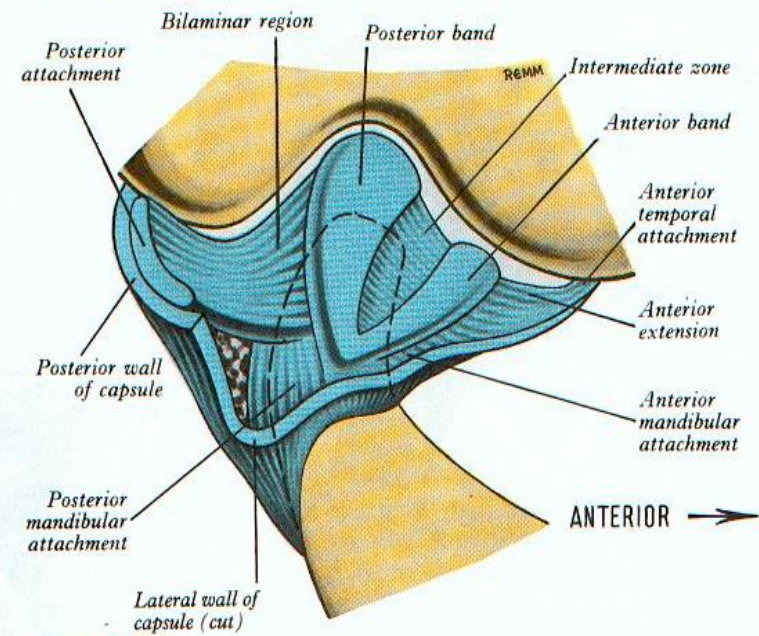
- tuberculum articulare
- fissura petrotympanica
- collum mandibulae
- discus articularis



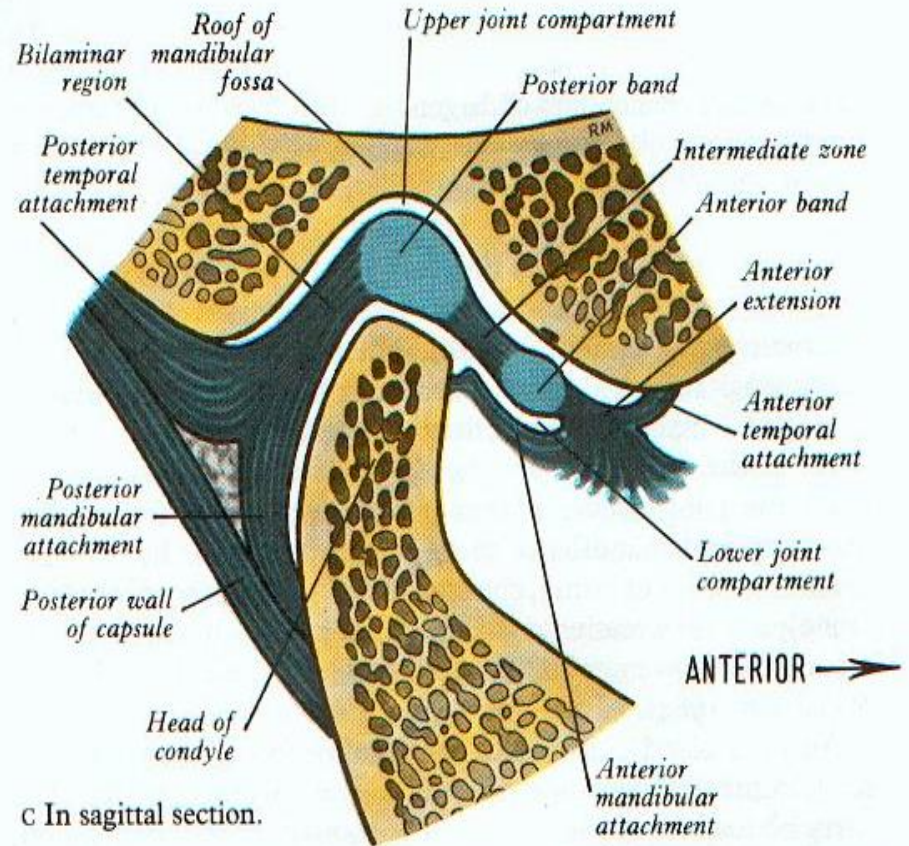
Discus articularis



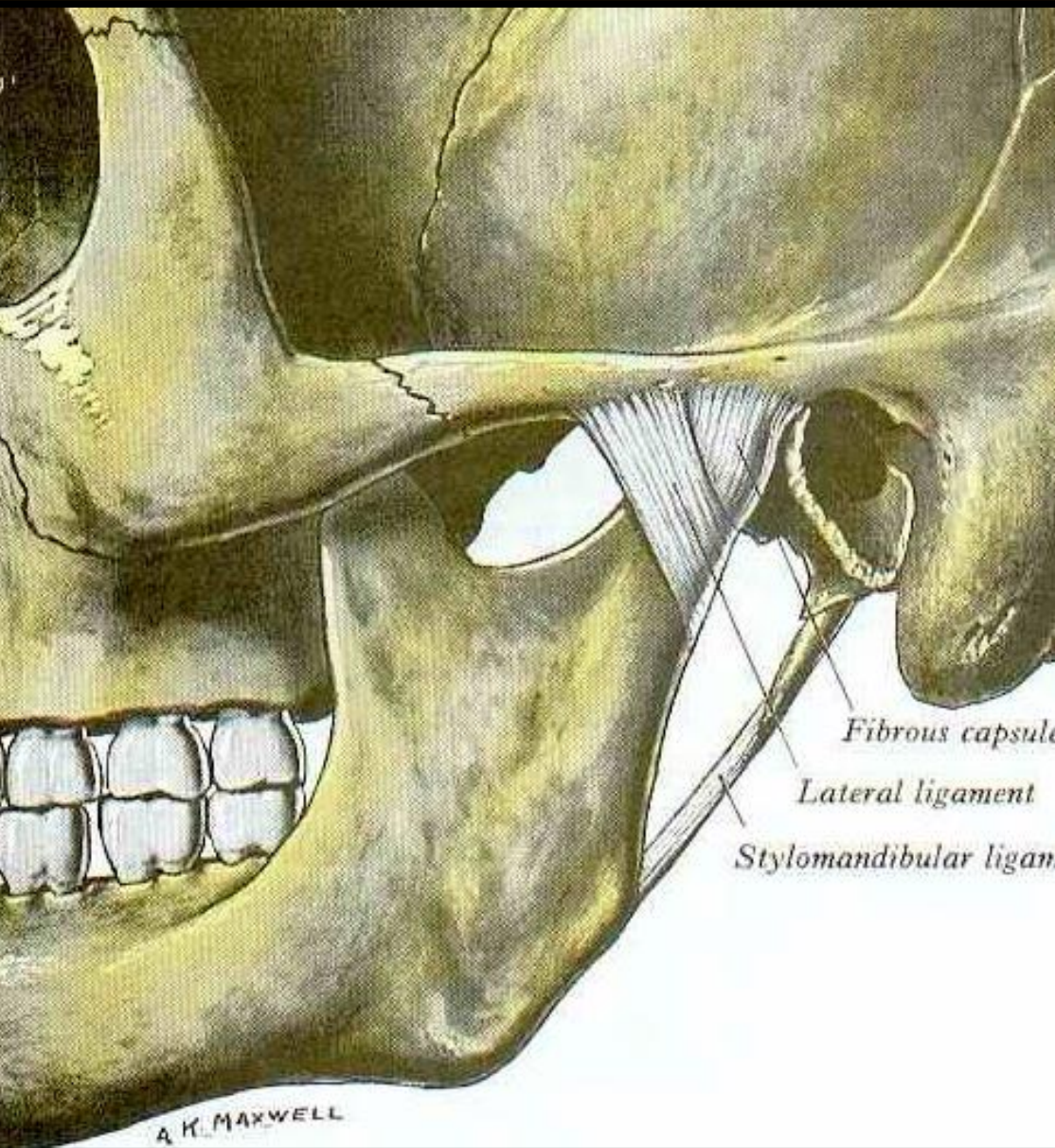
A Superior aspect.



B Lateral aspect.



C In sagittal section.



Capsula articularis

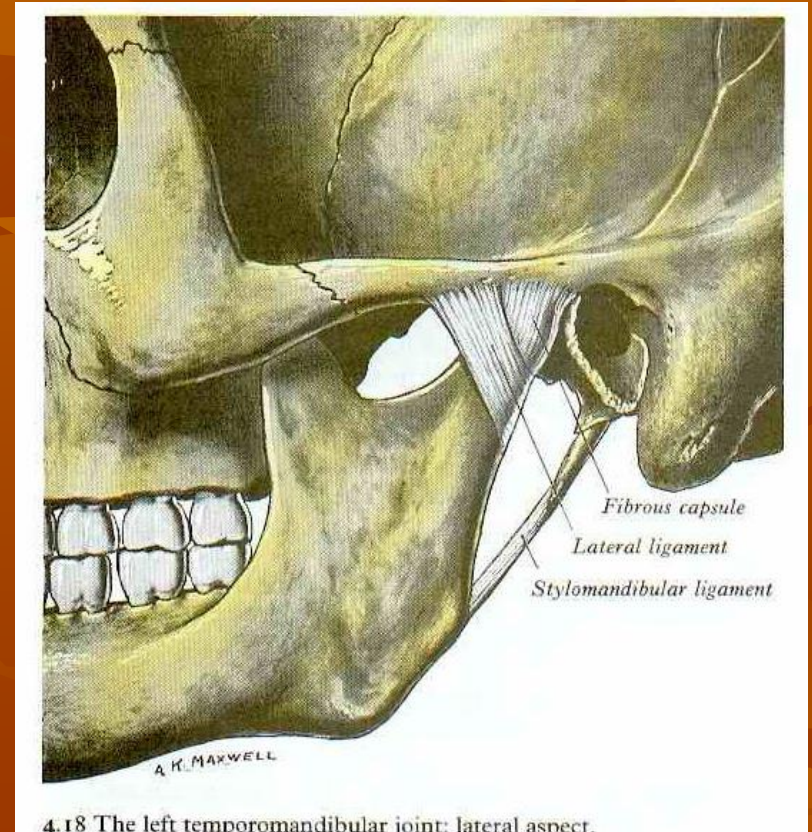
Lig. Laterale

L. Sphenomandibulare

L. Stylomandibulare

Lig. Laterale (lig. temporomandibulare)

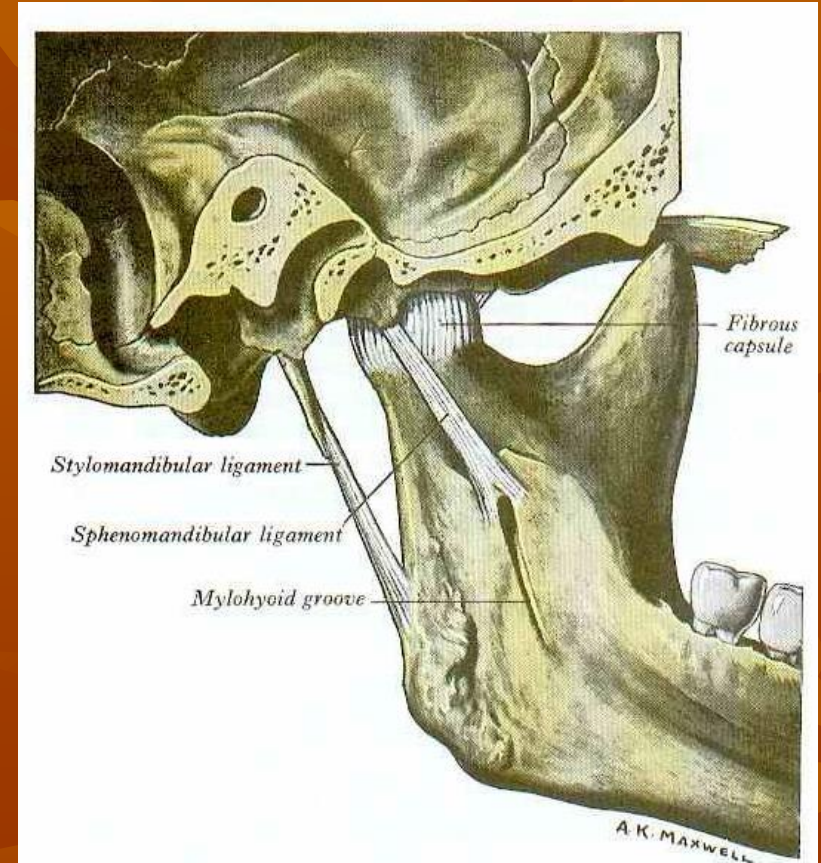
- Yukarıda:
os temporale'nin
processus zygomaticus'u
- Aşağıda:
collum mandibula
arka kenarı

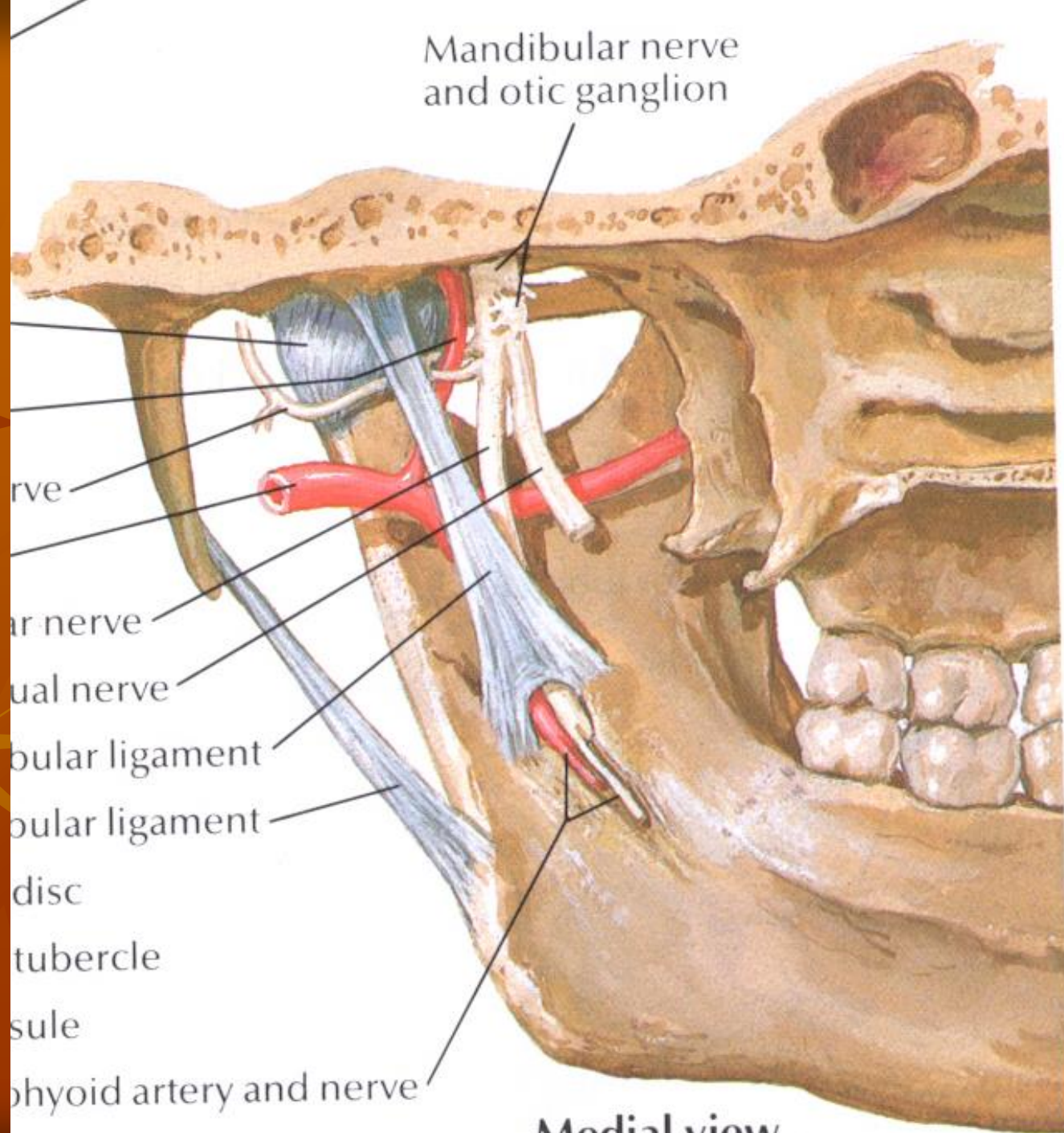


4.18 The left temporomandibular joint: lateral aspect.

Lig. sphenomandibulare

- Yukarıda:
spina ossis sphenoidalis
- Aşağıda:
lingula mandibula





Mandibular nerve and otic ganglion

ve

ar nerve

ual nerve

oular ligament

oular ligament

disc

tubercle

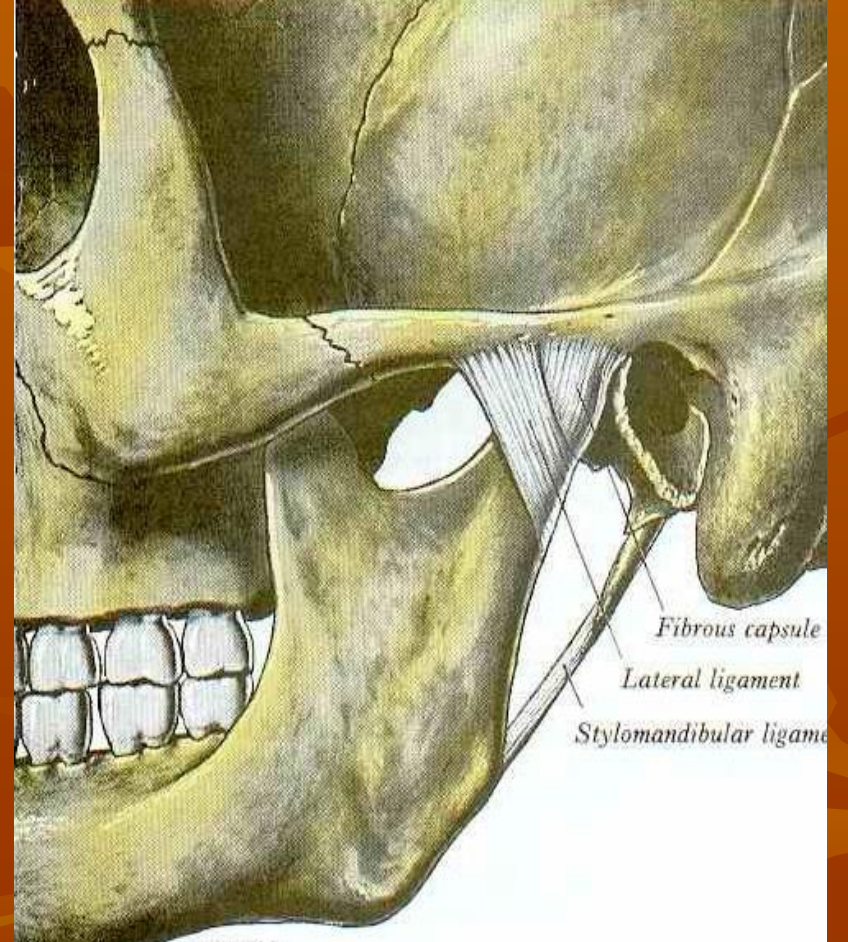
sule

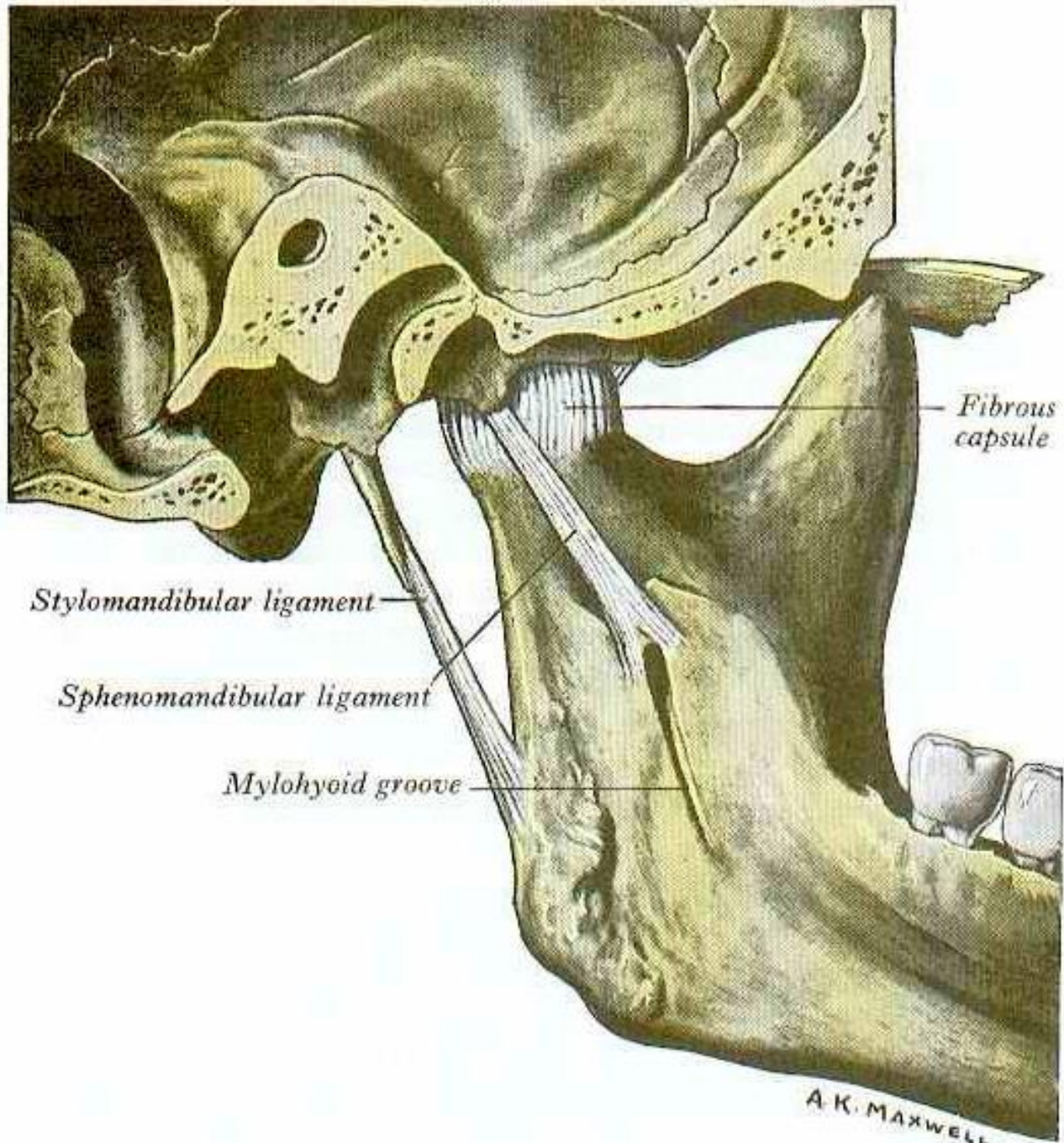
phyoid artery and nerve

Medial view

Lig. stylomandibulare

- Yukarıda:
processus styloideus
- Aşağıda:
angulus mandibula





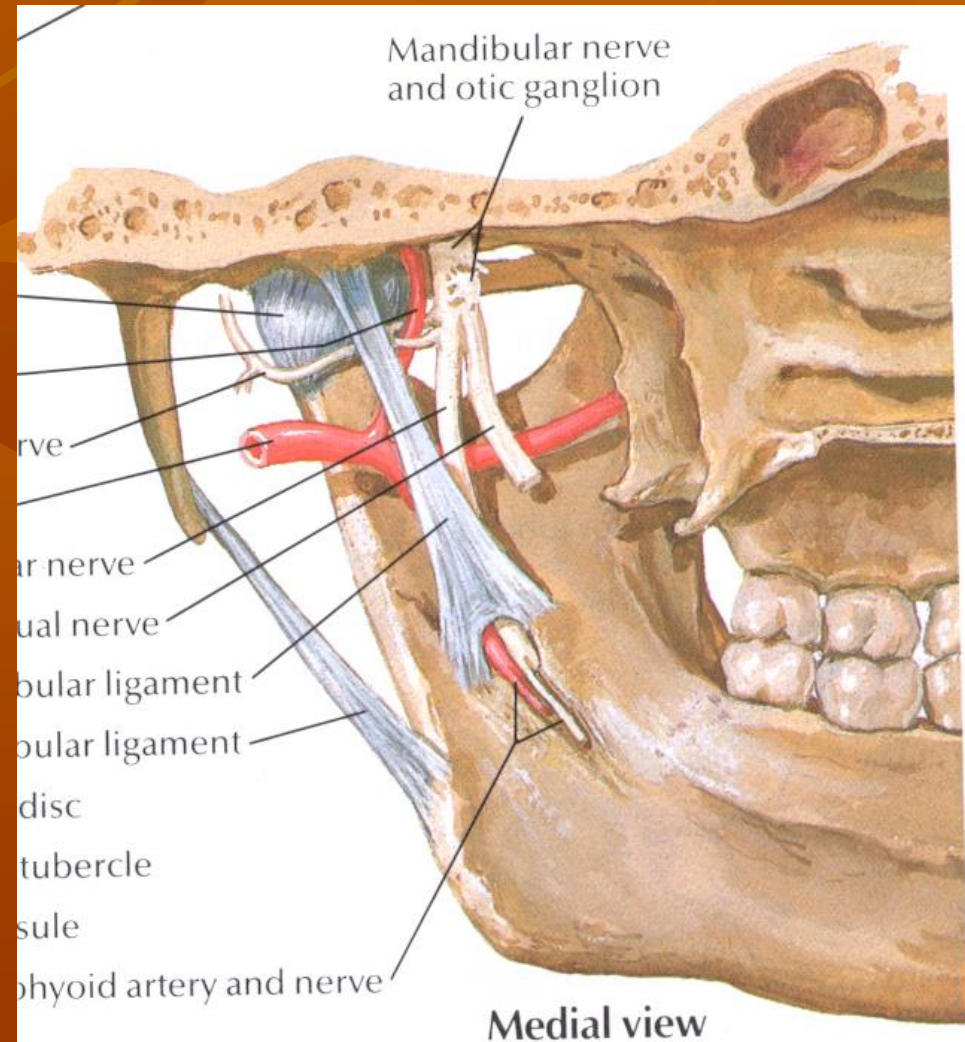
Damar ve sinirler

A. Temporalis superficialis

A. Maxillaris

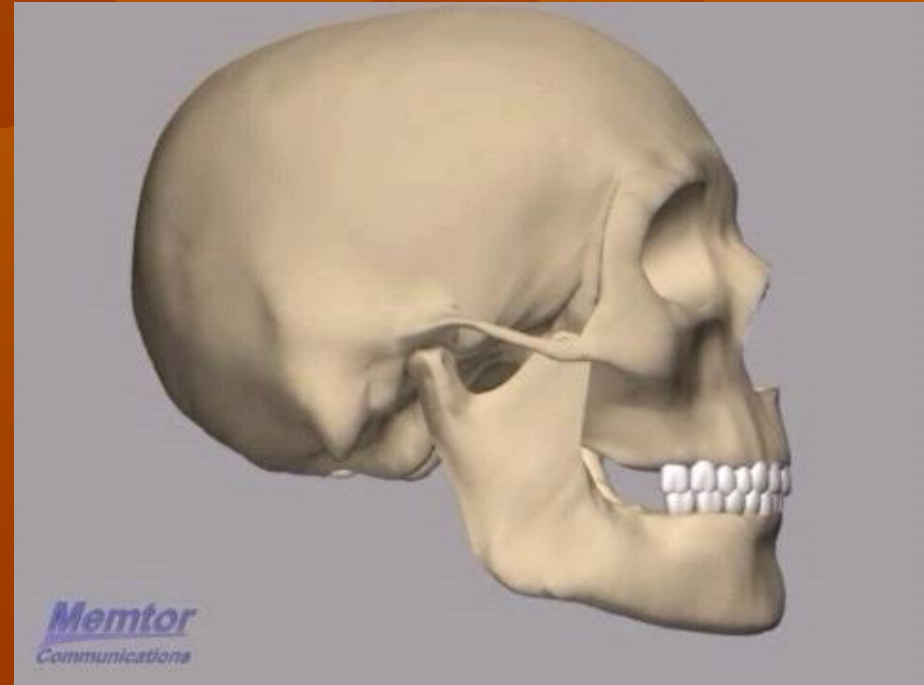
N. Auriculotemporalis

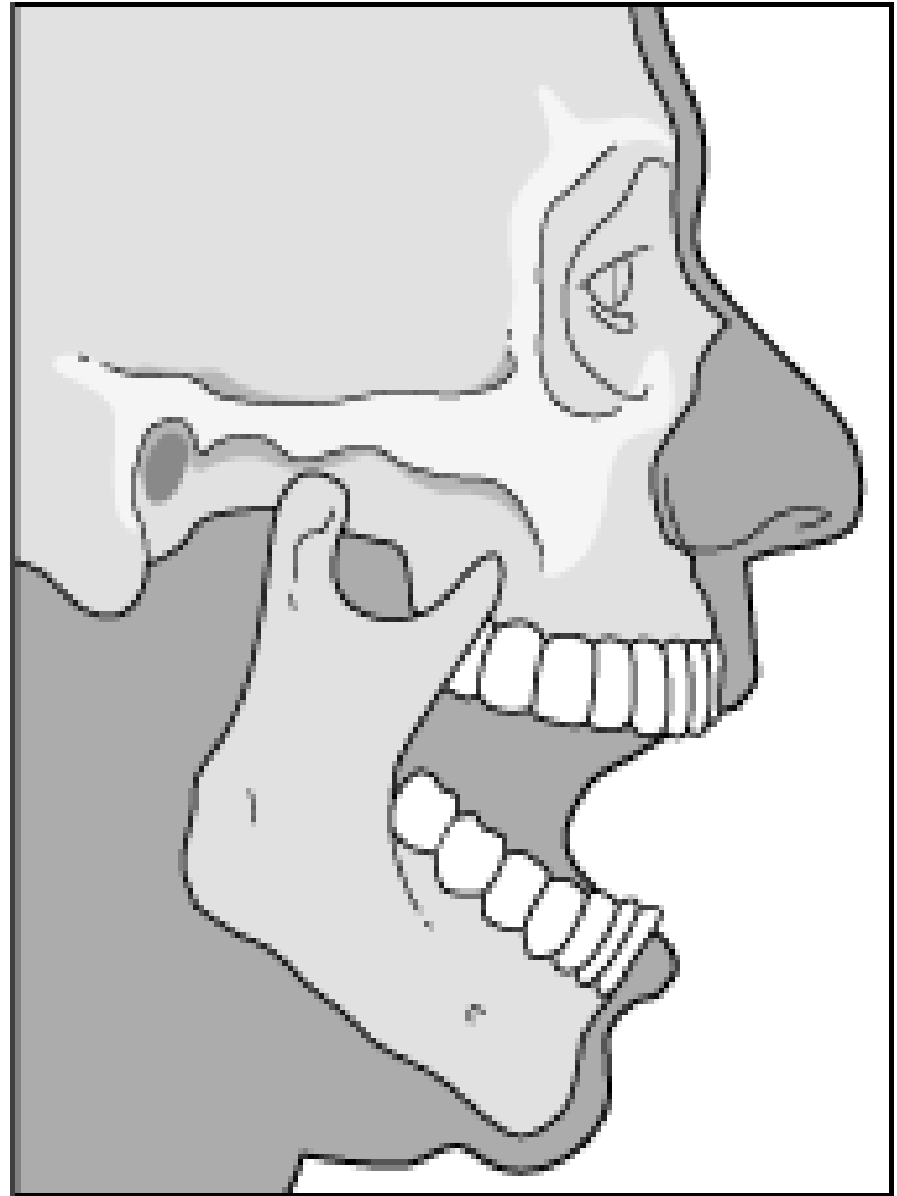
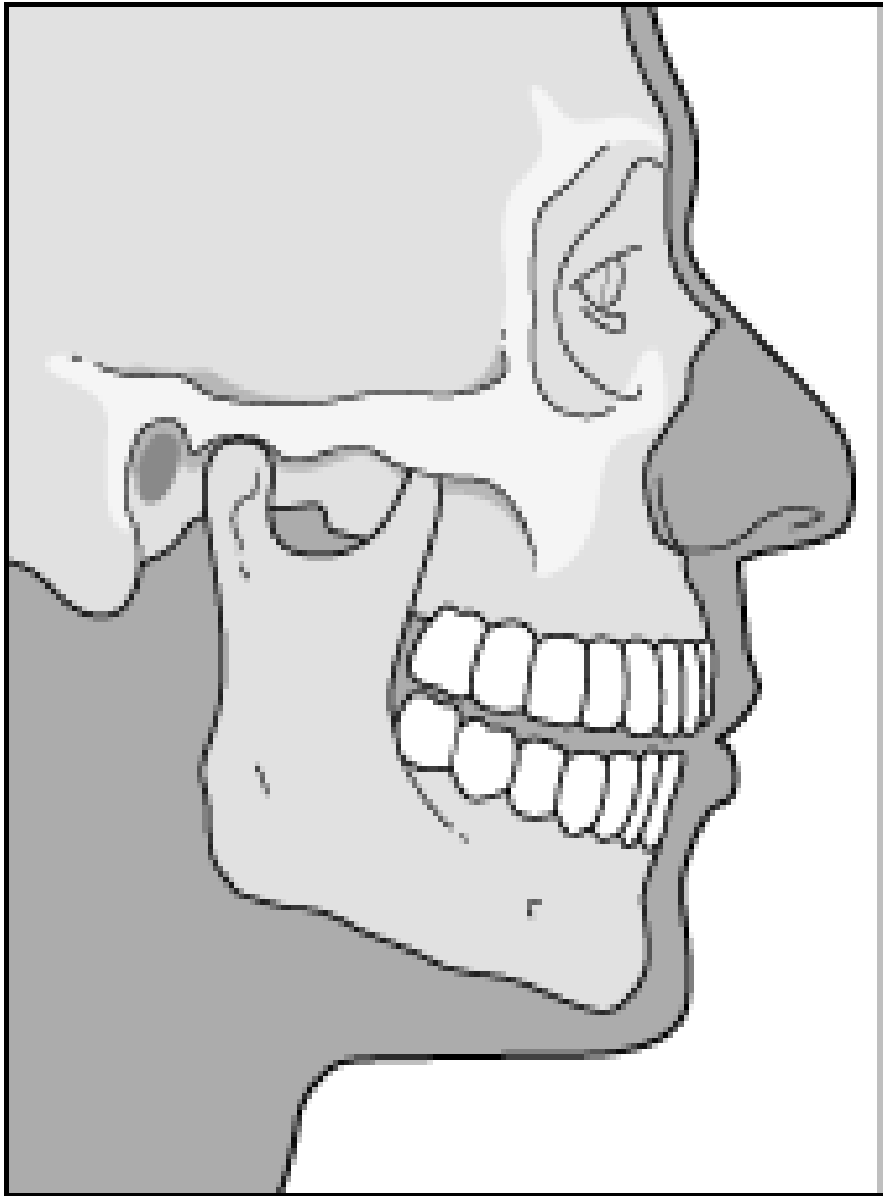
N. Massetericus

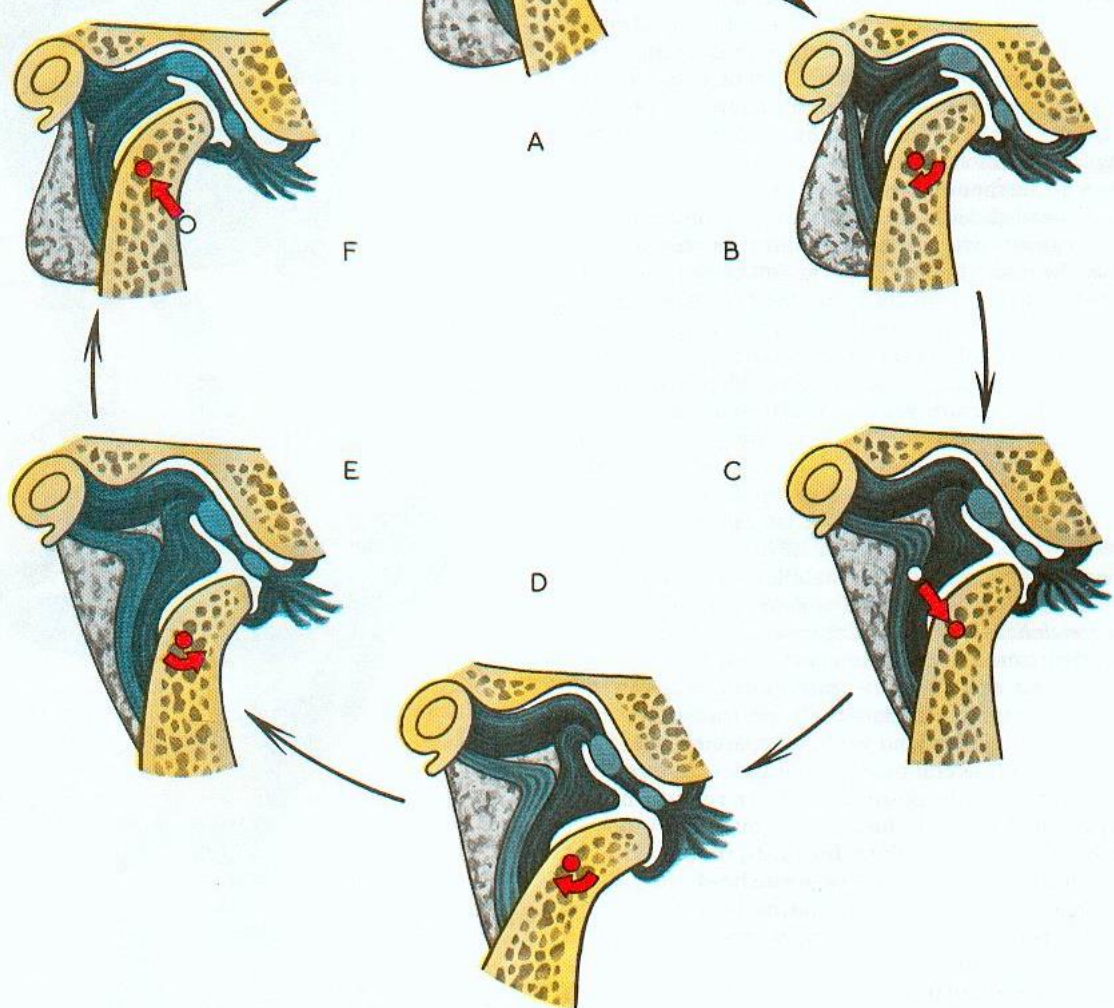
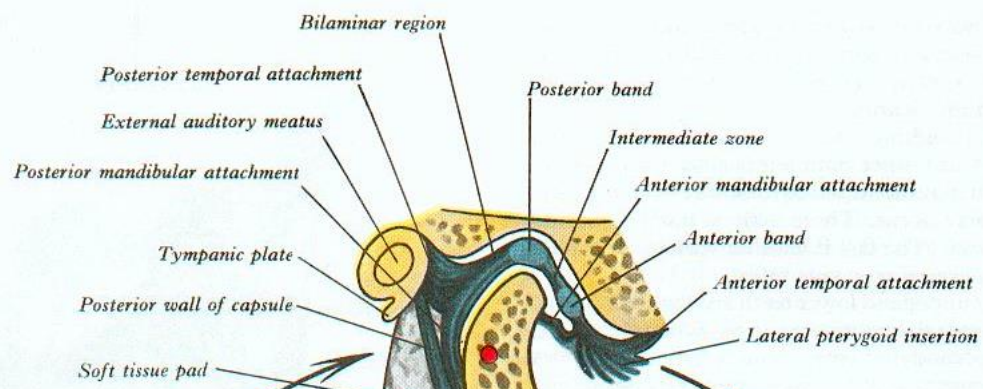


Art. temporomandibularis'in hareketleri

- Depresyon
- Elevasyon
- Protraksiyon
- Retraksiyon
- Çiğneme ve öğütme
(Yan hareketler)

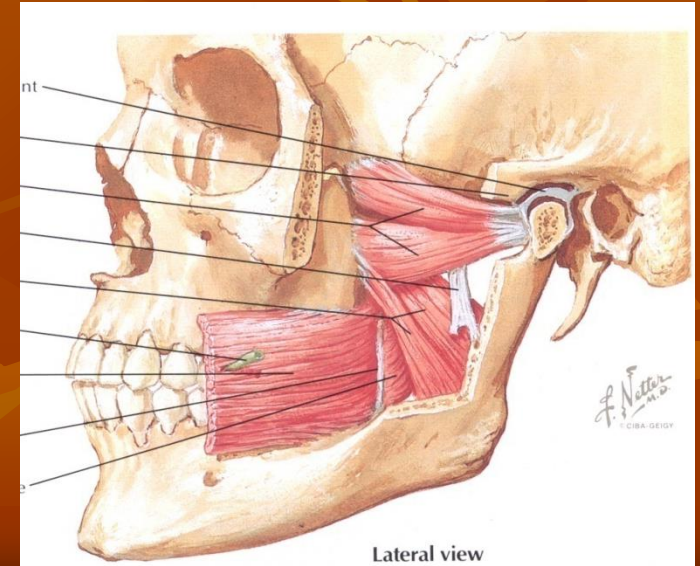
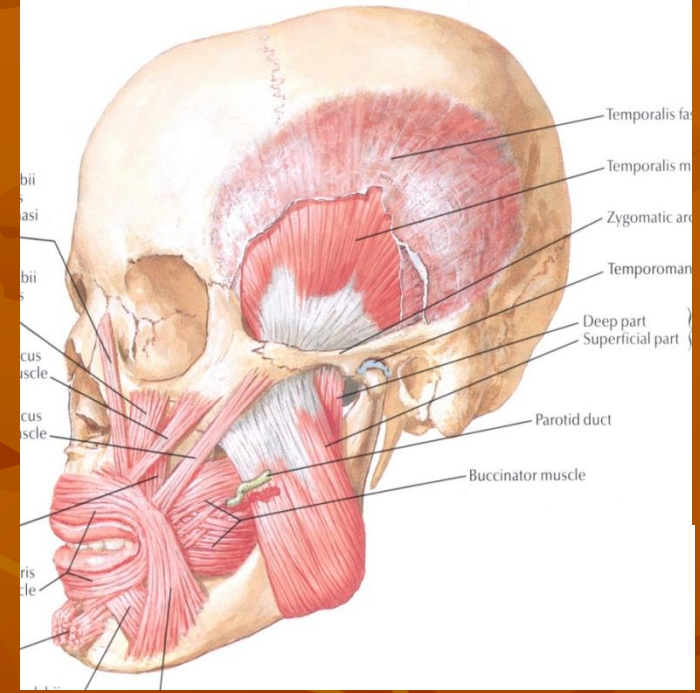




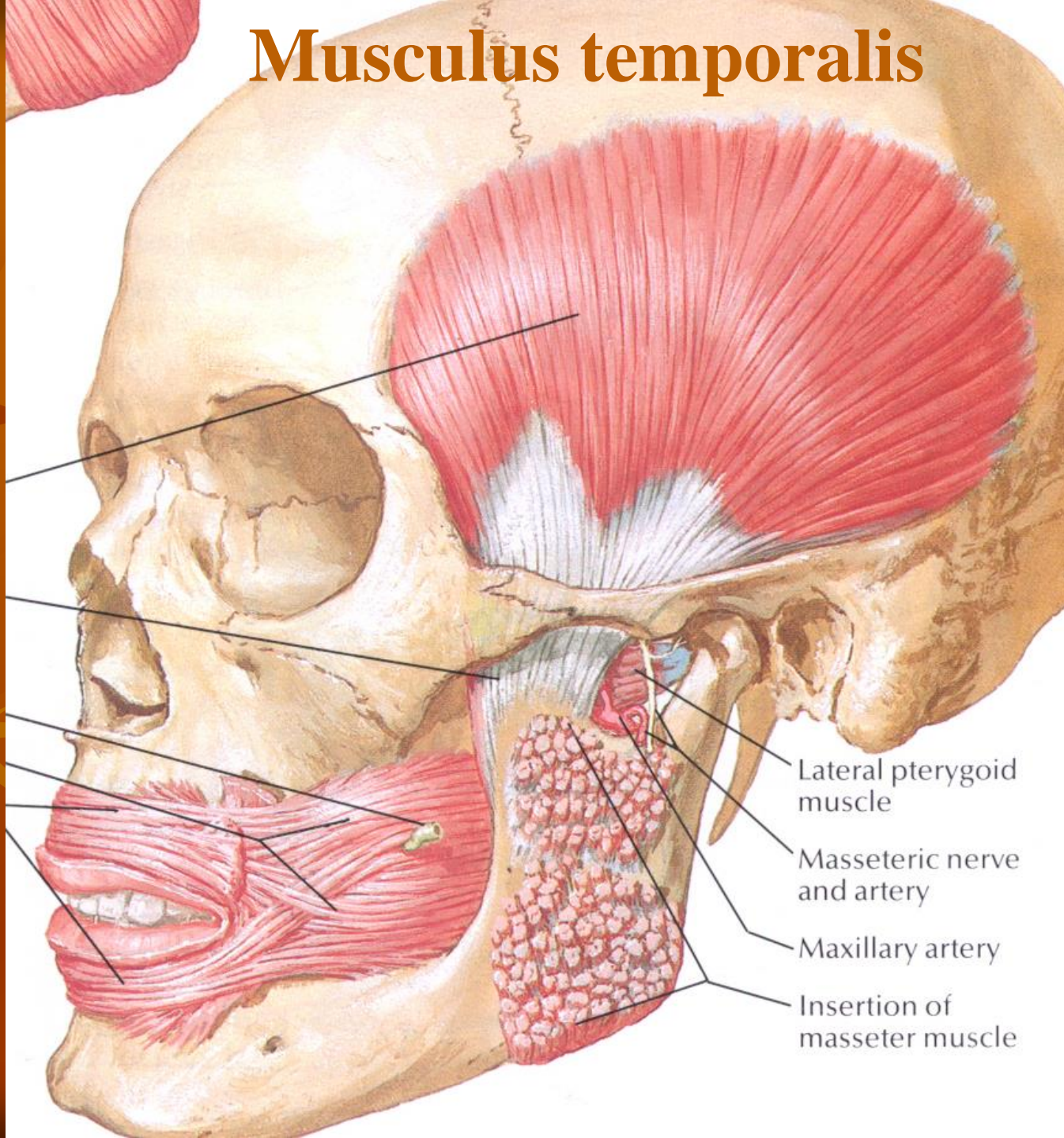


Çiğneme Kasları

- M. Temporalis
- M. Masseter
- M. Pterygoideus Medialis
- M. Pterygoideus Lateralis
- N. Mandibularis



Musculus temporalis

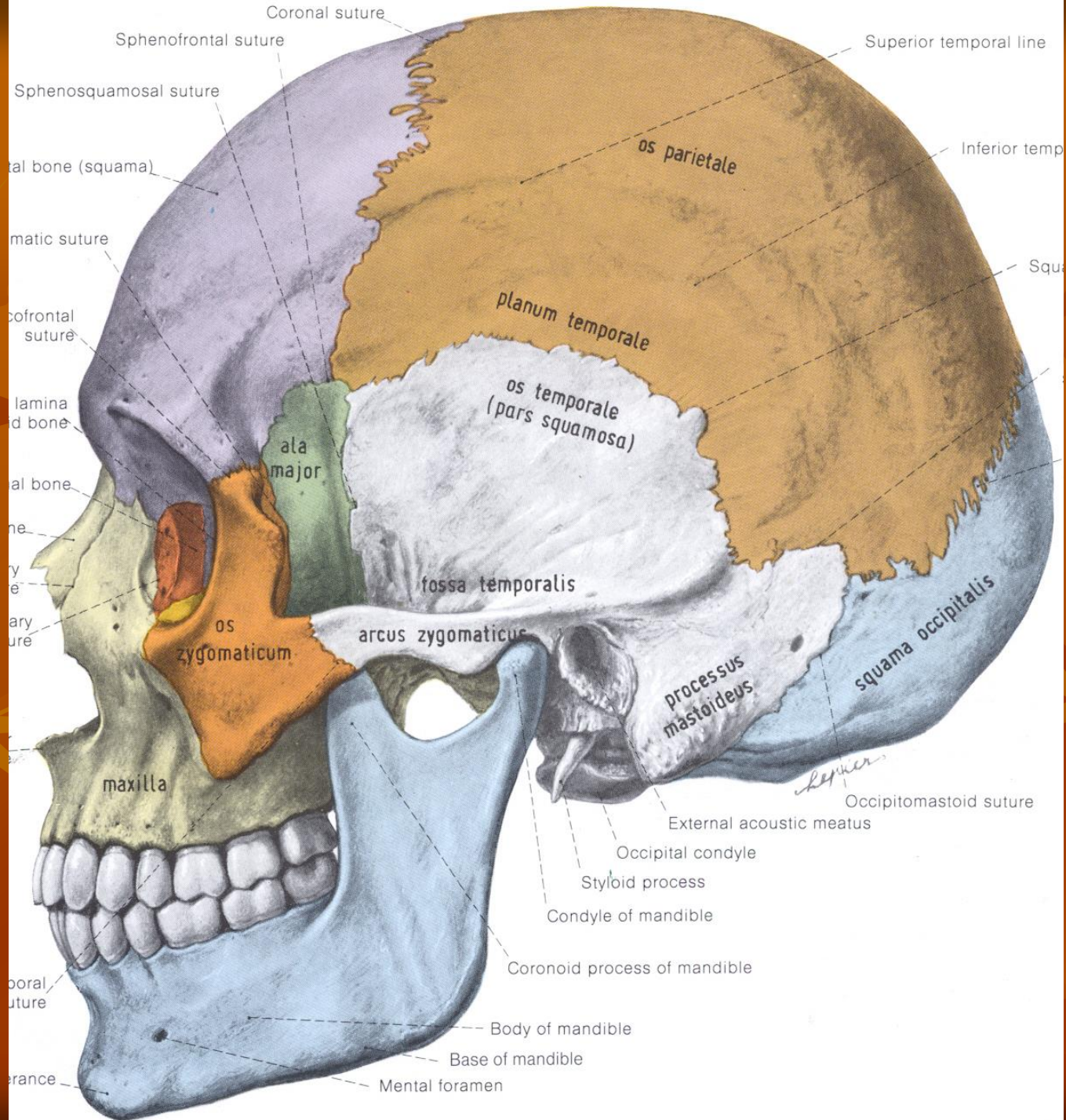


Lateral pterygoid muscle

Masseteric nerve and artery

Maxillary artery

Insertion of masseter muscle



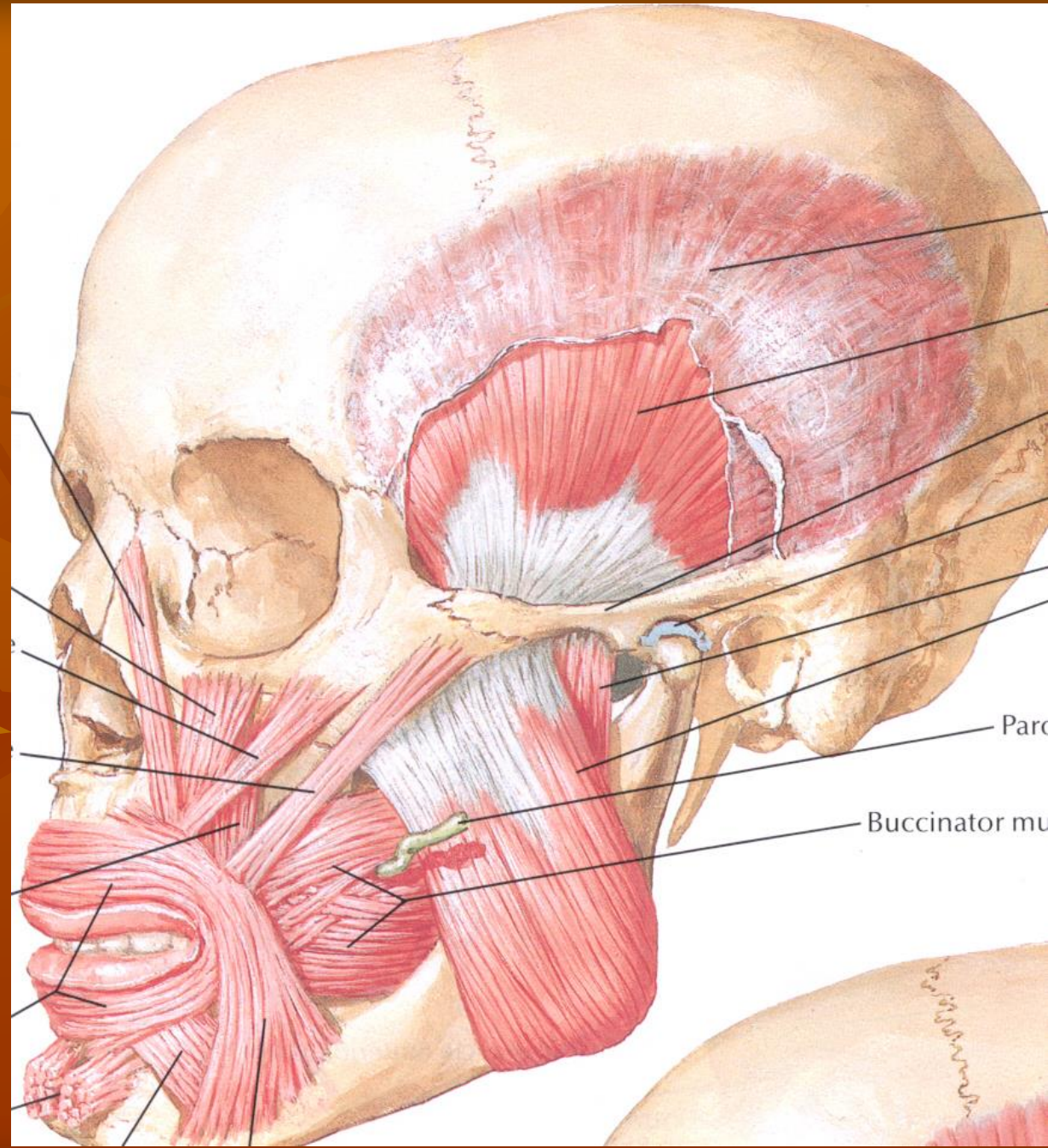
Fascia temporalis

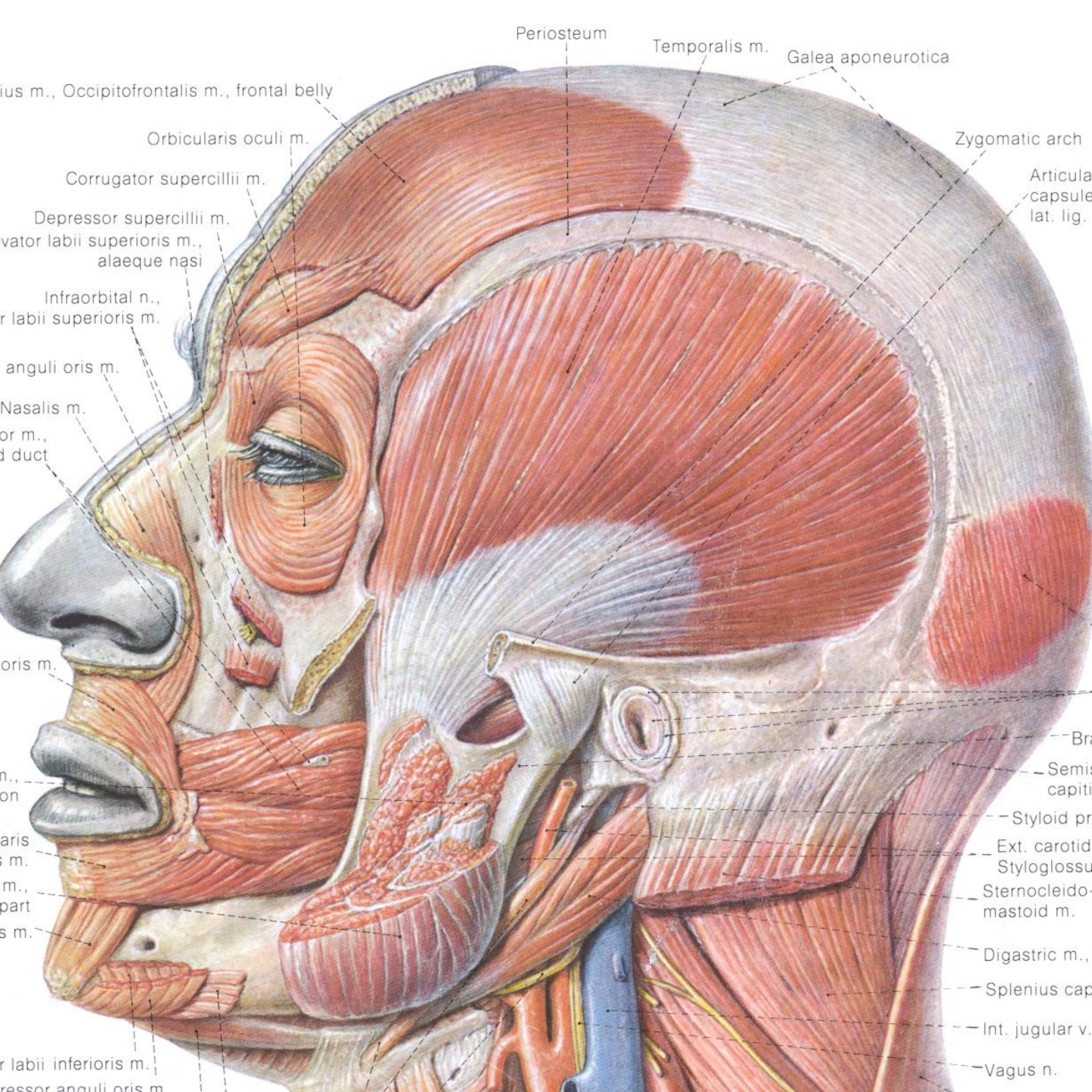
Lamina superficialis

Lamina profundus

a.zygomaticoorbitalis

r.zygomaticotemporalis





M. Temporalis

Linea temporalis inferior

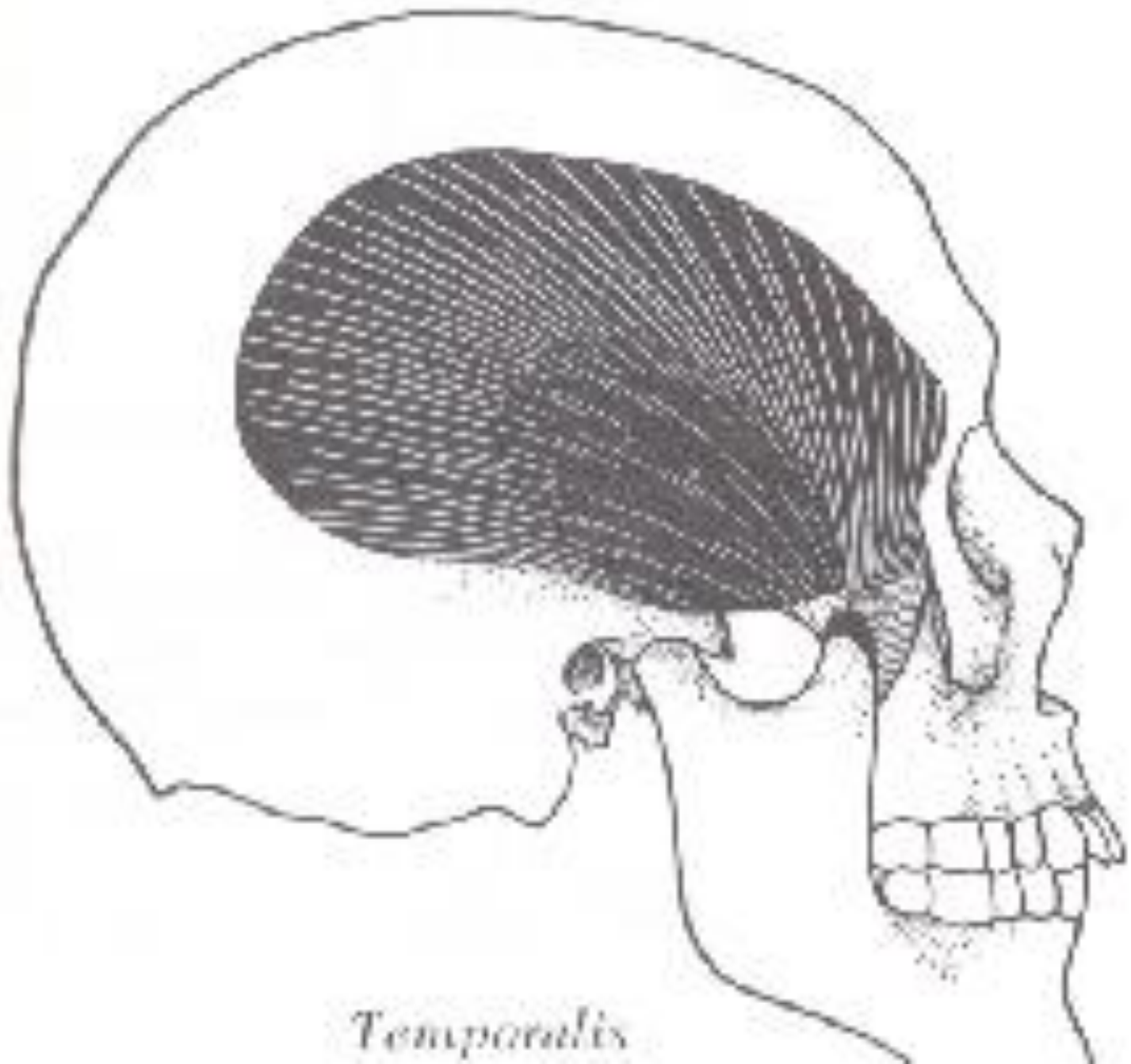
Processus coronoideus

Ağı kapatır

Tek taraflı kendi tarafına çeker

Arka lifleri

Mandibulaya retraksiyon yaptırır



Temporalis

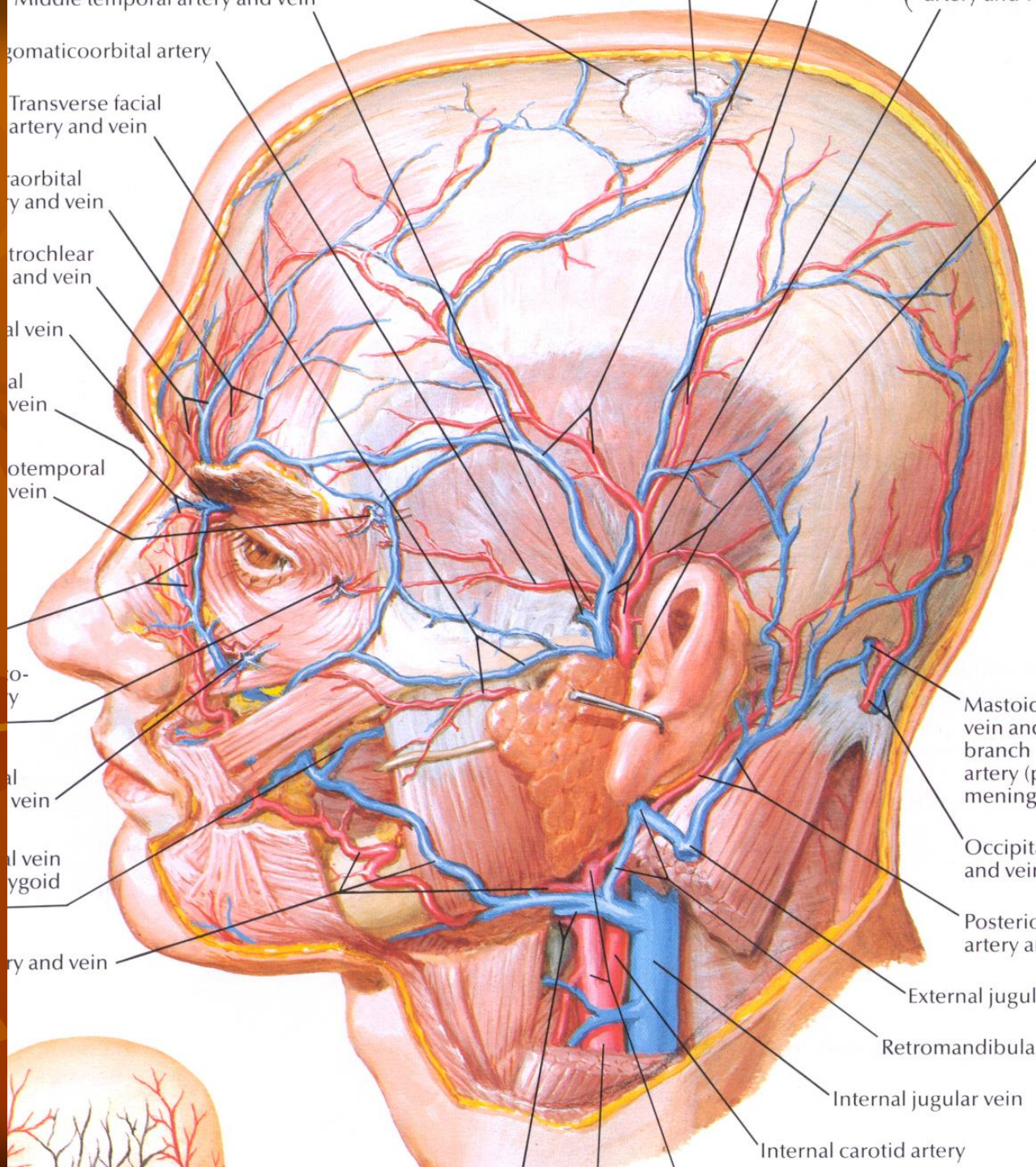
a. temporalis superficialis

v. temporalis superficialis

n. auriculotemporalis

a. temporalis profunda

v. temporalis profunda



m. masseter

Yüzeyel Tabaka

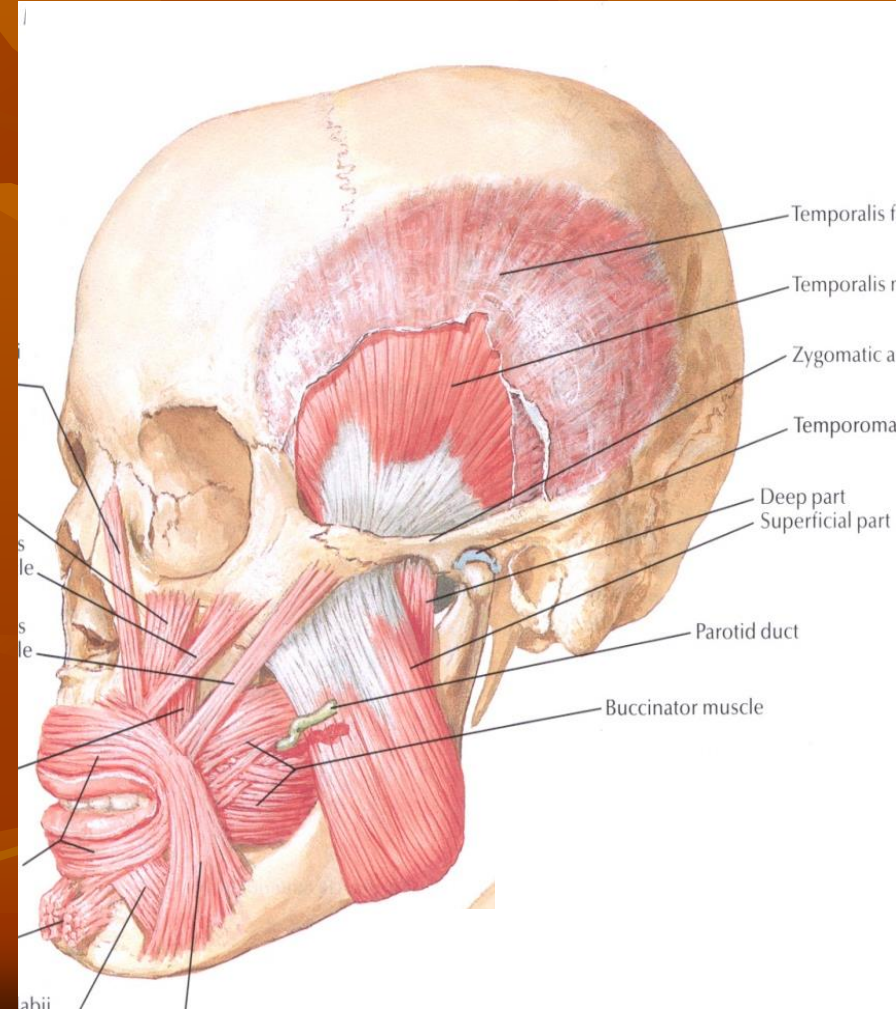
O:
Arcus zygomaticus 2/3 ön kısmı
Processus maxillaris os zygomaticus

İ:
Angulus mandibula
(tuberositas masseterica)

Derin Tabaka

O:
Arcus zygomaticus arka ve iç kısmı

İ:
Ramus Mandibula
Processus coronoideus



m. masseter

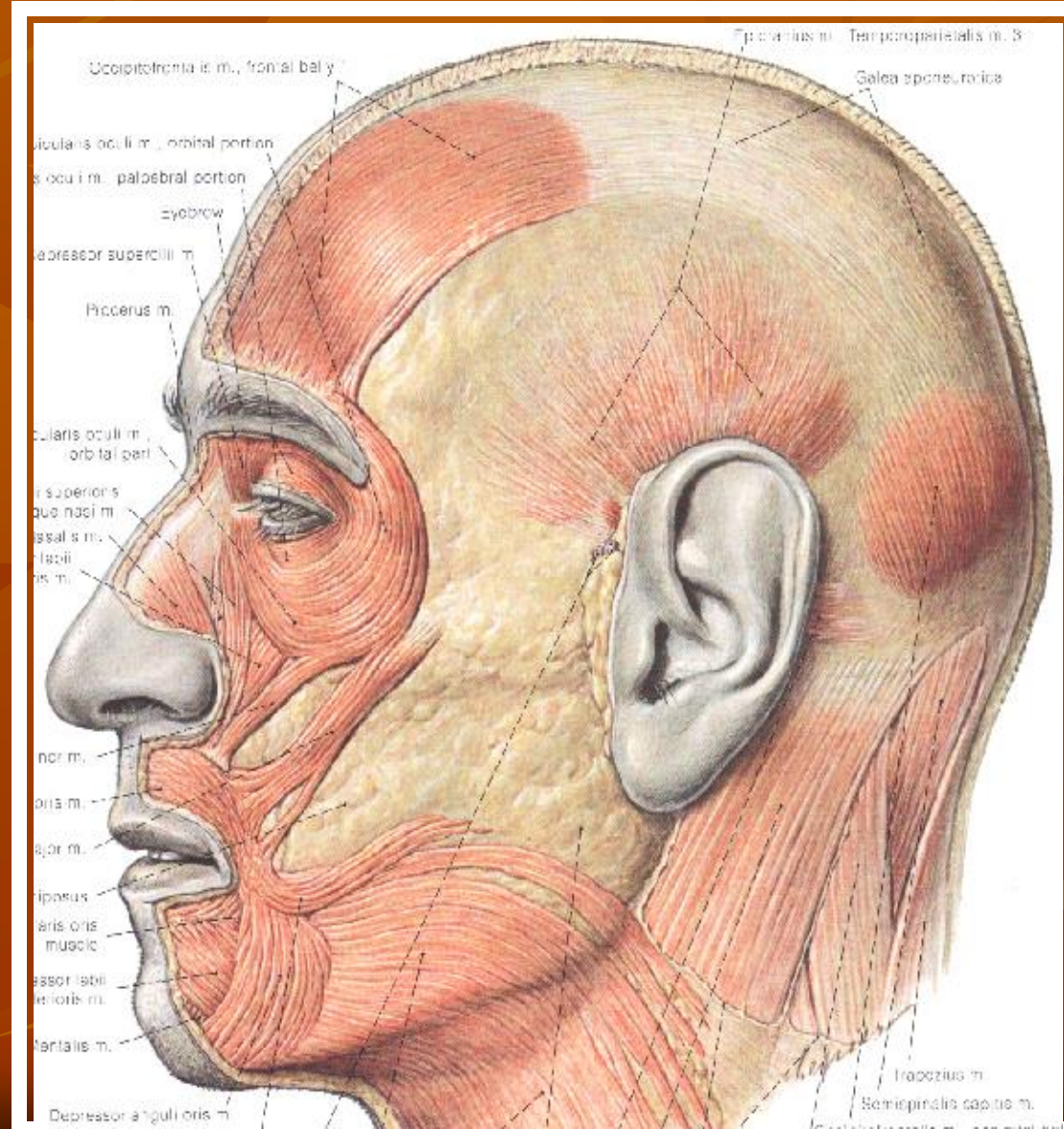
■ yüzeyeli

deri,

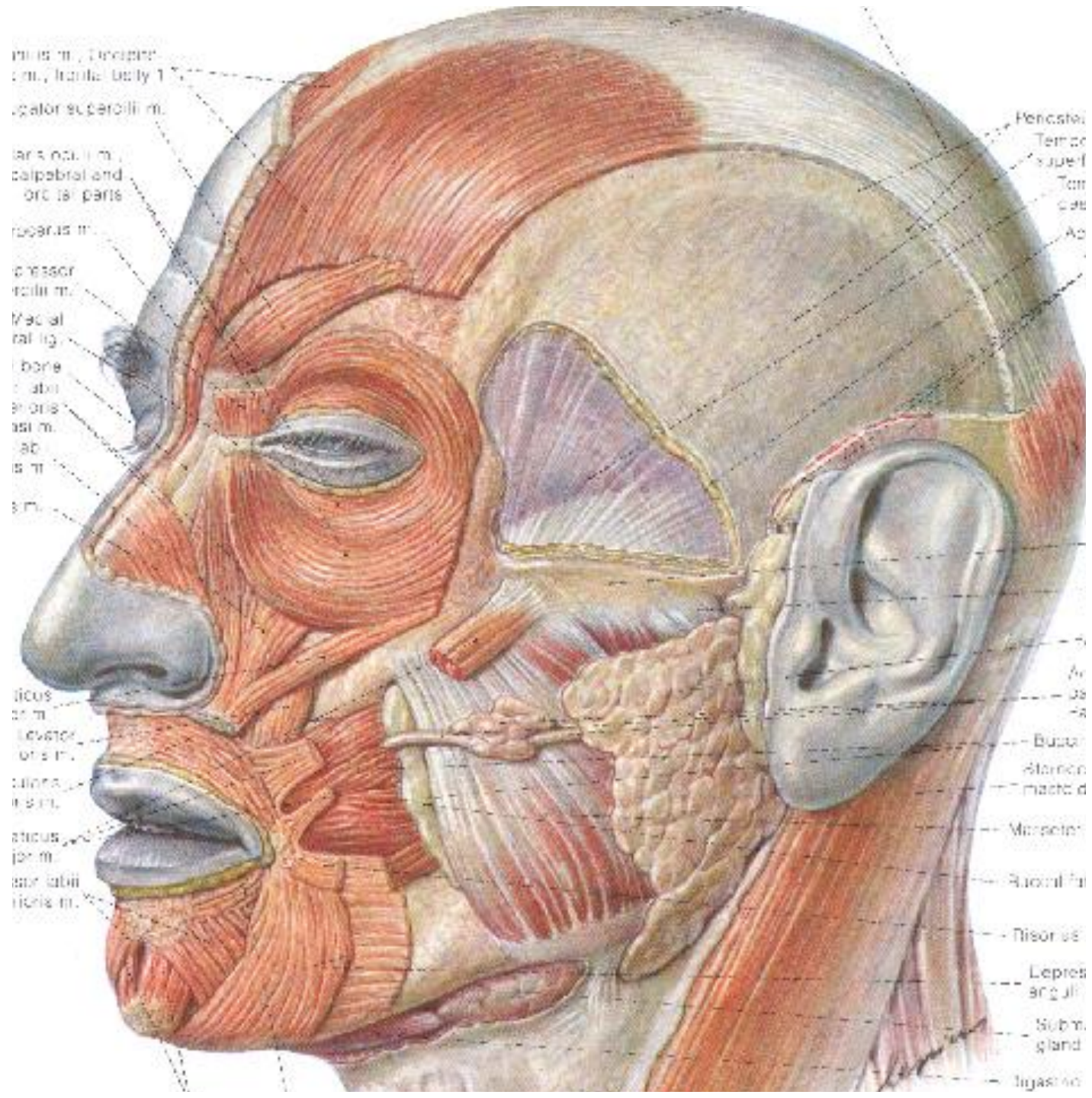
m. Platysma

m. Risorius

m. Zygomaticus major

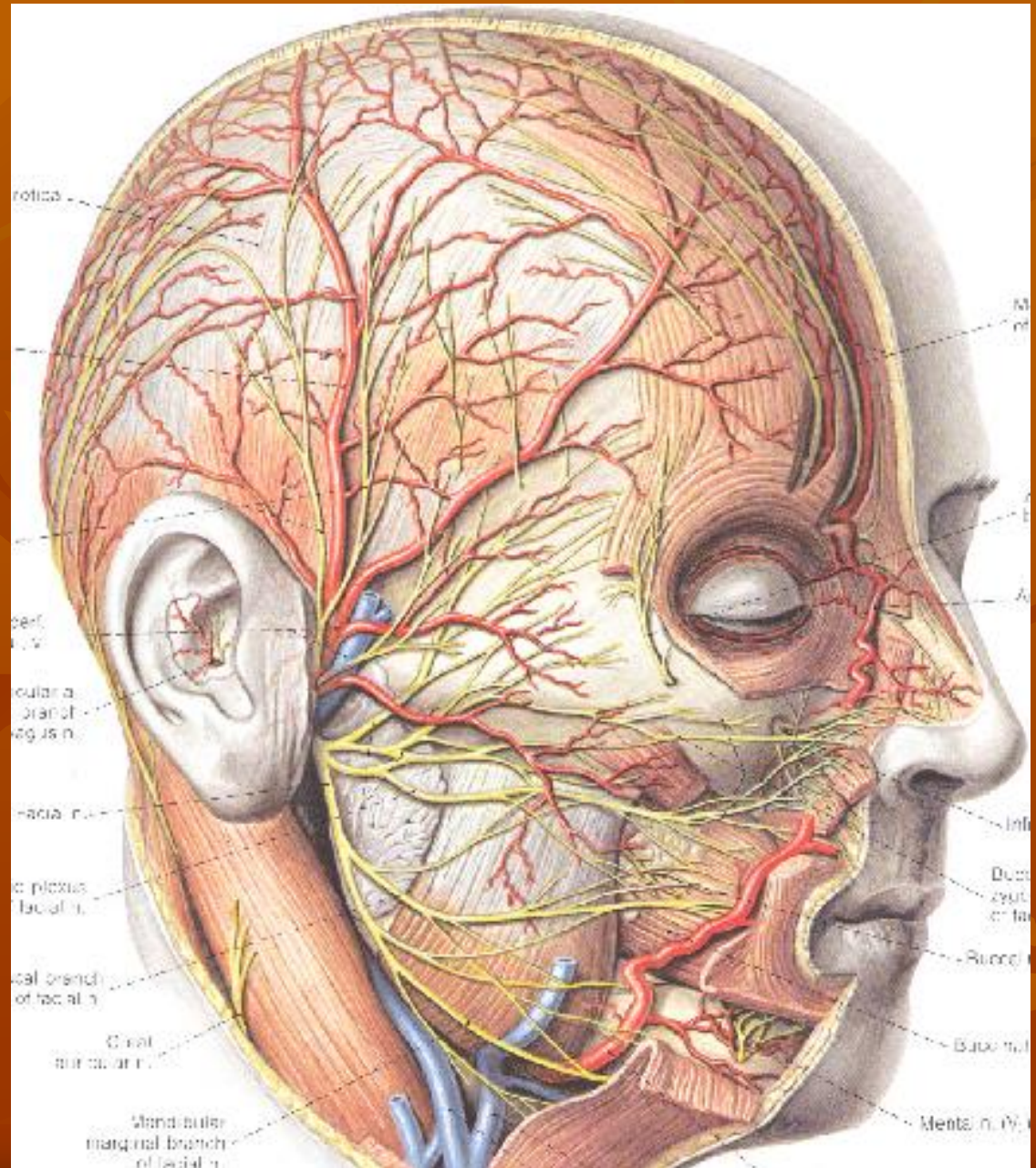


Parotis bezi ve kanalı



N.Facialis

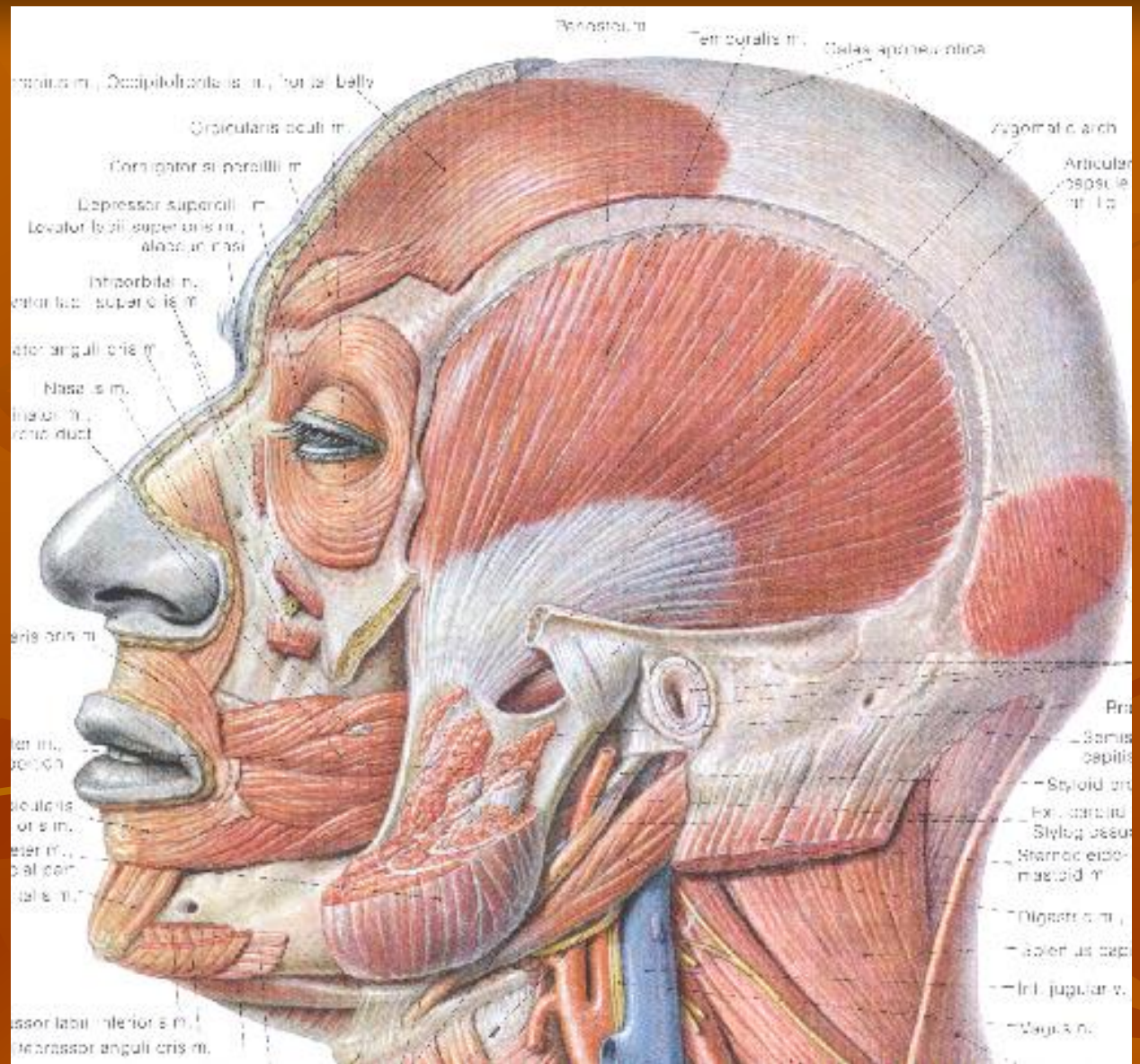
A.V.Transversa faciei



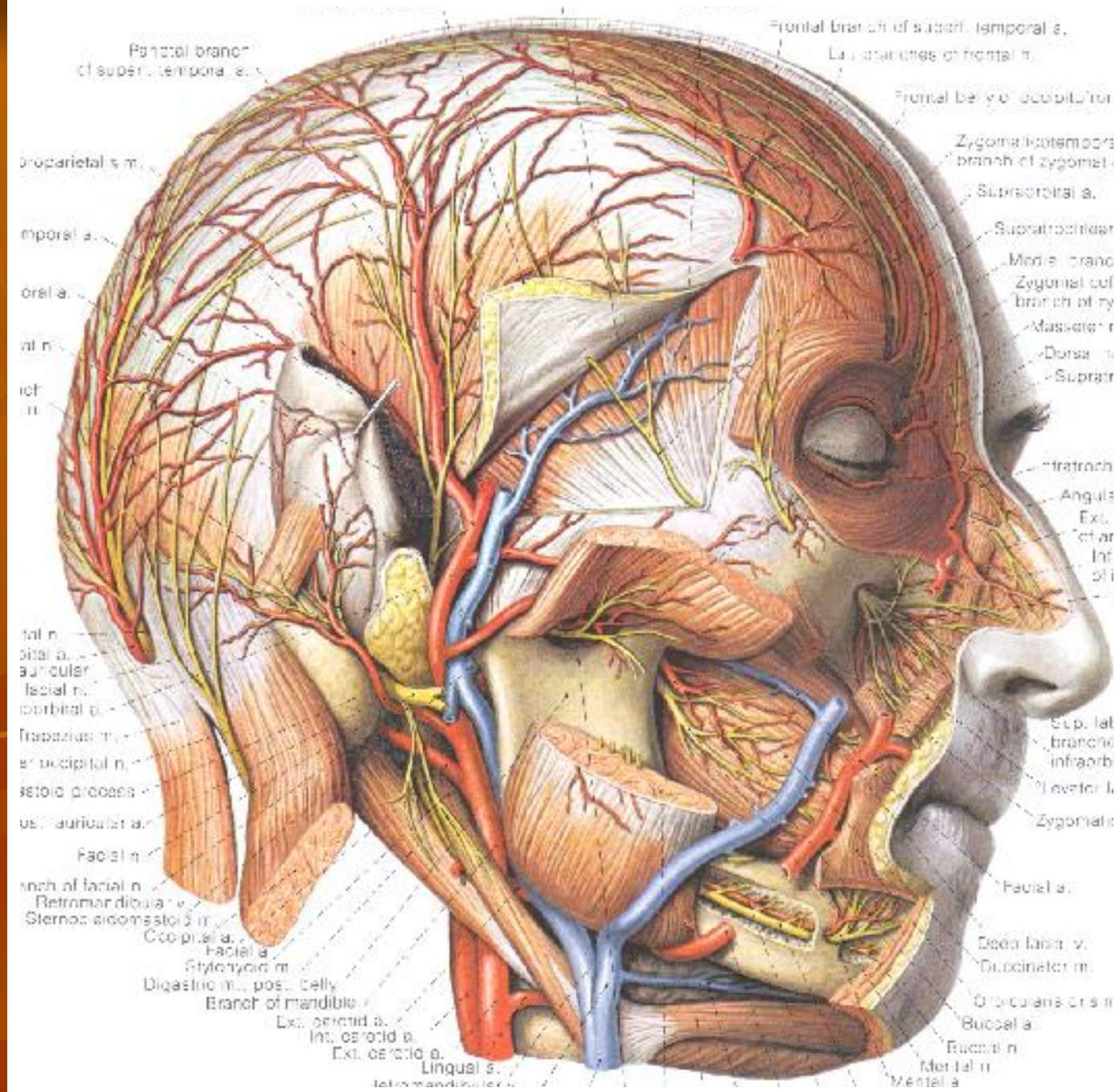
•Derininde

m.temporalis

Ramus mandibula

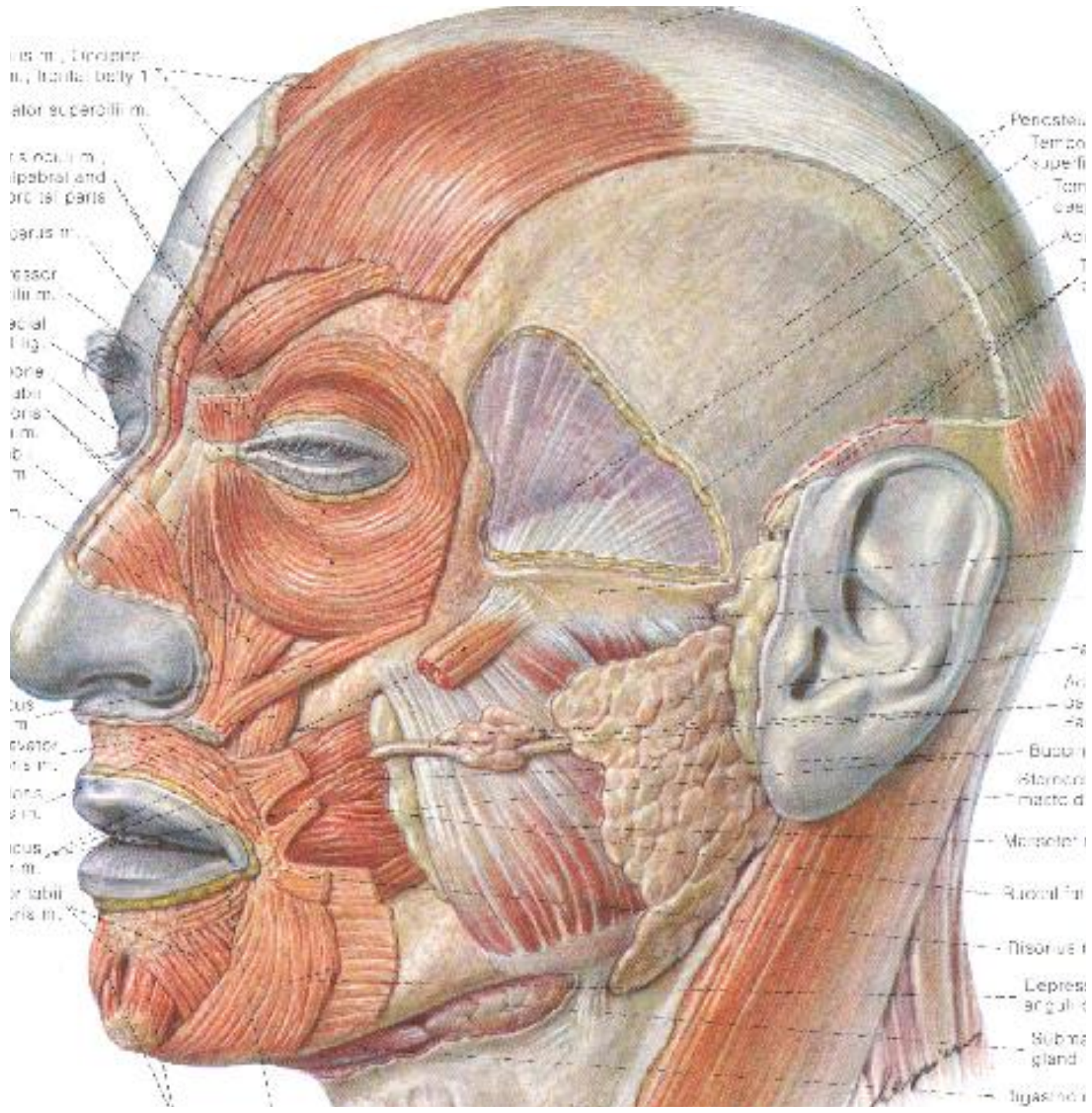


Anterior;
m.buccinator,
Vena facialis



•Posterior

Parotis bezi



Çift taraflı kasılınca:
Mandibulayı yukarıya kaldırır
Ağzı kapatır

Tek taraflı kasılınca:
Mandibulayı kendi tarafına
çeker

Siniri : N. Mandibularis



m. pterygoideus lateralis

■ CAPUT SUPERIOR

O: os sphenoidale

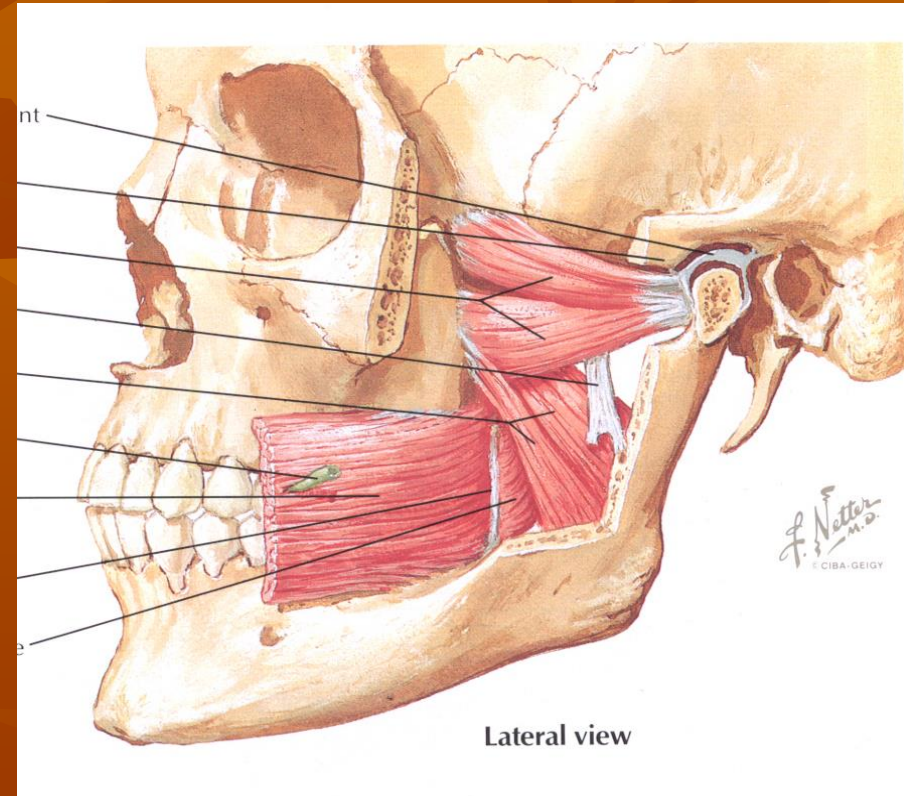
facies infratemporalis ve
crista infratemporalis

İ: discus articularis,
capsula articularis

CAPUT INFERIOR

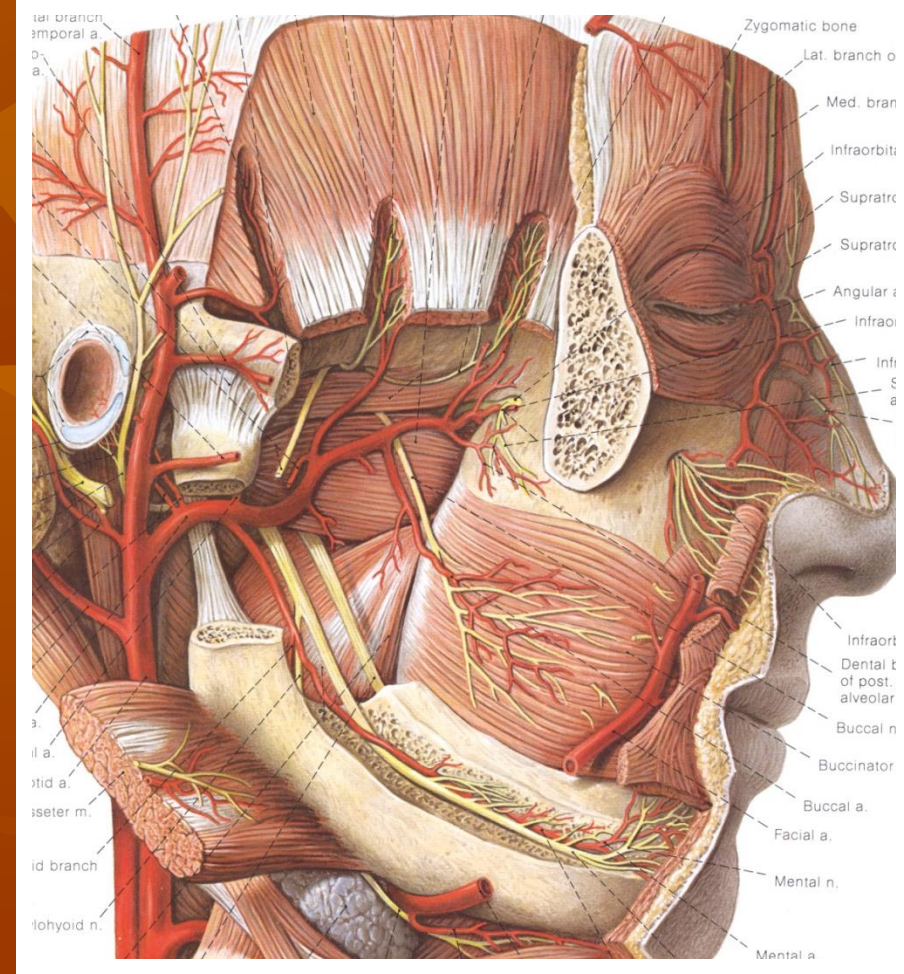
O: processus pterygoideus
lamina lateralis

İ: fovea pterygoidea



■ Yüzeyelinde

- ramus mandibulae,
- a.maxillaris,
- m. temporalis tendonu.
- m.masseter



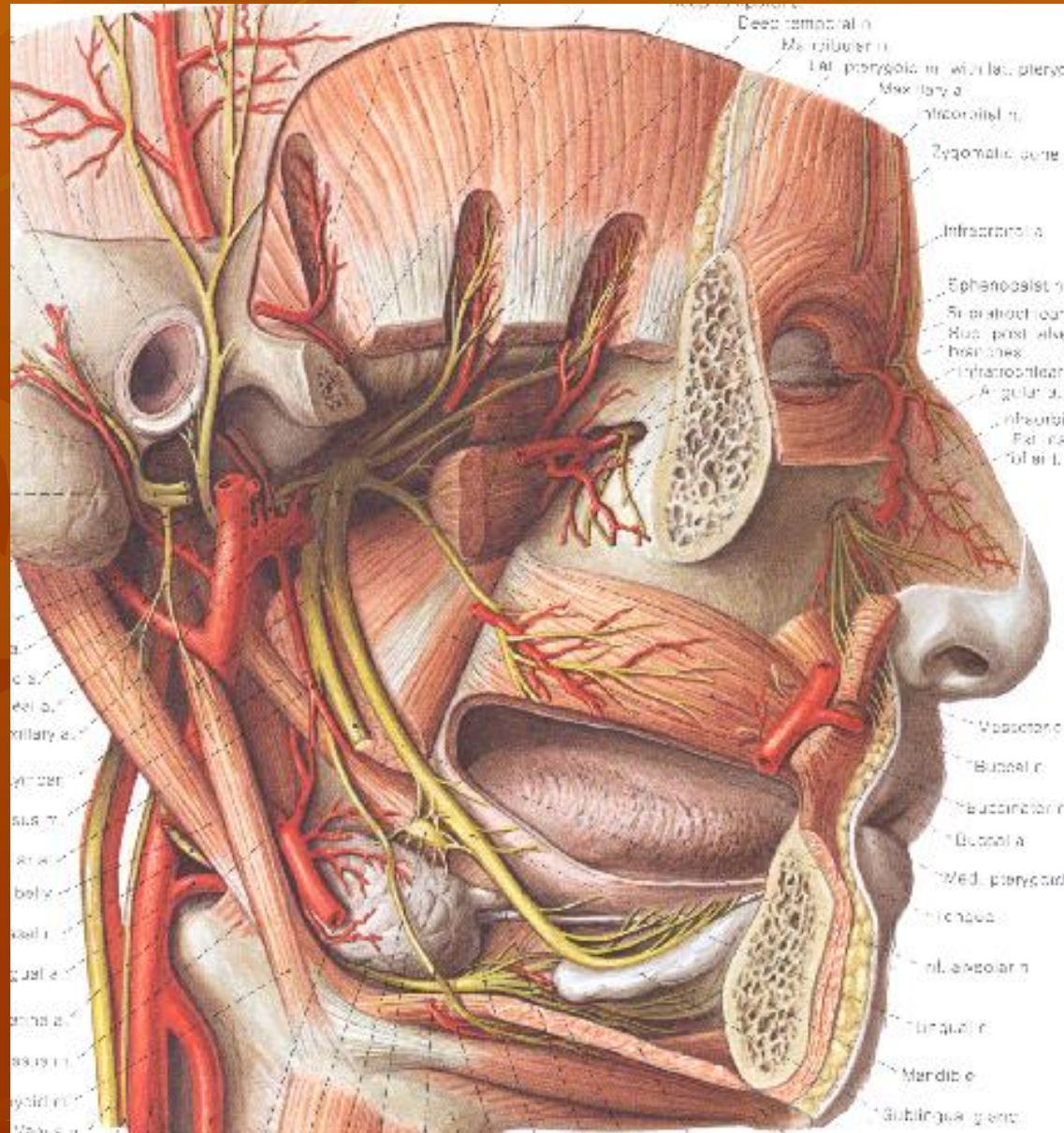
Derininde

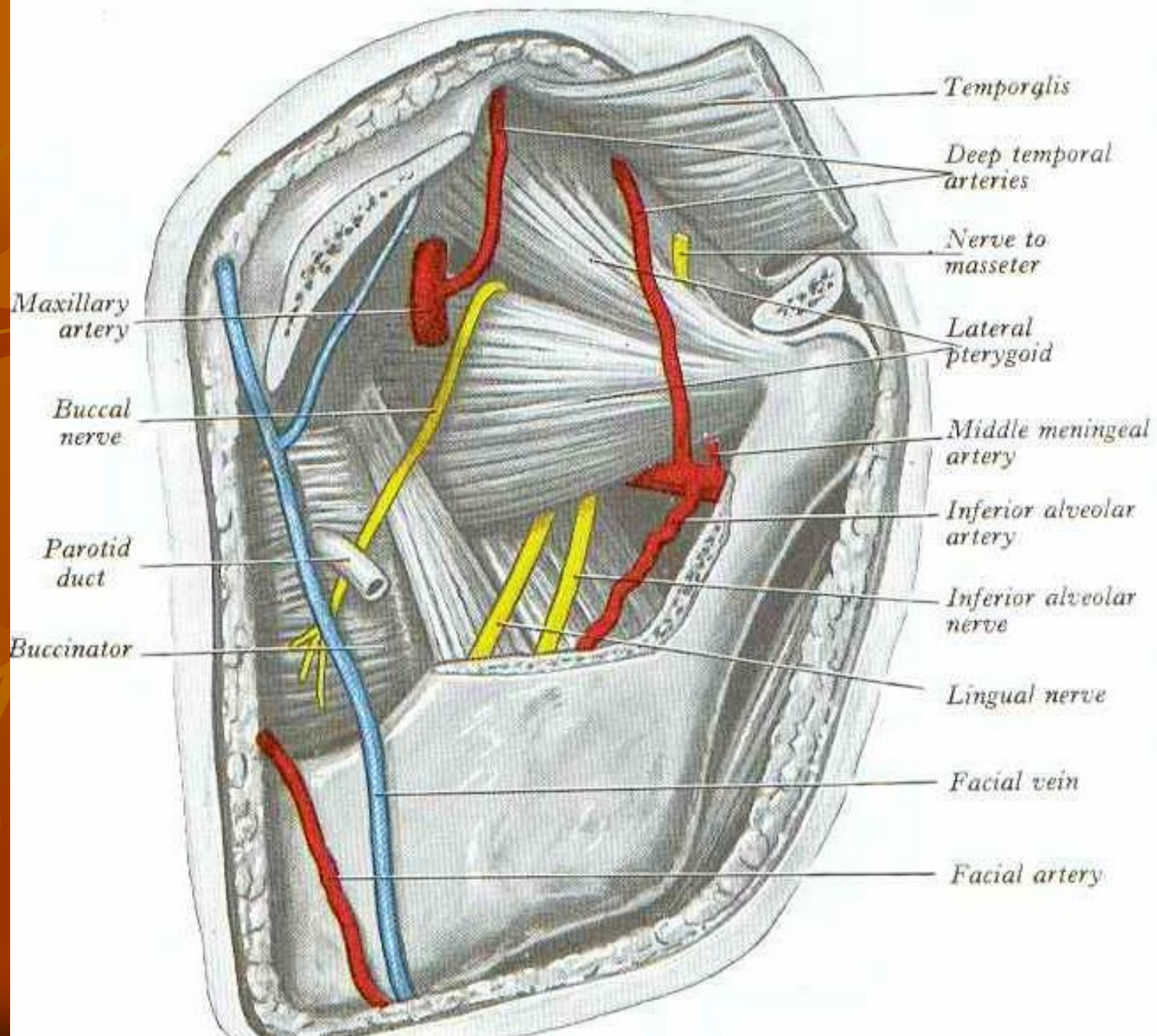
M. pterygoideus

medialis

n.mandibularis

a.meningea media





Maxillary artery

Buccal nerve

Parotid duct

Buccinator

Temporqlis

Deep temporal arteries

Nerve to masseter

Lateral pterygoid

Middle meningeal artery

Inferior alveolar artery

Inferior alveolar nerve

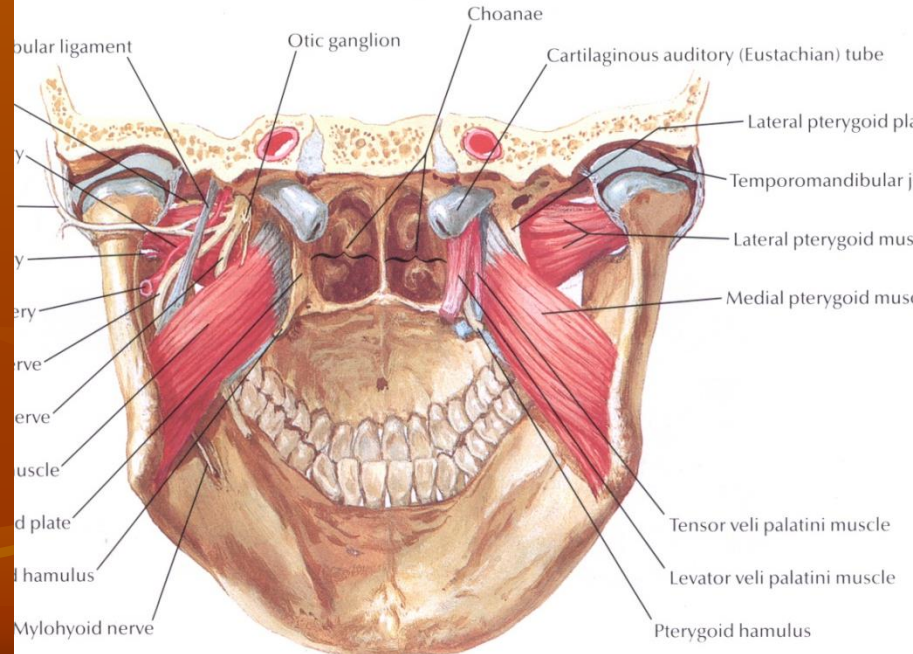
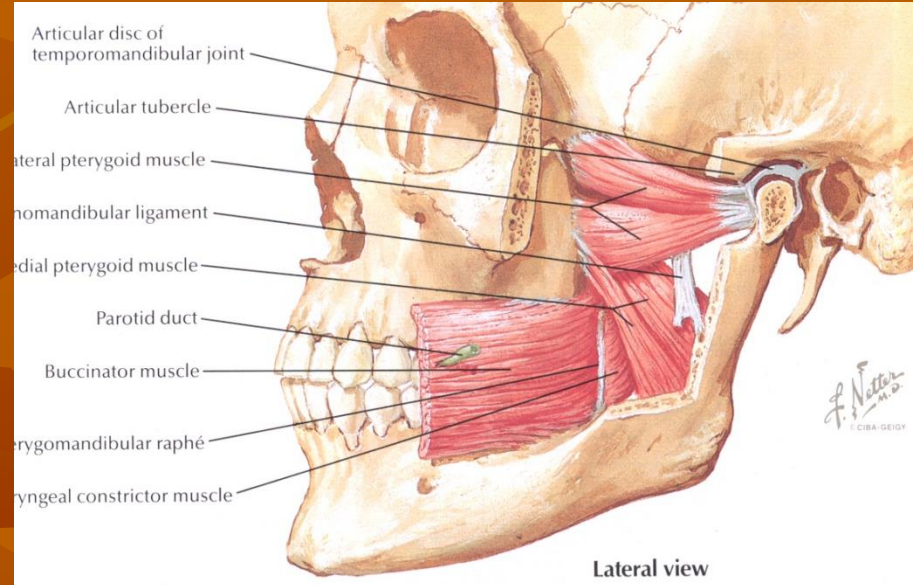
Lingual nerve

Facial vein

Facial artery

Çift taraflı
Mandibulayı öne çeker (protraksiyon)
Mandibulayı aşağıya çeker, ağızı açar

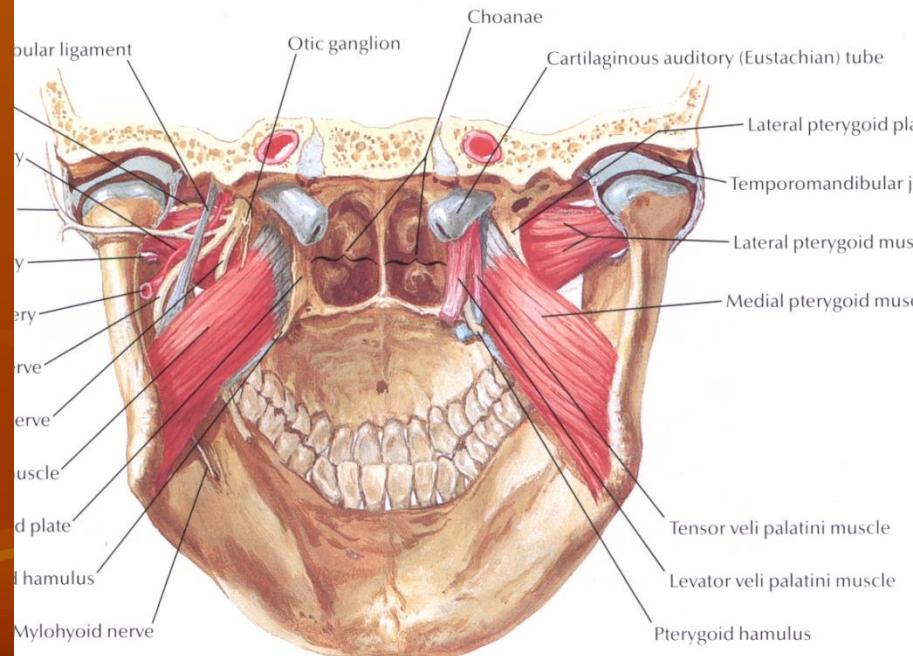
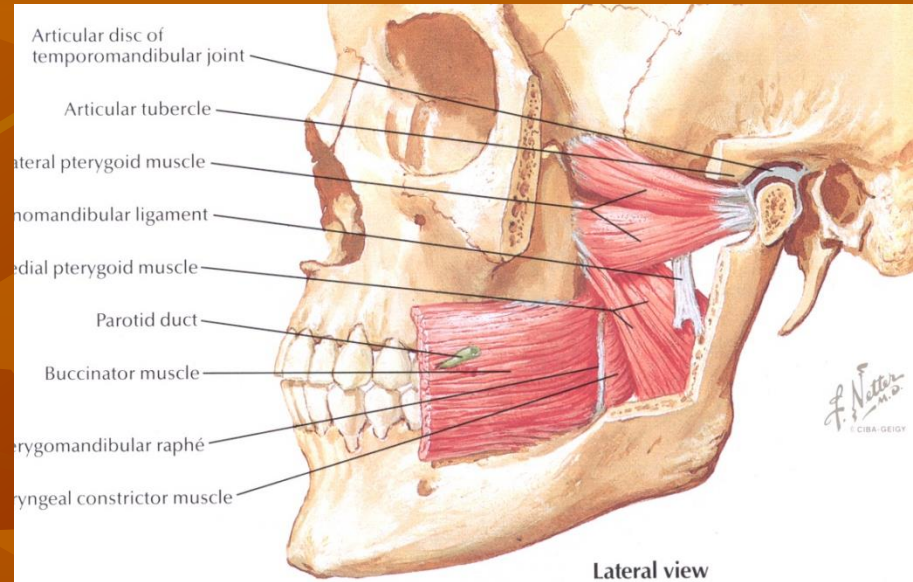
Tek taraflı
Mandibulayı karşı tarafa iter.



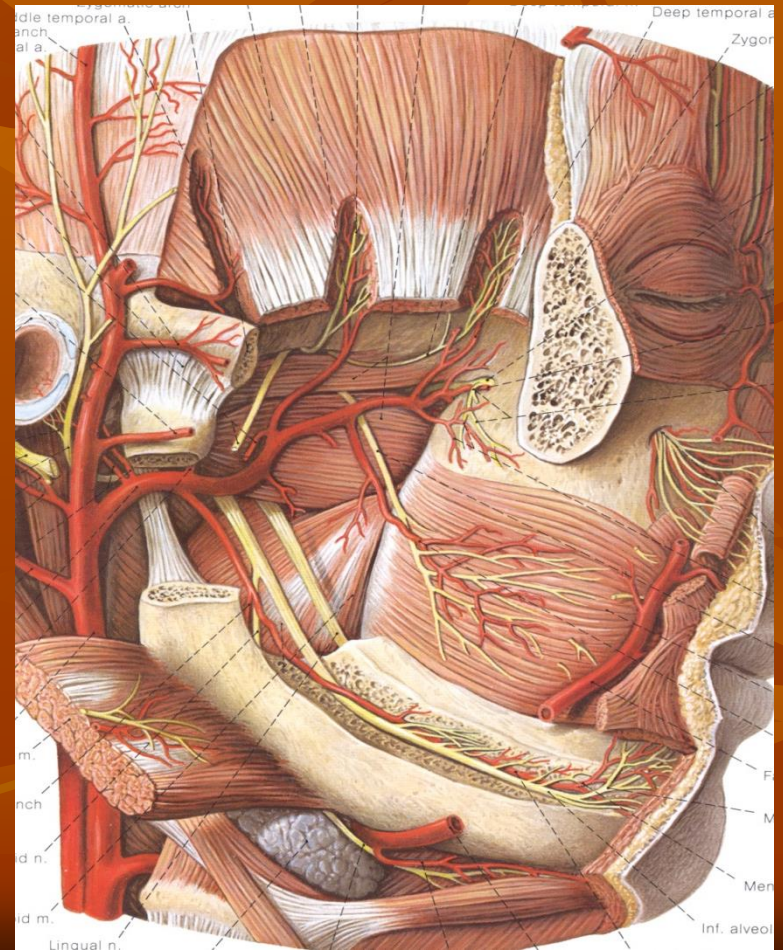
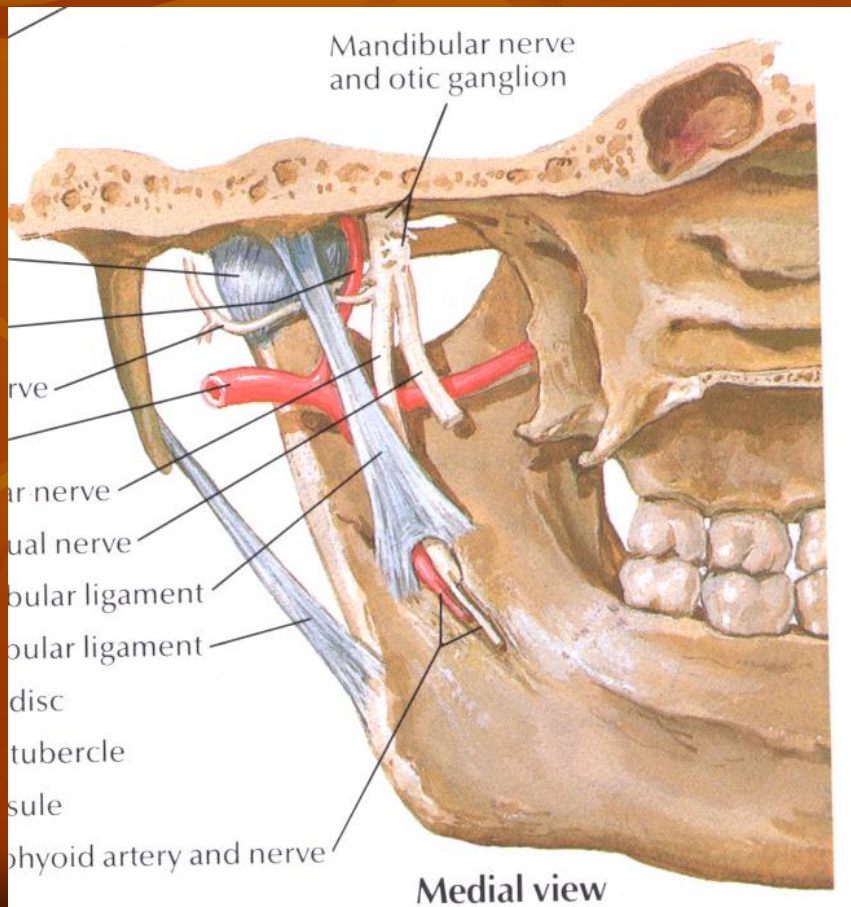
Musculus pterygoideus medialis

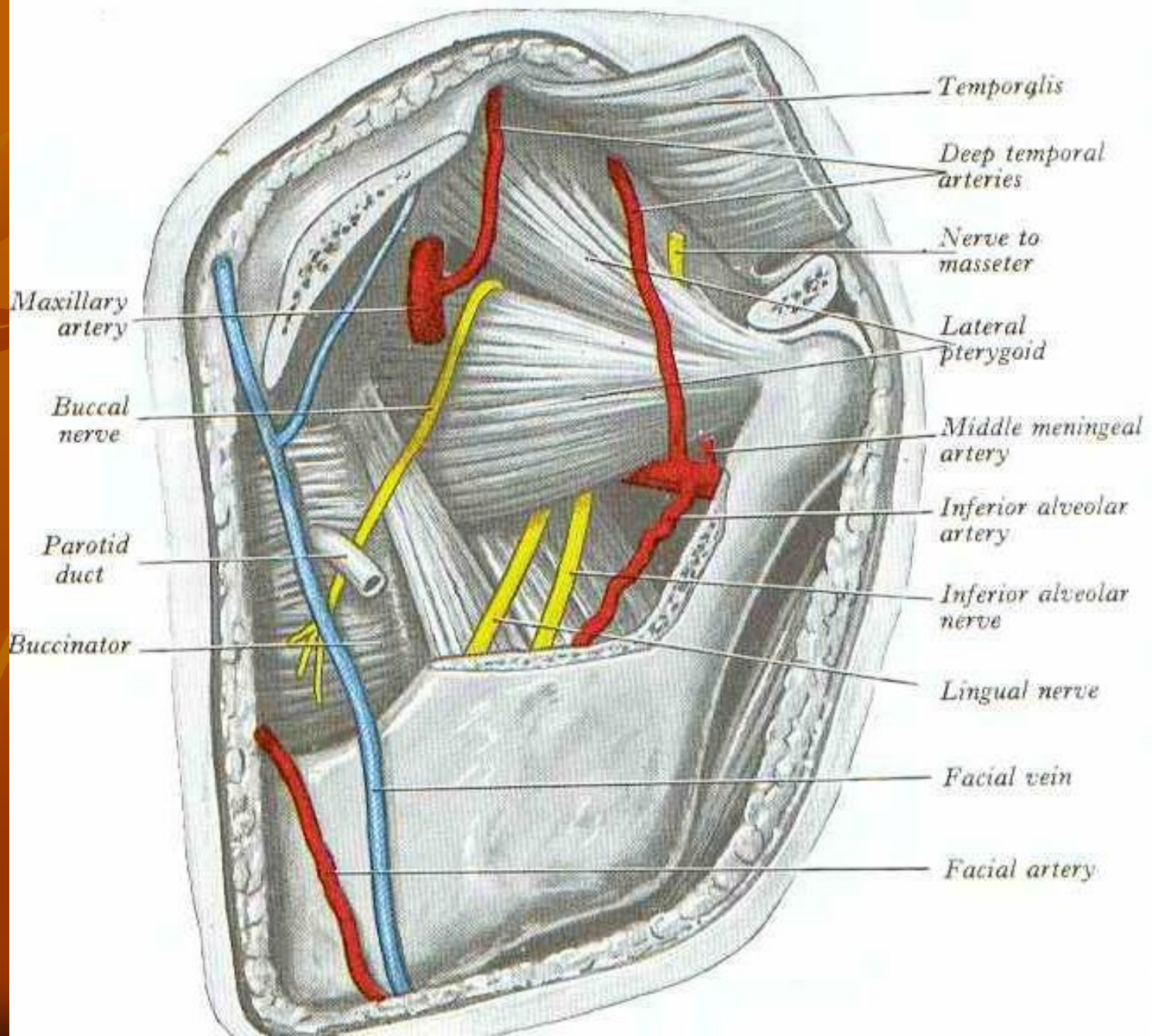
O: processus pterygoideus lamina lateralis, processus pyramidalis et tuber maxilla

I: tuberositas pterygoidea



ligSphenomandibulare nervus Lingualis a.v.n.alveolaris inferior





Çift taraflı
Mandibulayı yukarı kaldırır,
Öne doğru çeker

Tek taraflı
Mandibulayı kendi tarafına çeker

